

Anti-ERp29 antibody ab11420

★★★★★ [4 Abreviews](#) [19 References](#) [画像数 7](#)

製品の概要

製品名	Anti-ERp29 antibody
製品の詳細	Rabbit polyclonal to ERp29
由来種	Rabbit
アプリケーション	適用あり: IP, Flow Cyt, IHC-Fr, WB, ICC/IF
種交差性	交差種: Mouse, Rat, Guinea pig, Hamster, Cow, Dog, Human, Non human primates
免疫原	Recombinant full length protein (His-tag) corresponding to Rat ERp29.
特記事項	<p>The Life Science industry has been in the grips of a reproducibility crisis for a number of years. Abcam is leading the way in addressing this with our range of recombinant monoclonal antibodies and knockout edited cell lines for gold-standard validation. Please check that this product meets your needs before purchasing.</p> <p>If you have any questions, special requirements or concerns, please send us an inquiry and/or contact our Support team ahead of purchase. Recommended alternatives for this product can be found below, along with publications, customer reviews and Q&As</p>

製品の特性

製品の状態	Liquid
保存方法	Shipped at 4°C. Store at +4°C short term (1-2 weeks). Upon delivery aliquot. Store at -20°C or -80°C. Avoid freeze / thaw cycle.
バッファー	Preservative: 0.02% Sodium azide
精製度	Whole antiserum
ポリ/モノ	ポリクローナル
アイソタイプ	IgG

アプリケーション

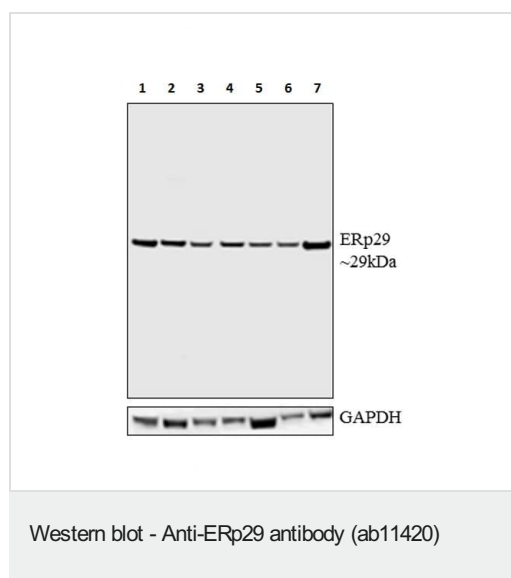
The Abpromise guarantee **Abpromise保証は、** 次のテスト済みアプリケーションにおけるab11420の使用に適用されます
アプリケーションノートには、推奨の開始希釈率がありますが、適切な希釈率につきましてはご検討ください。

アプリケーション	Abreviews	特記事項
IP		Use at an assay dependent concentration.
Flow Cyt		Use at an assay dependent concentration. PubMed: 17451556 ab171870 - Rabbit polyclonal IgG, is suitable for use as an isotype control with this antibody.
IHC-Fr	★★★★★ (1)	Use at an assay dependent concentration. PubMed: 17652758
WB	★★★★★ (3)	1/2500. Detects a band of approximately 29 kDa (predicted molecular weight: 29 kDa). This antibody detects an 29 kDa protein representing ERp29 in rat liver homogenate.
ICC/IF		1/500. Immunofluorescence data demonstrates that ERp29 is localized to the ER of rat thyrocytes using ab11420.

ターゲット情報

機能	Does not seem to be a disulfide isomerase. Plays an important role in the processing of secretory proteins within the endoplasmic reticulum (ER), possibly by participating in the folding of proteins in the ER.
組織特異性	Ubiquitous. Mostly expressed in secretory tissues.
細胞内局在	Endoplasmic reticulum lumen. Melanosome. Identified by mass spectrometry in melanosome fractions from stage I to stage IV.

画像



All lanes : Anti-ERp29 antibody (ab11420) at 1 µg/ml

Lane 1 : MDCK (canine kidney cell line) membrane-enriched extract

Lane 2 : NIH/3T3 (mouse embryo fibroblast cell line) membrane-enriched extract

Lane 3 : HepG2 (human liver hepatocellular carcinoma cell line) membrane-enriched extract

Lane 4 : A549 (human lung carcinoma cell line) membrane-enriched extract

Lane 5 : MCF7 (human breast adenocarcinoma cell line) membrane-enriched extract

Lane 6 : A431 (human epidermoid carcinoma cell line) membrane-enriched extract

Lane 7 : HEK-293 (human epithelial cell line from embryonic

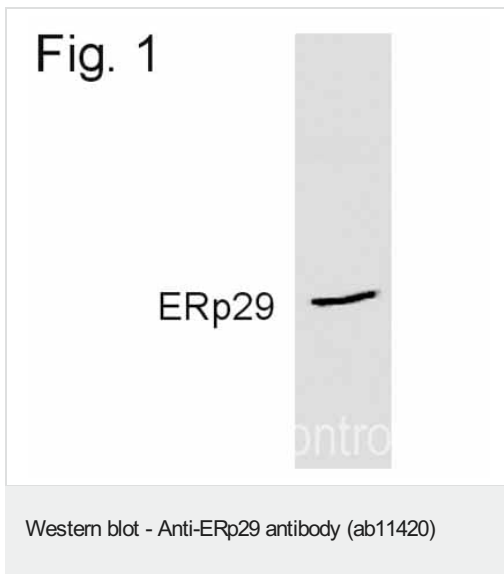
kidney) membrane-enriched extract

Lysates/proteins at 30 µg per lane.

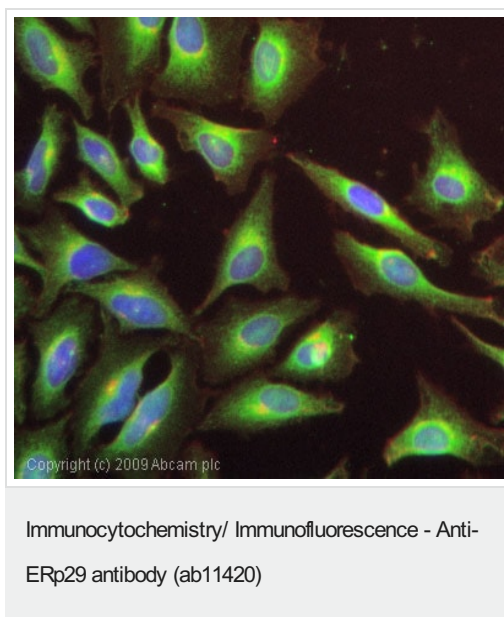
Developed using the ECL technique.

Predicted band size: 29 kDa

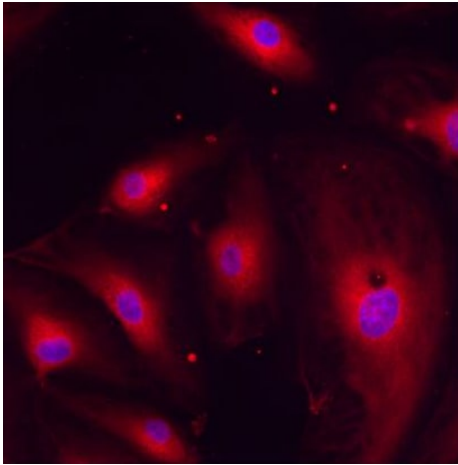
12% SDS-PAGE



Western blot of ERp29 in HEK cell lysate using ab11420.

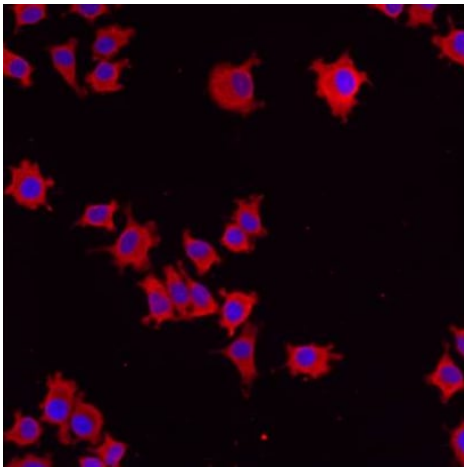


ICC/IF image of ab11420 stained HepG2 cells. The cells were 100% methanol fixed (5 min) and then incubated in 1%BSA / 10% normal goat serum / 0.3M glycine in 0.1% PBS-Tween for 1h to permeabilise the cells and block non-specific protein-protein interactions. The cells were then incubated with the antibody (ab11420, 1/1000 dilution) overnight at +4°C. The secondary antibody (green) was Alexa Fluor® 488 goat anti-rabbit IgG (H+L) used at a 1/1000 dilution for 1h. Alexa Fluor® 594 WGA was used to label plasma membranes (red) at a 1/200 dilution for 1h. DAPI was used to stain the cell nuclei (blue) at a concentration of 1.43µM.



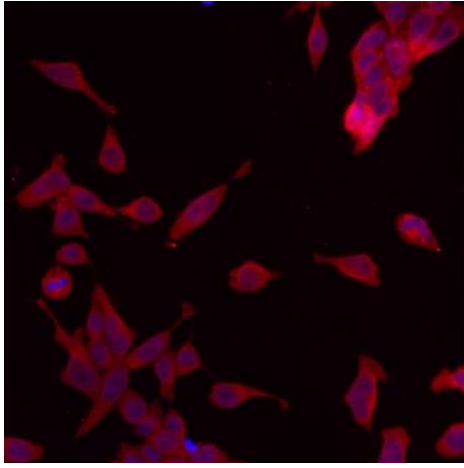
Immunocytochemistry/Immunofluorescence analysis of HMVEC cells labeling ERp29 with ab11420.

Immunocytochemistry/ Immunofluorescence - Anti-ERp29 antibody (ab11420)



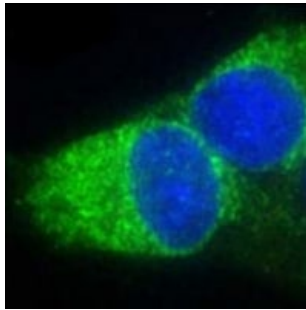
Immunocytochemistry/Immunofluorescence analysis of NS-1 cells labeling ERp29 with ab11420.

Immunocytochemistry/ Immunofluorescence - Anti-ERp29 antibody (ab11420)



Immunocytochemistry/Immunofluorescence analysis of p19 cells labeling ERp29 with ab11420.

Immunocytochemistry/ Immunofluorescence - Anti-ERp29 antibody (ab11420)



Immunocytochemistry/Immunofluorescence analysis of rat thyrocytes labeling ERp29 with ab11420.

Immunocytochemistry/ Immunofluorescence - Anti-ERp29 antibody (ab11420)

Please note: All products are "FOR RESEARCH USE ONLY. NOT FOR USE IN DIAGNOSTIC PROCEDURES"

Our Abpromise to you: Quality guaranteed and expert technical support

- Replacement or refund for products not performing as stated on the datasheet
- Valid for 12 months from date of delivery
- Response to your inquiry within 24 hours
- We provide support in Chinese, English, French, German, Japanese and Spanish
- Extensive multi-media technical resources to help you
- We investigate all quality concerns to ensure our products perform to the highest standards

If the product does not perform as described on this datasheet, we will offer a refund or replacement. For full details of the Abpromise, please visit <https://www.abcam.co.jp/abpromise> or contact our technical team.

Terms and conditions

- Guarantee only valid for products bought direct from Abcam or one of our authorized distributors