


Anti-ERK5 (phospho T219 + Y221) antibody ab5686

★★★★☆ [2 Abreviews](#) [6 References](#) [画像数 1](#)

製品の概要

| | |
|--------------|---|
| 製品名 | Anti-ERK5 (phospho T219 + Y221) antibody |
| 製品の詳細 | Rabbit polyclonal to ERK5 (phospho T219 + Y221) |
| 由来種 | Rabbit |
| 特異性 | Some cross-reactivity is observed with endogenous ERK1 and 2 (44 and 42 kDa, respectively) due to the high levels of expression and activation of this protein typically observed with most cell types. |
| アプリケーション | 適用あり: WB |
| 種交差性 | 交差種: Human 交差が予測される動物種: Mouse  |
| 免疫原 | Synthetic peptide corresponding to ERK5 (phospho T219 + Y221). |
| ポジティブ・コントロール | WB: HEK293 cells transiently co-transfected with plasmids expressing ERK5 kinase domain (ERK5kin) and constitutively activated MEK5 (MEK5D-D). |
| 特記事項 | <p>The Life Science industry has been in the grips of a reproducibility crisis for a number of years. Abcam is leading the way in addressing this with our range of recombinant monoclonal antibodies and knockout edited cell lines for gold-standard validation. Please check that this product meets your needs before purchasing.</p> <p>If you have any questions, special requirements or concerns, please send us an inquiry and/or contact our Support team ahead of purchase. Recommended alternatives for this product can be found below, along with publications, customer reviews and Q&As</p> |

製品の特性

| | |
|-----------|--|
| 製品の状態 | Liquid |
| 保存方法 | Shipped at 4°C. Upon delivery aliquot and store at -20°C or -80°C. Avoid repeated freeze / thaw cycles. |
| バッファー | pH: 7.30 Preservative: 0.05% Sodium azide Constituents: PBS, 50% Glycerol (glycerin, glycerine), 0.1% BSA |
| 精製度 | Immunogen affinity purified |
| 特記事項 (精製) | The antibody has been negatively preadsorbed using a non-phosphopeptide corresponding to the site of phosphorylation to remove antibody that is reactive with non-phosphorylated ERK5. The |

final product is generated by affinity chromatography using an ERK5-derived peptide that is phosphorylated at threonine 219 and tyrosine 221.

ポリ/モノ

ポリクローナル

アイソタイプ

IgG

アプリケーション

The Abpromise guarantee

Abpromise保証は、次のテスト済みアプリケーションにおけるab5686の使用に適用されます

アプリケーションノートには、推奨の開始希釈率がありますが、適切な希釈率につきましてはご検討ください。

| アプリケーション | Abreviews | 特記事項 |
|----------|-----------|---|
| WB | ★☆☆☆☆ (1) | 1/1000. Predicted molecular weight: 88 kDa. Due to the low abundance and low levels of activation of endogenous ERK5, over-expression or immunoprecipitation may be required. |

ターゲット情報

機能

Plays a role in various cellular processes such as proliferation, differentiation and cell survival. The upstream activator of MAPK7 is the MAPK kinase MAP2K5. Upon activation, it translocates to the nucleus and phosphorylates various downstream targets including MEF2C. EGF activates MAPK7 through a Ras-independent and MAP2K5-dependent pathway. May have a role in muscle cell differentiation. May be important for endothelial function and maintenance of blood vessel integrity. MAP2K5 and MAPK7 interact specifically with one another and not with MEK1/ERK1 or MEK2/ERK2 pathways.

組織特異性

Expressed in many adult tissues. Abundant in heart, placenta, lung, kidney and skeletal muscle. Not detectable in liver.

配列類似性

Belongs to the protein kinase superfamily. CMGC Ser/Thr protein kinase family. MAP kinase subfamily.
Contains 1 protein kinase domain.

ドメイン

The second proline-rich region may interact with actin targeting the kinase to a specific location in the cell.
The TXY motif contains the threonine and tyrosine residues whose phosphorylation activates the MAP kinases.

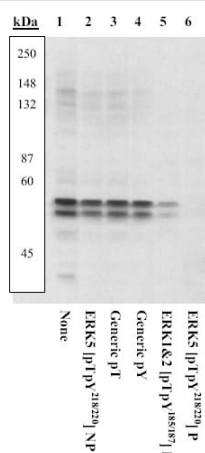
翻訳後修飾

Dually phosphorylated on Thr-219 and Tyr-221, which activates the enzyme (By similarity). Autophosphorylated in vitro on threonine and tyrosine residues when the C-terminal part of the kinase, which could have a regulatory role, is absent.

細胞内局在

Cytoplasm. Nucleus. Translocates to the nucleus upon activation.

画像



Western blot - Anti-ERK5 (phospho T219 + Y221)
antibody (ab5686)

Peptide Competition:

Extracts prepared from HEK293 cells transiently transfected with plasmids expressing ERK5 kinase domain (ERK5kin) and constitutively activated MEK5D-D were resolved by SDS-PAGE on a 10% polyacrylamide gel and transferred to PVDF. Membranes were blocked with a 5% BSA TBST buffer overnight at 4°C, then were incubated with the ab5686 antibody for two hours at room temperature in a 3% BSA TBST buffer, following prior incubation with: no peptide (1), the non-phosphopeptide corresponding to the immunogen (2), a generic phosphothreonine-containing peptide (3), a generic phosphotyrosine-containing peptide (4), the phosphopeptide derived from the corresponding region of ERK1&2 (5), or, the phosphopeptide immunogen (6). After washing, membranes were incubated with goat F(ab')₂ anti-rabbit IgG alkaline phosphatase conjugate and bands were detected using the Tropix WesternStar™ detection method. The data show that while there is some cross-reactivity with ERK1&

Please note: All products are "FOR RESEARCH USE ONLY. NOT FOR USE IN DIAGNOSTIC PROCEDURES"

Our Abpromise to you: Quality guaranteed and expert technical support

- Replacement or refund for products not performing as stated on the datasheet
- Valid for 12 months from date of delivery
- Response to your inquiry within 24 hours
- We provide support in Chinese, English, French, German, Japanese and Spanish
- Extensive multi-media technical resources to help you
- We investigate all quality concerns to ensure our products perform to the highest standards

If the product does not perform as described on this datasheet, we will offer a refund or replacement. For full details of the Abpromise, please visit <https://www.abcam.co.jp/abpromise> or contact our technical team.

Terms and conditions

- Guarantee only valid for products bought direct from Abcam or one of our authorized distributors