





Anti-ERGIC1 antibody ab121574

画像数 6

製品の概要

| | |
|--------------|---|
| 製品名 | Anti-ERGIC1 antibody |
| 製品の詳細 | Rabbit polyclonal to ERGIC1 |
| 由来種 | Rabbit |
| アプリケーション | 適用あり: ICC/IF, IHC-P, WB |
| 種交差性 | 交差種: Human |
| 免疫原 | antigen sequence: VVNELYVDDP DKDSGGKIDV SLNISLPNLH CELVGLDIQD EMGRHEVGHI DNSMKIPLNN GAGCRFEGQF SINK, corresponding to internal sequence amino acids 52-125 of Human ERGIC1 <div>  Run BLAST with   Run BLAST with  </div> |
| ポジティブ・コントロール | WB: Human RT-4, U-251 MG and Human tonsil cell lysates IHC: Human liver, prostate, cerebral cortex and testis tissue ICC/IF: Human cell line U-251 |
| 特記事項 | <p>The Life Science industry has been in the grips of a reproducibility crisis for a number of years. Abcam is leading the way in addressing this with our range of recombinant monoclonal antibodies and knockout edited cell lines for gold-standard validation. Please check that this product meets your needs before purchasing.</p> <p>If you have any questions, special requirements or concerns, please send us an inquiry and/or contact our Support team ahead of purchase. Recommended alternatives for this product can be found below, along with publications, customer reviews and Q&As</p> |

製品の特性

| | |
|--------|---|
| 製品の状態 | Liquid |
| 保存方法 | Shipped at 4°C. Upon delivery aliquot and store at -20°C. Avoid repeated freeze / thaw cycles. |
| バッファー | pH: 7.20 Preservative: 0.02% Sodium azide Constituents: 59% PBS, 40% Glycerol (glycerin, glycerine) |
| 精製度 | Immunogen affinity purified |
| ポリ/モノ | ポリクローナル |
| アイソタイプ | IgG |

アプリケーション

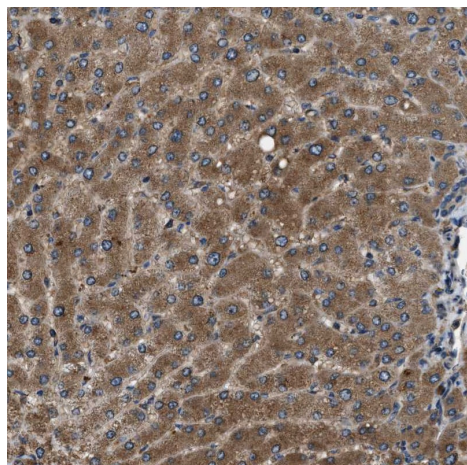
The Abpromise guarantee Abpromise保証は、次のテスト済みアプリケーションにおけるab121574の使用に適用されます
アプリケーションノートには、推奨の開始希釈率がありますが、適切な希釈率につきましてはご確認ください。

| アプリケーション | Abreviews | 特記事項 |
|----------|-----------|---|
| ICC/IF | | Use a concentration of 0.25 - 2 µg/ml. |
| IHC-P | | 1/20 - 1/50. Perform heat mediated antigen retrieval with citrate buffer pH 6 before commencing with IHC staining protocol. Use buffer at pH 6 for antigen retrieval. |
| WB | | Use a concentration of 0.04 - 0.4 µg/ml. |

ターゲット情報

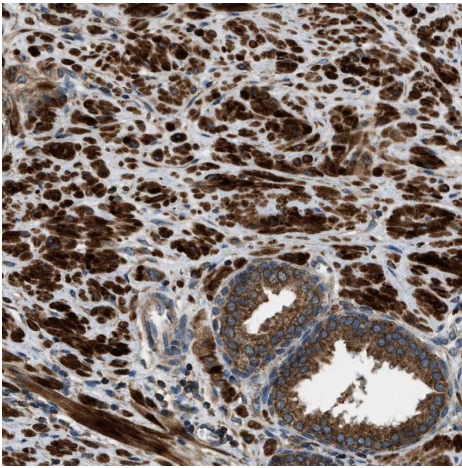
| | |
|-------|--|
| 機能 | Possible role in transport between endoplasmic reticulum and Golgi. |
| 配列類似性 | Belongs to the ERGIC family. |
| 翻訳後修飾 | N-glycosylated. |
| 細胞内局在 | Endoplasmic reticulum membrane. Endoplasmic reticulum-Golgi intermediate compartment membrane. Golgi apparatus membrane. Cycles between the endoplasmic reticulum and the Golgi. |

画像



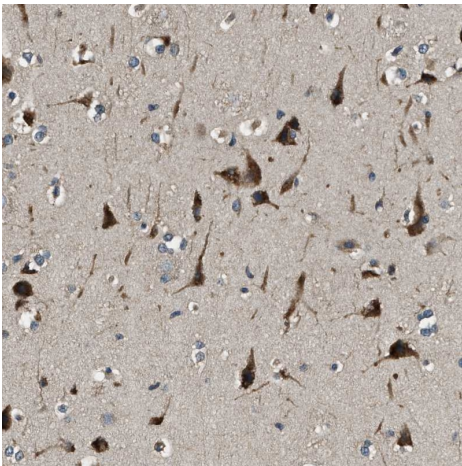
ab121574, at a 1/25 dilution, staining ERGIC1 in paraffin-embedded Human liver tissue by immunohistochemistry.

Immunohistochemistry (Formalin/PFA-fixed paraffin-embedded sections) - Anti-ERGIC1 antibody (ab121574)



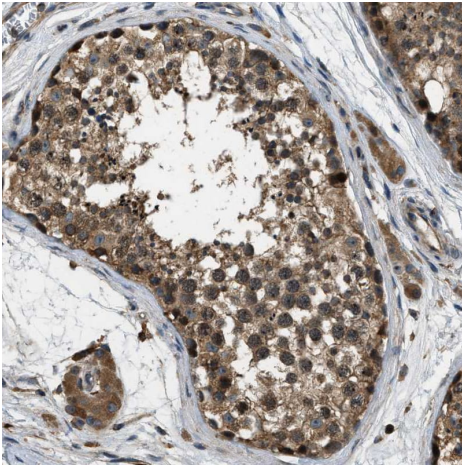
Immunohistochemistry (Formalin/PFA-fixed paraffin-embedded sections) - Anti-ERGIC1 antibody (ab121574)

ab121574, at a 1/25 dilution, staining ERGIC1 in paraffin-embedded Human prostate tissue by immunohistochemistry.



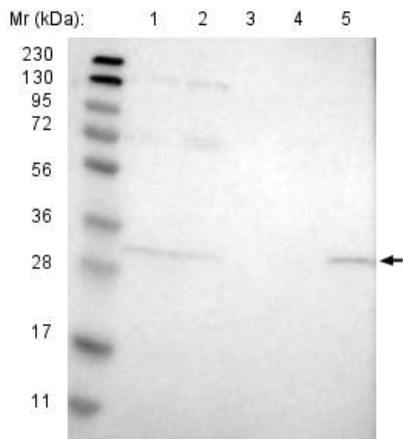
Immunohistochemistry (Formalin/PFA-fixed paraffin-embedded sections) - Anti-ERGIC1 antibody (ab121574)

ab121574, at a 1/25 dilution, staining ERGIC1 in paraffin-embedded Human cerebral cortex tissue by immunohistochemistry.



Immunohistochemistry (Formalin/PFA-fixed paraffin-embedded sections) - Anti-ERGIC1 antibody (ab121574)

ab121574, at a 1/25 dilution, staining ERGIC1 in paraffin-embedded Human testis tissue by immunohistochemistry.



Western blot - Anti-ERGIC1 antibody (ab121574)

All lanes : Anti-ERGIC1 antibody (ab121574) at 1/250 dilution

Lane 1 : RT-4 cell lysate

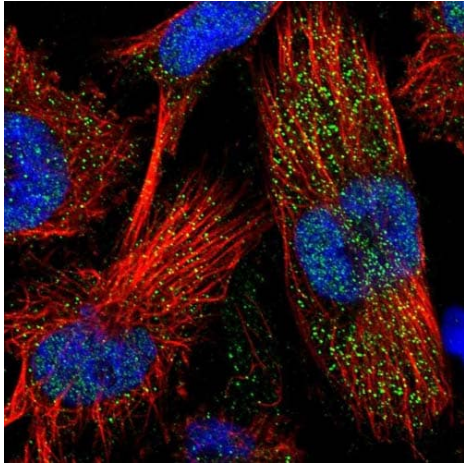
Lane 2 : U-251 MG cell lysate

Lane 3 : Human plasma

Lane 4 : Human liver lysate

Lane 5 : Human tonsil lysate

Developed using the ECL technique.



Immunocytochemistry/ Immunofluorescence - Anti-ERGIC1 antibody (ab121574)

Immunofluorescent staining of Human cell line U-251MG shows positivity in nucleus but not nucleoli and vesicles. Recommended concentration of ab121574 1-4 µg/ml. Cells treated with PFA/Triton X-100.

Please note: All products are "FOR RESEARCH USE ONLY. NOT FOR USE IN DIAGNOSTIC PROCEDURES"

Our Abpromise to you: Quality guaranteed and expert technical support

- Replacement or refund for products not performing as stated on the datasheet
- Valid for 12 months from date of delivery
- Response to your inquiry within 24 hours
- We provide support in Chinese, English, French, German, Japanese and Spanish
- Extensive multi-media technical resources to help you
- We investigate all quality concerns to ensure our products perform to the highest standards

If the product does not perform as described on this datasheet, we will offer a refund or replacement. For full details of the Abpromise, please visit <https://www.abcam.co.jp/abpromise> or contact our technical team.

Terms and conditions

- Guarantee only valid for products bought direct from Abcam or one of our authorized distributors