

# Anti-ERCC1 antibody [8F1] ab2356

[28 References](#) [画像数 4](#)

### 製品の概要

---

|              |   |
|--------------|---|
| 製品名          | Anti-ERCC1 antibody [8F1]   |
| 製品の詳細        | Mouse monoclonal [8F1] to ERCC1   |
| 由来種          | Mouse   |
| アプリケーション     | <b>適用あり:</b> ICC/IF, IHC-P, Flow Cyt  |
| 種交差性         | <b>交差種:</b> Human   |
| 免疫原          | Recombinant full length protein corresponding to Human ERCC1.   |
| ポジティブ・コントロール | Tonsil.   |
| 特記事項         | <p>The Life Science industry has been in the grips of a reproducibility crisis for a number of years. Abcam is leading the way in addressing this with our range of recombinant monoclonal antibodies and knockout edited cell lines for gold-standard validation. Please check that this product meets your needs before purchasing.</p> <p>If you have any questions, special requirements or concerns, please send us an inquiry and/or contact our Support team ahead of purchase. Recommended alternatives for this product can be found below, along with publications, customer reviews and Q&amp;As</p> |

### 製品の特性

---

|        |   |
|--------|---|
| 製品の状態  | Liquid  |
| 保存方法   | Shipped at 4°C. Store at +4°C short term (1-2 weeks). Store at -20°C or -80°C. Avoid freeze / thaw cycle. |
| バッファー  | pH: 7.3<br>Preservative: 0.05% Sodium azide<br>Constituent: 1% BSA  |
| 精製度    | IgG fraction  |
| ポリ/モノ  | モノクローナル   |
| クローン名  | 8F1   |
| ミエローマ  | unknown   |
| アイソタイプ | IgG2b   |
| 軽鎖の種類  | unknown   |

## アプリケーション

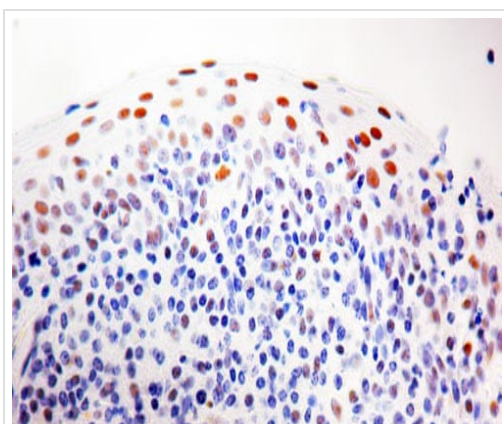
**The Abpromise guarantee** Abpromise保証は、次のテスト済みアプリケーションにおけるab2356の使用に適用されます  
アプリケーションノートには、推奨の開始希釈率がありますが、適切な希釈率につきましてはご検討ください。

| アプリケーション | Abreviews | 特記事項  |
|----------|-----------|---|
| ICC/IF   |           | Use a concentration of 1 µg/ml.   |
| IHC-P    |           | 1/50 - 1/100. Perform heat mediated antigen retrieval before commencing with IHC staining protocol.   |
| Flow Cyt |           | Use 1µg for 10 <sup>6</sup> cells.<br><b>ab170192</b> - Mouse monoclonal IgG2b, is suitable for use as an isotype control with this antibody. |

## ターゲット情報

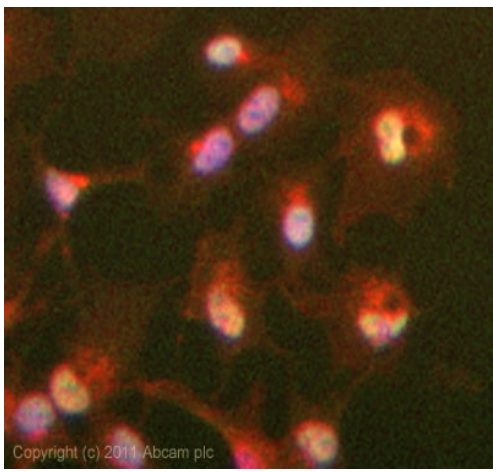
|              |  |
|--------------|--|
| <b>機能</b>    | Structure-specific DNA repair endonuclease responsible for the 5'-incision during DNA repair.  |
| <b>関連疾患</b>  | Defects in ERCC1 are the cause of cerebro-oculo-facio-skeletal syndrome type 4 (COFS4) [MIM:610758]. COFS is a degenerative autosomal recessive disorder of prenatal onset affecting the brain, eye and spinal cord. After birth, it leads to brain atrophy, hypoplasia of the corpus callosum, hypotonia, cataracts, microcornea, optic atrophy, progressive joint contractures and growth failure. Facial dysmorphism is a constant feature. Abnormalities of the skull, eyes, limbs, heart and kidney also occur. |
| <b>配列類似性</b> | Belongs to the ERCC1/RAD10/SWI10 family.   |
| <b>細胞内局在</b> | Nucleus.   |

## 画像

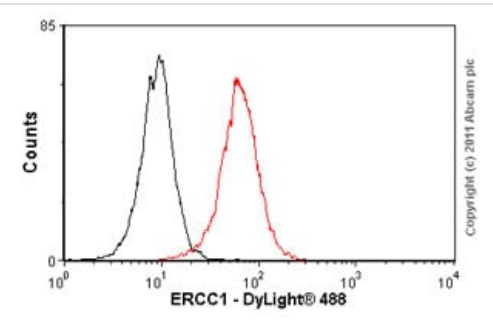


Immunohistochemical analysis of formalin-fixed, paraffin-embedded Human tonsil tissue with ab2356 labelling ERCC1.

Immunohistochemistry (Formalin/PFA-fixed paraffin-embedded sections) - Anti-ERCC1 antibody [8F1] (ab2356)



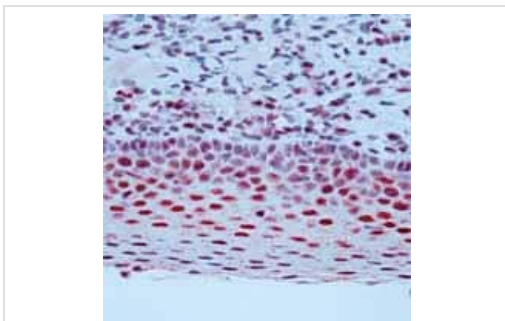
Immunocytochemistry/ Immunofluorescence - Anti-ERCC1 antibody [8F1] (ab2356)



Flow Cytometry - Anti-ERCC1 antibody [8F1] (ab2356)

ICC/IF image of ab2356 stained HepG2 cells. The cells were 4% formaldehyde fixed (10 min) and then incubated in 1%BSA / 10% normal goat serum / 0.3M glycine in 0.1% PBS-Tween for 1h to permeabilise the cells and block non-specific protein-protein interactions. The cells were then incubated with the antibody (ab2356, 1µg/ml) overnight at +4°C. The secondary antibody (green) was Alexa Fluor® 488 goat anti-mouse IgG (H+L) used at a 1/1000 dilution for 1h. Alexa Fluor® 594 WGA was used to label plasma membranes (red) at a 1/200 dilution for 1h. DAPI was used to stain the cell nuclei (blue) at a concentration of 1.43µM.

Overlay histogram showing HeLa cells stained with ab2356 (red line). The cells were fixed with 100% methanol (5 min) and then permeabilized with 0.1% PBS-Tween for 20 min. The cells were then incubated in 1x PBS / 10% normal goat serum / 0.3M glycine to block non-specific protein-protein interactions followed by the antibody (ab2356, 1µg/1x10<sup>6</sup> cells) for 30 min at 22°C. The secondary antibody used was DyLight® 488 goat anti-mouse IgG (H+L) ([ab96879](#)) at 1/500 dilution for 30 min at 22°C. Isotype control antibody (black line) was mouse IgG2b [PLPV219] ([ab91366](#), 2µg/1x10<sup>6</sup> cells) used under the same conditions. Acquisition of >5,000 events was performed. This antibody gave a positive signal in HeLa cells fixed with 4% paraformaldehyde (10 min)/permeabilized in 0.1% PBS-Tween used under the same conditions.



Immunohistochemistry (Formalin/PFA-fixed paraffin-embedded sections) - Anti-ERCC1 antibody [8F1] (ab2356)

Immunohistochemical analysis of formalin fixed paraffin embedded human tonsil tissue sections with ab2356 labelling ERCC1.

**Please note:** All products are "FOR RESEARCH USE ONLY. NOT FOR USE IN DIAGNOSTIC PROCEDURES"

### **Our Abpromise to you: Quality guaranteed and expert technical support**

---

- Replacement or refund for products not performing as stated on the datasheet
- Valid for 12 months from date of delivery
- Response to your inquiry within 24 hours
  
- We provide support in Chinese, English, French, German, Japanese and Spanish
- Extensive multi-media technical resources to help you
- We investigate all quality concerns to ensure our products perform to the highest standards

If the product does not perform as described on this datasheet, we will offer a refund or replacement. For full details of the Abpromise, please visit <https://www.abcam.co.jp/abpromise> or contact our technical team.

### **Terms and conditions**

---

- Guarantee only valid for products bought direct from Abcam or one of our authorized distributors