

Anti-ErbB4 / HER4 (phospho Y1284) antibody ab61059

★★★★★ [3 Abreviews](#) [4 References](#) [画像数 2](#)

製品の概要

製品名	Anti-ErbB4 / HER4 (phospho Y1284) antibody
製品の詳細	Rabbit polyclonal to ErbB4 / HER4 (phospho Y1284)
由来種	Rabbit
アプリケーション	適用あり: WB, ELISA, IHC-FoFr, ICC/IF
種交差性	交差種: Mouse, Rat, Human
免疫原	Synthetic peptide corresponding to Human ErbB4/ HER4 aa 1250-1350 (phospho Y1284). Database link: Q15303
特記事項	<p>The Life Science industry has been in the grips of a reproducibility crisis for a number of years. Abcam is leading the way in addressing this with our range of recombinant monoclonal antibodies and knockout edited cell lines for gold-standard validation. Please check that this product meets your needs before purchasing.</p> <p>If you have any questions, special requirements or concerns, please send us an inquiry and/or contact our Support team ahead of purchase. Recommended alternatives for this product can be found below, along with publications, customer reviews and Q&As</p>

製品の特性

製品の状態	Liquid
保存方法	Shipped at 4°C. Store at -20°C. Stable for 12 months at -20°C.
バッファー	<p>pH: 7.40</p> <p>Preservative: 0.02% Sodium azide</p> <p>Constituents: PBS, 50% Glycerol, 0.87% Sodium chloride</p> <p>Without Mg²⁺ and Ca²⁺</p>
精製度	Immunogen affinity purified
特記事項 (精製)	The antibody against non-phosphopeptide was removed by chromatography using non-phosphopeptide corresponding to the phosphorylation site.
ポリ/モノ	ポリクローナル
アイソタイプ	IgG

アプリケーション

The Abpromise guarantee Abpromise保証は、 次のテスト済みアプリケーションにおけるab61059の使用に適用されます
アプリケーションノートには、推奨の開始希釈率がありますが、適切な希釈率につきましてはご検討ください。

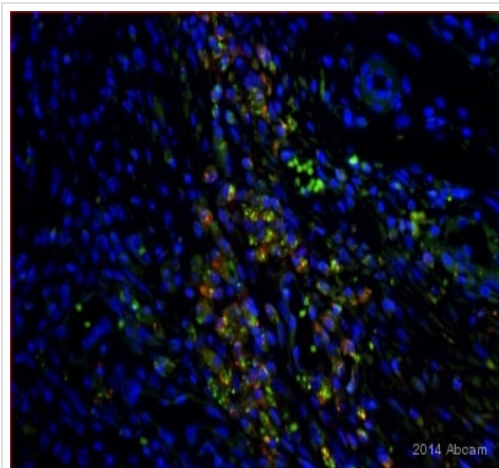
アプリケーション	Abreviews	特記事項
WB	★★★★★ (2)	Use at an assay dependent concentration.
ELISA		Use at an assay dependent concentration.
IHC-FoFr		Use at an assay dependent concentration. PubMed: 21903113
ICC/IF	★★★★★ (1)	1/100 - 1/500.

ターゲット情報

機能	Specifically binds and is activated by neuregulins, NRG-2, NRG-3, heparin-binding EGF-like growth factor, betacellulin and NTAK. Interaction with these factors induces cell differentiation. Not activated by EGF, TGF- α , and amphiregulin. The C-terminal fragment (CTF) of isoform JMA-A CYT-2 (containing E4ICD2) can stimulate transcription in the presence of YAP1. ERBB4 intracellular domain is involved in the regulation of cell growth. Conflicting reports are likely due at least in part to the opposing effects of the isoform-specific and nuclear-translocated ERBB4 intracellular domains (E4ICD1 and E4ICD2). Overexpression studies in epithelium show growth inhibition using E4ICD1 and increased proliferation using E4ICD2. E4ICD2 has greater in vitro kinase activity than E4ICD1. The kinase activity is required for the nuclear translocation of E4ICD2.
組織特異性	Expressed at highest levels in brain, heart, kidney, in addition to skeletal muscle, parathyroid, cerebellum, pituitary, spleen, testis and breast. Lower levels in thymus, lung, salivary gland, and pancreas. Isoform JM-A CYT-1 and isoform JM-B CYT-1 are expressed in cerebellum, but only the isoform JM-B is expressed in the heart.
配列類似性	Belongs to the protein kinase superfamily. Tyr protein kinase family. EGF receptor subfamily. Contains 1 protein kinase domain.
翻訳後修飾	<p>Isoform JM-A CYT-1 and isoform JM-A CYT-2 but not isoform JM-B CYT-1 and isoform JM-B CYT-2 are processed by ADAM17. Proteolytic processing in response to ligand or 12-O-tetradecanoylphorbol-13-acetate stimulation results in the production of 120 kDa soluble receptor forms and intermediate membrane-anchored 80 kDa fragments (m80HER4), which are further processed by a presenilin-dependent gamma-secretase to release the respective cytoplasmic intracellular domain E4ICD (either E4ICD1/s80Cyt1 or E4ICD2/s80Cyt2). Membrane-anchored 80 kDa fragments of the processed isoform JM-A CYT-1 are more readily degraded by the proteasome than fragments of isoform JM-A CYT-2 suggesting a prevalence of E4ICD2 over E4ICD1.</p> <p>Ligand-binding increases phosphorylation on tyrosine residues. Isoform JM-A CYT-2 is constitutively phosphorylated on tyrosine residues in a ligand-independent manner. E4ICD2 but not E4ICD1 is phosphorylated on tyrosine residues.</p> <p>Ubiquitinated. The ERBB4 intracellular domain is ubiquitinated and targeted to proteasomal degradation during mitosis mediated by the APC/C complex. Isoform JM-A CYT-1 and isoform JM-B CYT-1 are ubiquitinated by WWP1. The ERBB4 intracellular domain (E4ICD1) is ubiquitinated, and this involves NEDD4.</p>

Membrane and Nucleus. Following proteolytical processing E4ICD (E4ICD1 or E4ICD2 generated from the respective isoforms) is translocated to the nucleus. Significantly more E4ICD2 than E4ICD1 is found in the nucleus. E4ICD2 colocalizes with YAP1 in the nucleus.

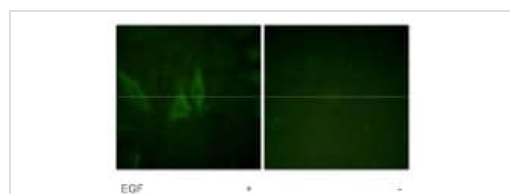
画像



Immunocytochemistry/ Immunofluorescence - Anti-ErbB4 / HER4 (phospho Y1284) antibody (ab61059)

This image is courtesy of an Abreview submitted by Simon Pascual

ab61059 staining ErbB4 / HER4 (phospho Y1284) in rat heart tissue sections by ICC/IF (Immunocytochemistry/immunofluorescence). Sections were fixed with paraformaldehyde, permeabilized with 0.05% Tween20 and blocked with 5% BSA + normal goat serum for 4 hours at 21°C. Samples were incubated with primary antibody (1/30 in 5% BSA + 0.05% Tween20 in TBS) for 12 hours at 4°C. **ab150077**, a goat **anti-rabbit Alexa 488** (1/200) was used as the secondary antibody.



Immunocytochemistry/ Immunofluorescence - Anti-ErbB4 / HER4 (phospho Y1284) antibody (ab61059)

1/100-1/500 ab61059 staining phosphorilated ErbB4 / HER4 on HeLa cells treated with 200nM EGF for 5 minutes, in the absence (left) or presence (right) of the immunizing phosphopeptide.

Please note: All products are "FOR RESEARCH USE ONLY. NOT FOR USE IN DIAGNOSTIC PROCEDURES"

Our Abpromise to you: Quality guaranteed and expert technical support

- Replacement or refund for products not performing as stated on the datasheet
- Valid for 12 months from date of delivery
- Response to your inquiry within 24 hours
- We provide support in Chinese, English, French, German, Japanese and Spanish
- Extensive multi-media technical resources to help you
- We investigate all quality concerns to ensure our products perform to the highest standards

If the product does not perform as described on this datasheet, we will offer a refund or replacement. For full details of the Abpromise, please visit <https://www.abcam.co.jp/abpromise> or contact our technical team.

Terms and conditions

- Guarantee only valid for products bought direct from Abcam or one of our authorized distributors