


Anti-ErbB4 / HER4 antibody [E200] ab32375

リコンビナント **RabMAb**

★★★★★ **2 Abreviews** **26 References** 画像数 4

製品の概要

製品名	Anti-ErbB4 / HER4 antibody [E200]
製品の詳細	Rabbit monoclonal [E200] to ErbB4 / HER4
由来種	Rabbit
特異性	This antibody is specific to ErbB4 / HER4. It does not cross react with other EGF receptor family members.
アプリケーション	適用あり: WB, IP 適用なし: ICC/IF
種交差性	交差種: Human 交差が予測される動物種: Mouse, Rat 
免疫原	Synthetic peptide within Human ErbB4/ HER4 (C terminal). The exact sequence is proprietary.
ポジティブ・コントロール	WB: MCF7 and T47D cell lysate. IP: HEK-293 cell lysate.
特記事項	This product is a recombinant monoclonal antibody, which offers several advantages including: <ul style="list-style-type: none"> - High batch-to-batch consistency and reproducibility - Improved sensitivity and specificity - Long-term security of supply - Animal-free production For more information see here . Our RabMAb [®] technology is a patented hybridoma-based technology for making rabbit monoclonal antibodies. For details on our patents, please refer to RabMAb[®] patents .

製品の特性

製品の状態	Liquid
保存方法	Shipped at 4°C. Store at +4°C short term (1-2 weeks). Upon delivery aliquot. Store at -20°C. Avoid freeze / thaw cycle.
バッファー	pH: 7.20 Preservative: 0.01% Sodium azide Constituents: 49% PBS, 50% Glycerol (glycerin, glycerine), 0.05% BSA
精製度	Protein A purified

ポリ/モノ	モノクローナル
クローン名	E200
アイソタイプ	IgG

アプリケーション

The Abpromise guarantee **Abpromise保証は、次のテスト済みアプリケーションにおけるab32375の使用に適用されます**
 アプリケーションノートには、推奨の開始希釈率がありますが、適切な希釈率につきましてはご検討ください。

アプリケーション	Abreviews	特記事項
WB		1/1000 - 1/10000. Predicted molecular weight: 147 kDa.
IP		1/100.

追加情報 Is unsuitable for ICC/IF.

ターゲット情報

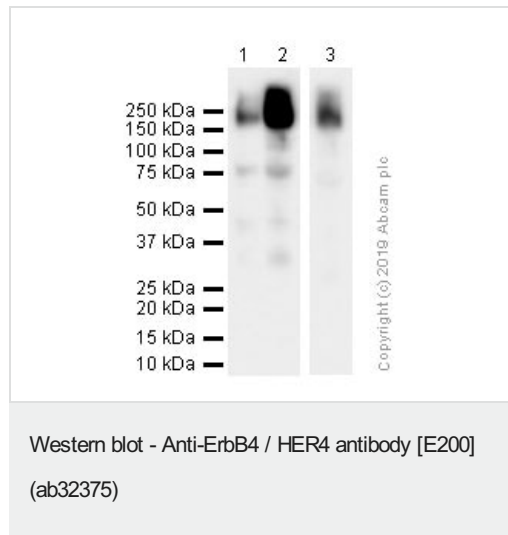
機能	Specifically binds and is activated by neuregulins, NRG-2, NRG-3, heparin-binding EGF-like growth factor, betacellulin and NTAK. Interaction with these factors induces cell differentiation. Not activated by EGF, TGF- α , and amphiregulin. The C-terminal fragment (CTF) of isoform JMA-A CYT-2 (containing E4ICD2) can stimulate transcription in the presence of YAP1. ERBB4 intracellular domain is involved in the regulation of cell growth. Conflicting reports are likely due at least in part to the opposing effects of the isoform-specific and nuclear-translocated ERBB4 intracellular domains (E4ICD1 and E4ICD2). Overexpression studies in epithelium show growth inhibition using E4ICD1 and increased proliferation using E4ICD2. E4ICD2 has greater in vitro kinase activity than E4ICD1. The kinase activity is required for the nuclear translocation of E4ICD2.
組織特異性	Expressed at highest levels in brain, heart, kidney, in addition to skeletal muscle, parathyroid, cerebellum, pituitary, spleen, testis and breast. Lower levels in thymus, lung, salivary gland, and pancreas. Isoform JM-A CYT-1 and isoform JM-B CYT-1 are expressed in cerebellum, but only the isoform JM-B is expressed in the heart.
配列類似性	Belongs to the protein kinase superfamily. Tyr protein kinase family. EGF receptor subfamily. Contains 1 protein kinase domain.
翻訳後修飾	Isoform JM-A CYT-1 and isoform JM-A CYT-2 but not isoform JM-B CYT-1 and isoform JM-B CYT-2 are processed by ADAM17. Proteolytic processing in response to ligand or 12-O-tetradecanoylphorbol-13-acetate stimulation results in the production of 120 kDa soluble receptor forms and intermediate membrane-anchored 80 kDa fragments (m80HER4), which are further processed by a presenilin-dependent gamma-secretase to release the respective cytoplasmic intracellular domain E4ICD (either E4ICD1/s80Cyt1 or E4ICD2/s80Cyt2). Membrane-anchored 80 kDa fragments of the processed isoform JM-A CYT-1 are more readily degraded by the proteasome than fragments of isoform JM-A CYT-2 suggesting a prevalence of E4ICD2 over E4ICD1. Ligand-binding increases phosphorylation on tyrosine residues. Isoform JM-A CYT-2 is constitutively phosphorylated on tyrosine residues in a ligand-independent manner. E4ICD2 but not E4ICD1 is phosphorylated on tyrosine residues. Ubiquitinated. The ERBB4 intracellular domain is ubiquitinated and targeted to proteosomal

degradation during mitosis mediated by the APC/C complex. Isoform JM-A CYT-1 and isoform JM-B CYT-1 are ubiquitinated by WWP1. The ERBB4 intracellular domain (E4ICD1) is ubiquitinated, and this involves NEDD4.

細胞内局在

Membrane and Nucleus. Following proteolytical processing E4ICD (E4ICD1 or E4ICD2 generated from the respective isoforms) is translocated to the nucleus. Significantly more E4ICD2 than E4ICD1 is found in the nucleus. E4ICD2 colocalizes with YAP1 in the nucleus.

画像



All lanes : Anti-ErbB4 / HER4 antibody [E200] (ab32375) at 1.09 µg/ml

Lane 1 : MCF7 (Human breast adenocarcinoma epithelial cell)

Lane 2 : T47D (Human ductal breast epithelial tumor epithelial cell)

Lane 3 : T47D (Human ductal breast epithelial tumor epithelial cell)

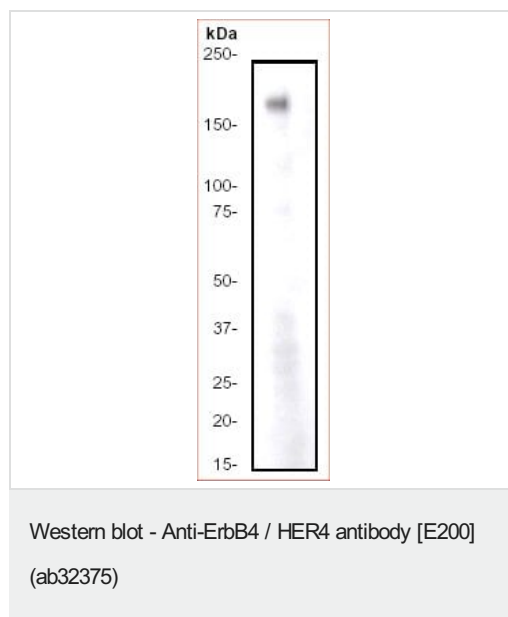
low exposure image of lane 2

Lysates/proteins at 20 µg per lane.

Secondary

All lanes : Goat Anti-Rabbit IgG H&L (HRP) ([ab97051](#)) at 0.05 µg/ml

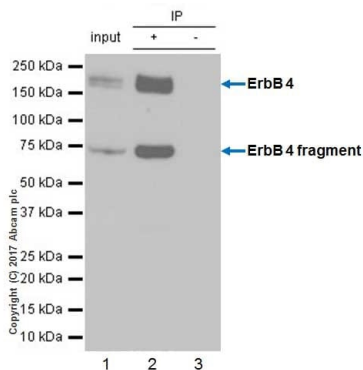
Predicted band size: 147 kDa



Anti-ErbB4 / HER4 antibody [E200] (ab32375) at 1/4000 dilution + MCF7 cell lysate

Predicted band size: 147 kDa

Observed band size: 185 kDa



Immunoprecipitation - Anti-ErbB4 / HER4 antibody
[E200] (ab32375)

Lane 1 (input): HEK-293 (human embryonic kidney epithelial cell) whole cell lysate, 10µg

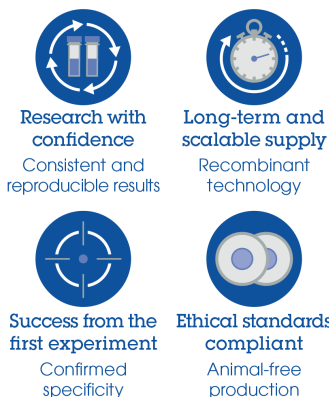
Lane 2 (+): HEK-293 whole cell lysate

Lane 3 (-): Rabbit monoclonal IgG (**ab172730**) instead of ab32375 in HEK-293 whole cell lysate

Ab32375 Immunoprecipitating ErbB 4 in HEK-293 whole cell lysate. Capture antibody was used at a 1:50 dilution (2µg in 0.35mg lysates). For western blotting, primary antibody used as ab32375 at 1:500 dilution. Ab131366 VeriBlot for IP Detection Reagent (HRP) was used for detection at 1:1000 dilution. The lower band at around 75kDa should be proteolysis fragment based on the literature. (PMID: 9362517)

Blocking and diluting buffer: 5% NFDM/TBST

Why choose a recombinant antibody?



Anti-ErbB4 / HER4 antibody [E200] (ab32375)

Please note: All products are "FOR RESEARCH USE ONLY. NOT FOR USE IN DIAGNOSTIC PROCEDURES"

Our Abpromise to you: Quality guaranteed and expert technical support

- Replacement or refund for products not performing as stated on the datasheet
- Valid for 12 months from date of delivery
- Response to your inquiry within 24 hours
- We provide support in Chinese, English, French, German, Japanese and Spanish
- Extensive multi-media technical resources to help you
- We investigate all quality concerns to ensure our products perform to the highest standards

If the product does not perform as described on this datasheet, we will offer a refund or replacement. For full details of the Abpromise,

please visit <https://www.abcam.co.jp/abpromise> or contact our technical team.

Terms and conditions

- Guarantee only valid for products bought direct from Abcam or one of our authorized distributors