

Anti-ErbB3 / HER3 (phospho Y1289) antibody [EPR2325] ab76469

リコンビナント **RabMAb**

5 References [画像数 3](#)

製品の概要

製品名	Anti-ErbB3 / HER3 (phospho Y1289) antibody [EPR2325]
製品の詳細	Rabbit monoclonal [EPR2325] to ErbB3 / HER3 (phospho Y1289)
由来種	Rabbit
特異性	This antibody only detects ErbB 3 phosphorylated on Tyrosine 1289.
アプリケーション	適用あり: WB, ICC/IF 適用なし: Flow Cyt, IHC-P or IP
種交差性	交差種: Human
免疫原	Synthetic peptide. This information is proprietary to Abcam and/or its suppliers.
ポジティブ・コントロール	SKBR3 cell lysate treated with Neuregulin. MCF7 cells.
特記事項	<p>This product is a recombinant monoclonal antibody, which offers several advantages including:</p> <ul style="list-style-type: none"> - High batch-to-batch consistency and reproducibility - Improved sensitivity and specificity - Long-term security of supply - Animal-free production <p>For more information see here.</p> <p>Our RabMAb[®] technology is a patented hybridoma-based technology for making rabbit monoclonal antibodies. For details on our patents, please refer to RabMAb[®] patents.</p> <p>Rat: We have preliminary internal testing data to indicate this antibody may not react with this species. Please contact us for more information.</p>

製品の特性

製品の状態	Liquid
保存方法	Shipped at 4°C. Store at -20°C. Stable for 12 months at -20°C.
バッファー	<p>pH: 7.20</p> <p>Preservative: 0.01% Sodium azide</p> <p>Constituents: 9% PBS, 40% Glycerol (glycerin, glycerine), 0.05% BSA, 50% Tissue culture supernatant</p>

精製度	Protein A purified
ポリ/モノ	モノクローナル
クローン名	EPR2325
アイソタイプ	IgG

アプリケーション

The Abpromise guarantee **Abpromise保証は、次のテスト済みアプリケーションにおけるab76469の使用に適用されます**
 アプリケーションノートには、推奨の開始希釈率がありますが、適切な希釈率につきましてはご検討ください。

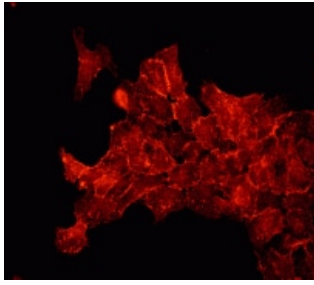
アプリケーション	Abreviews	特記事項
WB		1/2500 - 1/5000. Detects a band of approximately 185 kDa (predicted molecular weight: 148 kDa).
ICC/IF		1/100.

追加情報 Is unsuitable for Flow Cyt, IHC-P or IP.

ターゲット情報

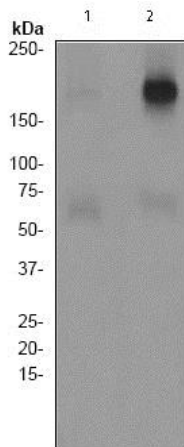
機能	Binds and is activated by neuregulins and NTAK.
組織特異性	Epithelial tissues and brain.
関連疾患	Defects in ERBB3 are the cause of lethal congenital contracture syndrome type 2 (LCCS2) [MIM:607598]; also called Israeli Bedouin multiple contracture syndrome type A. LCCS2 is an autosomal recessive neurogenic form of a neonatally lethal arthrogryposis that is associated with atrophy of the anterior horn of the spinal cord. The LCCS2 syndrome is characterized by multiple joint contractures, anterior horn atrophy in the spinal cord, and a unique feature of a markedly distended urinary bladder. The phenotype suggests a spinal cord neuropathic etiology.
配列類似性	Belongs to the protein kinase superfamily. Tyr protein kinase family. EGF receptor subfamily. Contains 1 protein kinase domain.
発生段階	Overexpressed in a subset of human mammary tumors.
ドメイン	The cytoplasmic part of the receptor may interact with the SH2 or SH3 domains of many signal-transducing proteins.
翻訳後修飾	Ligand-binding increases phosphorylation on tyrosine residues and promotes its association with the p85 subunit of phosphatidylinositol 3-kinase.
細胞内局在	Secreted and Cell membrane.

画像



Immunocytochemistry/ Immunofluorescence - Anti-ErbB3 / HER3 (phospho Y1289) antibody [EPR2325] (ab76469)

Immunofluorescent staining of MCF7 cells using ab76469 at 1/100 dilution.



Western blot - Anti-ErbB3 / HER3 (phospho Y1289) antibody [EPR2325] (ab76469)

All lanes : Anti-ErbB3 / HER3 (phospho Y1289) antibody [EPR2325] (ab76469) at 1/5000 dilution

Lane 1 : SKBR3 cell lysate untreated

Lane 2 : SKBR3 cell lysate treated with Neuregulin

Lysates/proteins at 10 µg per lane.

Secondary

All lanes : HRP labelled goat anti-rabbit at 1/2000 dilution

Predicted band size: 148 kDa

Observed band size: 185 kDa

Why choose a recombinant antibody?



Research with confidence

Consistent and reproducible results



Long-term and scalable supply

Recombinant technology



Success from the first experiment

Confirmed specificity



Ethical standards compliant

Animal-free production

Anti-ErbB3 / HER3 (phospho Y1289) antibody
[EPR2325] (ab76469)

Please note: All products are "FOR RESEARCH USE ONLY. NOT FOR USE IN DIAGNOSTIC PROCEDURES"

Our Abpromise to you: Quality guaranteed and expert technical support

- Replacement or refund for products not performing as stated on the datasheet
- Valid for 12 months from date of delivery
- Response to your inquiry within 24 hours
- We provide support in Chinese, English, French, German, Japanese and Spanish
- Extensive multi-media technical resources to help you
- We investigate all quality concerns to ensure our products perform to the highest standards

If the product does not perform as described on this datasheet, we will offer a refund or replacement. For full details of the Abpromise, please visit <https://www.abcam.co.jp/abpromise> or contact our technical team.

Terms and conditions

- Guarantee only valid for products bought direct from Abcam or one of our authorized distributors