

# Anti-ErbB2 / HER2 (phospho Y877) antibody [EPR2324Y] ab75873

リコンビナント **RabMAb**

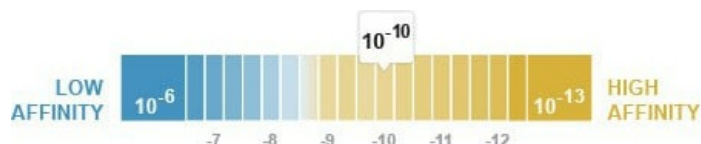
**1 References**   **画像数 6**

### 製品の概要

製品名	Anti-ErbB2 / HER2 (phospho Y877) antibody [EPR2324Y]
製品の詳細	Rabbit monoclonal [EPR2324Y] to ErbB2 / HER2 (phospho Y877)
由来種	Rabbit
アプリケーション	<b>適用あり:</b> Dot blot, WB, ICC/IF, Flow Cyt (Intra) <b>適用なし:</b> IHC-P or IP
種交差性	<b>交差種:</b> Human
免疫原	Synthetic peptide. This information is proprietary to Abcam and/or its suppliers.
ポジティブ・コントロール	HeLa and SKBR3 cell lysates treated with EGF. SKBR3 cells.
特記事項	<p>This product is a recombinant monoclonal antibody, which offers several advantages including:</p> <ul style="list-style-type: none"> <li>- High batch-to-batch consistency and reproducibility</li> <li>- Improved sensitivity and specificity</li> <li>- Long-term security of supply</li> <li>- Animal-free production</li> </ul> <p>For more information <a href="#">see here</a>.</p> <p>Our RabMAb<sup>®</sup> technology is a patented hybridoma-based technology for making rabbit monoclonal antibodies. For details on our patents, please refer to <a href="#">RabMAb<sup>®</sup> patents</a>.</p> <p>Mouse, Rat: We have preliminary internal testing data to indicate this antibody may not react with these species. Please contact us for more information.</p>

### 製品の特性

製品の状態	Liquid
保存方法	Shipped at 4°C. Store at -20°C. Stable for 12 months at -20°C.
解離定数 (K <sub>D</sub> 値)	K <sub>D</sub> = 8.30 x 10 <sup>-10</sup> M



[Learn more about K<sub>D</sub>](#)

バッファー	pH: 7.20 Preservative: 0.05% Sodium azide Constituents: 0.1% BSA, 40% Glycerol (glycerin, glycerine), 9.85% Tris glycine, 50% Tissue culture supernatant
精製度	Protein A purified
ポリ/モノ	モノクローナル
クローン名	EPR2324Y
アイソタイプ	IgG

#### アプリケーション

**The Abpromise guarantee**      **Abpromise保証は、次のテスト済みアプリケーションにおけるab75873の使用に適用されます**  
アプリケーションノートには、推奨の開始希釈率がありますが、適切な希釈率につきましてはご検討ください。

アプリケーション	Abreviews	特記事項
Dot blot		1/1000.
WB		1/500 - 1/1000. Detects a band of approximately 180 kDa (predicted molecular weight: 138 kDa).
ICC/IF		1/50 - 1/100.
Flow Cyt (Intra)		Use at an assay dependent concentration.

**追加情報**      Is unsuitable for IHC-P or IP.

#### ターゲット情報

機能	Protein tyrosine kinase that is part of several cell surface receptor complexes, but that apparently needs a coreceptor for ligand binding. Essential component of a neuregulin-receptor complex, although neuregulins do not interact with it alone. GP30 is a potential ligand for this receptor. Regulates outgrowth and stabilization of peripheral microtubules (MTs). Upon ERBB2 activation, the MEMO1-RHOA-DIAPH1 signaling pathway elicits the phosphorylation and thus the inhibition of GSK3B at cell membrane. This prevents the phosphorylation of APC and CLASP2, allowing its association with the cell membrane. In turn, membrane-bound APC allows the localization of MACF1 to the cell membrane, which is required for microtubule capture and stabilization. In the nucleus is involved in transcriptional regulation. Associates with the 5'-TCAAATTC-3' sequence in the PTGS2/COX-2 promoter and activates its transcription. Implicated in transcriptional activation of CDKN1A; the function involves STAT3 and SRC. Involved in the transcription of rRNA genes by RNA Pol I and enhances protein synthesis and cell growth.
組織特異性	Expressed in a variety of tumor tissues including primary breast tumors and tumors from small bowel, esophagus, kidney and mouth.
関連疾患	Hereditary diffuse gastric cancer Glioma Ovarian cancer Lung cancer

Gastric cancer

Chromosomal aberrations involving ERBB2 may be a cause gastric cancer. Deletions within 17q12 region producing fusion transcripts with CDK12, leading to CDK12-ERBB2 fusion leading to truncated CDK12 protein not in-frame with ERBB2.

#### 配列類似性

Belongs to the protein kinase superfamily. Tyr protein kinase family. EGF receptor subfamily. Contains 1 protein kinase domain.

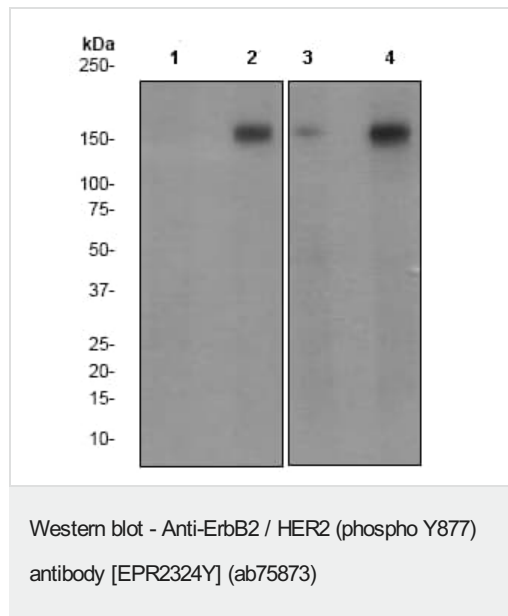
#### 翻訳後修飾

Autophosphorylated. Autophosphorylation occurs in trans, i.e. one subunit of the dimeric receptor phosphorylates tyrosine residues on the other subunit (Probable). Ligand-binding increases phosphorylation on tyrosine residues (PubMed:27134172). Signaling via SEMA4C promotes phosphorylation at Tyr-1248 (PubMed:17554007). Dephosphorylated by PTPN12 (PubMed:27134172).

#### 細胞内局在

Cytoplasm. Nucleus and Cell membrane. Cytoplasm, perinuclear region. Nucleus. Translocation to the nucleus requires endocytosis, probably endosomal sorting and is mediated by importin beta-1/KPNB1.

#### 画像



**All lanes :** Anti-ErbB2 / HER2 (phospho Y877) antibody [EPR2324Y] (ab75873) at 1/1000 dilution

**Lane 1 :** HeLa cell lysate, untreated

**Lane 2 :** HeLa cell lysate, treated with EGF

**Lane 3 :** SKBR-3 cell lysate, untreated

**Lane 4 :** SKBR-3 cell lysate, treated with EGF

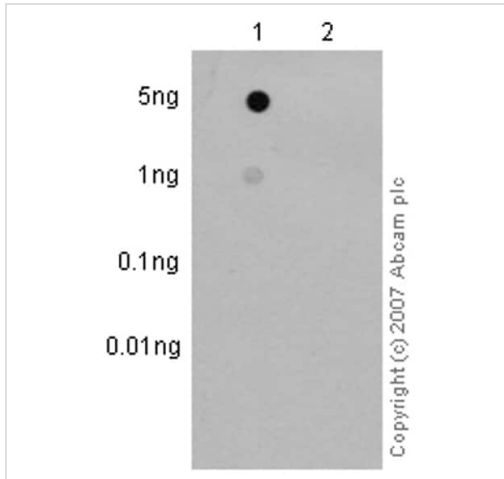
Lysates/proteins at 10 µg per lane.

#### Secondary

**All lanes :** HRP labelled goat anti-rabbit at 1/2000 dilution

**Predicted band size:** 138 kDa

**Observed band size:** 180 kDa

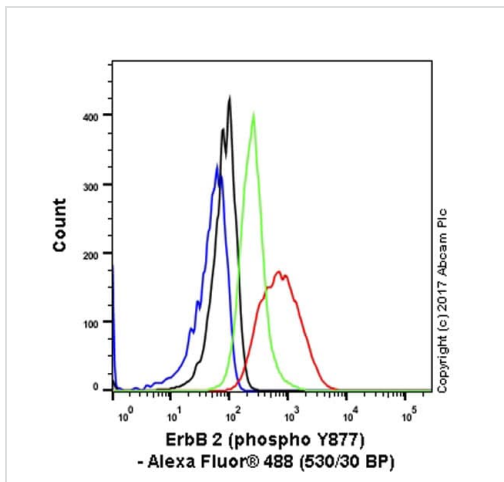


Dot Blot - Anti-ErbB2 / HER2 (phospho Y877)  
antibody [EPR2324Y] (ab75873)

Dot blot analysis of ErbB 2 (pY877) peptide (Lane 1) and ErbB 2 non-phospho peptide (Lane 2) labelling ErbB 2 (phospho Y877) with ab75873 at a dilution of 1/1000. A Peroxidase-conjugated goat anti-rabbit IgG (H+L) was used as the secondary antibody at a dilution of 1/2500.

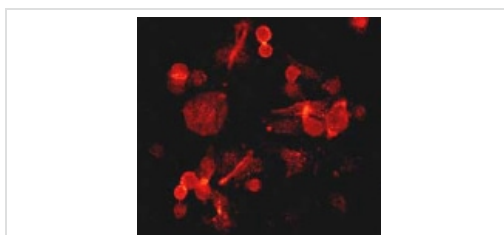
Blocking and dilution buffer: 5% NFDM/TBST.

Exposure time: 3 minutes.



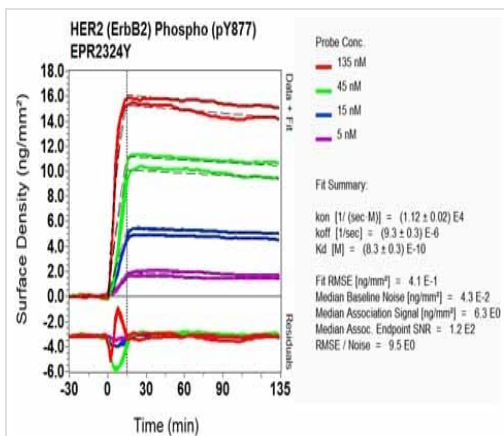
Flow Cytometry (Intracellular) - Anti-ErbB2 / HER2  
(phospho Y877) antibody [EPR2324Y] (ab75873)

Intracellular Flow Cytometry analysis of A431 (human epidermoid carcinoma) untreated/treated with 200 ng/ml EGF for 15 minutes labeling ErbB 2 with unpurified ab75873 at 1/20 (red). Cells were fixed with 4% paraformaldehyde and permeabilised with 90% methanol. A Goat Anti-Rabbit IgG H&L (Alexa Fluor® 488) (**ab150077**) (1/2000 dilution) was used as the secondary antibody. Rabbit IgG, monoclonal [EPR25A] - Isotype Control (**ab172730**) (Black) was used as the isotype control, cells without incubation with primary antibody and secondary antibody (Blue) were used as the unlabeled control.



Immunocytochemistry/ Immunofluorescence - Anti-  
ErbB2 / HER2 (phospho Y877) antibody  
[EPR2324Y] (ab75873)

ab75873 at 1/50 dilution staining ErbB 2 in SKBR3 cells by Immunofluorescence.



OR-D Scanning - Anti-ErbB2 / HER2 (phospho Y877) antibody [EPR2324Y] (ab75873)

Equilibrium dissociation constant ( $K_D$ )

Learn more about  $K_D$

[Click here to learn more about  \$K\_D\$](#)

Why choose a recombinant antibody?



Research with confidence  
Consistent and reproducible results



Long-term and scalable supply  
Recombinant technology



Success from the first experiment  
Confirmed specificity



Ethical standards compliant  
Animal-free production

Anti-ErbB2 / HER2 (phospho Y877) antibody [EPR2324Y] (ab75873)

**Please note:** All products are "FOR RESEARCH USE ONLY. NOT FOR USE IN DIAGNOSTIC PROCEDURES"

## Our Abpromise to you: Quality guaranteed and expert technical support

- Replacement or refund for products not performing as stated on the datasheet
- Valid for 12 months from date of delivery
- Response to your inquiry within 24 hours
- We provide support in Chinese, English, French, German, Japanese and Spanish
- Extensive multi-media technical resources to help you
- We investigate all quality concerns to ensure our products perform to the highest standards

If the product does not perform as described on this datasheet, we will offer a refund or replacement. For full details of the Abpromise, please visit <https://www.abcam.co.jp/abpromise> or contact our technical team.

#### **Terms and conditions**

---

- Guarantee only valid for products bought direct from Abcam or one of our authorized distributors