


Anti-ErbB2 / HER2 antibody [3B5] ab16901

★★★★★ [11 Abreviews](#) [63 References](#) [画像数 7](#)

製品の概要

製品名	Anti-ErbB2 / HER2 antibody [3B5]
製品の詳細	Mouse monoclonal [3B5] to ErbB2 / HER2
由来種	Mouse
アプリケーション	適用あり: IHC-P, WB, Flow Cyt
種交差性	交差種: Human 交差が予測される動物種: Mouse, Rat, Dog, Monkey 
免疫原	Synthetic peptide corresponding to Human ErbB2/ HER2 aa 1242-1255 (C terminal). Sequence: TAENPEYLGLDVPV Database link: P04626 Run BLAST with Run BLAST with
エピトープ	Within amino acids 1242 - 1255 of human c-neu (TAENPEYLGLDVPV)
ポジティブ・コントロール	SK-BR-3 cells or breast carcinoma tissue
特記事項	<p>For paraffin sections, we recommend pretreating with a pressure cooker, but trypsin and heat will also work well. Including 0.05% saponin during staining of paraffin sections may help reduce background. In one study ductal carcinomas in situ displaying large-cell, comedo growth type, were stained while none of 16 ductal carcinomas in situ of small-cell, papillary, or cribriform growth type were stained by this antibody.</p> <p>The Life Science industry has been in the grips of a reproducibility crisis for a number of years. Abcam is leading the way in addressing this with our range of recombinant monoclonal antibodies and knockout edited cell lines for gold-standard validation. Please check that this product meets your needs before purchasing.</p> <p>If you have any questions, special requirements or concerns, please send us an inquiry and/or contact our Support team ahead of purchase. Recommended alternatives for this product can be found below, along with publications, customer reviews and Q&As</p>

製品の特性

製品の状態	Liquid
保存方法	Shipped at 4°C. Upon delivery aliquot and store at -20°C. Avoid freeze / thaw cycles.

バッファー	Preservative: 0.09% Sodium azide Constituent: PBS
精製度	Protein G purified
ポリ/モノ	モノクローナル
クローン名	3B5
アイソタイプ	IgG1

アプリケーション

The Abpromise guarantee Abpromise保証は、次のテスト済みアプリケーションにおけるab16901の使用に適用されます
アプリケーションノートには、推奨の開始希釈率がありますが、適切な希釈率につきましてはご検討ください。

アプリケーション	Abreviews	特記事項
IHC-P	★★★★☆ (3)	Use at an assay dependent concentration.
WB	★★★★★ (5)	Use a concentration of 2.5 µg/ml. Detects a band of approximately 190 kDa (predicted molecular weight: 138 kDa).
Flow Cyt	★★★★★ (1)	1/50 - 1/100. ab170190 - Mouse monoclonal IgG1, is suitable for use as an isotype control with this antibody.

ターゲット情報

機能	Protein tyrosine kinase that is part of several cell surface receptor complexes, but that apparently needs a coreceptor for ligand binding. Essential component of a neuregulin-receptor complex, although neuregulins do not interact with it alone. GP30 is a potential ligand for this receptor. Regulates outgrowth and stabilization of peripheral microtubules (MTs). Upon ERBB2 activation, the MEMO1-RHOA-DIAPH1 signaling pathway elicits the phosphorylation and thus the inhibition of GSK3B at cell membrane. This prevents the phosphorylation of APC and CLASP2, allowing its association with the cell membrane. In turn, membrane-bound APC allows the localization of MACF1 to the cell membrane, which is required for microtubule capture and stabilization. In the nucleus is involved in transcriptional regulation. Associates with the 5'-TCAAATTC-3' sequence in the PTGS2/COX-2 promoter and activates its transcription. Implicated in transcriptional activation of CDKN1A; the function involves STAT3 and SRC. Involved in the transcription of rRNA genes by RNA Pol I and enhances protein synthesis and cell growth.
組織特異性	Expressed in a variety of tumor tissues including primary breast tumors and tumors from small bowel, esophagus, kidney and mouth.
関連疾患	Hereditary diffuse gastric cancer Glioma Ovarian cancer Lung cancer Gastric cancer Chromosomal aberrations involving ERBB2 may be a cause gastric cancer. Deletions within 17q12 region producing fusion transcripts with CDK12, leading to CDK12-ERBB2 fusion leading to truncated CDK12 protein not in-frame with ERBB2.

配列類似性

Belongs to the protein kinase superfamily. Tyr protein kinase family. EGF receptor subfamily. Contains 1 protein kinase domain.

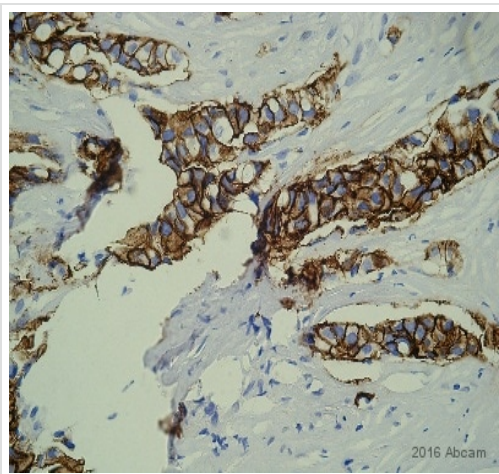
翻訳後修飾

Autophosphorylated. Autophosphorylation occurs in trans, i.e. one subunit of the dimeric receptor phosphorylates tyrosine residues on the other subunit (Probable). Ligand-binding increases phosphorylation on tyrosine residues (PubMed:27134172). Signaling via SEMA4C promotes phosphorylation at Tyr-1248 (PubMed:17554007). Dephosphorylated by PTPN12 (PubMed:27134172).

細胞内局在

Cytoplasm. Nucleus and Cell membrane. Cytoplasm, perinuclear region. Nucleus. Translocation to the nucleus requires endocytosis, probably endosomal sorting and is mediated by importin beta-1/KPNB1.

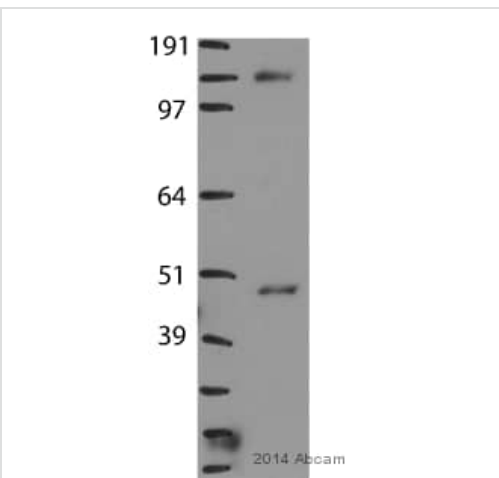
画像



Immunohistochemistry (Formalin/PFA-fixed paraffin-embedded sections) analysis of human breast cancer tissue sections labeling ErbB2 / HER2 with ab16901 at 1/400 dilution. the tissue was fixed with formaldehyde; heat mediated antigen retrieval was performed using a acetate buffer pH6. An undiluted goat anti-mouse HRP conjugated secondary antibody was used.

Immunohistochemistry (Formalin/PFA-fixed paraffin-embedded sections) - Anti-ErbB2 / HER2 antibody [3B5] (ab16901)

This image is courtesy of an anonymous abreview.



Anti-ErbB2 / HER2 antibody [3B5] (ab16901) at 1/250 dilution + Human Huh7 whole cell lysate at 20 µg

Secondary

Goat anti-mouse HRP conjugate at 1/5000 dilution

Predicted band size: 138 kDa

Observed band size: 138 kDa

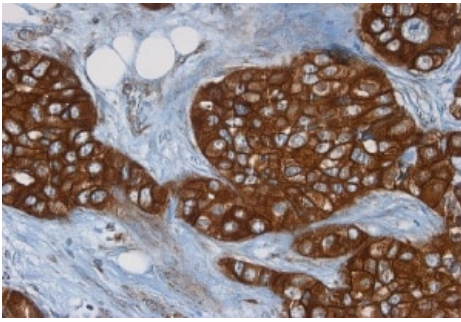
Additional bands at: 48 kDa (possible non-specific binding)

Western blot - Anti-ErbB2 / HER2 antibody [3B5] (ab16901)

This image is courtesy of an anonymous abreview.

Exposure time: 5 minutes

Blocking: 5% milk for 1 hour at 25°C.



Immunohistochemistry (Formalin/PFA-fixed paraffin-embedded sections) - Anti-ErbB2 / HER2 antibody [3B5] (ab16901)

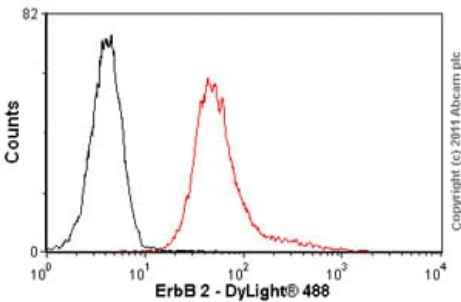
Immunohistochemistry (Formalin/PFA-fixed paraffin-embedded sections) analysis of human Mamma tumor Her2Neu tissue labeling ErbB 2 with ab16901.



Western blot - Anti-ErbB2 / HER2 antibody [3B5] (ab16901)

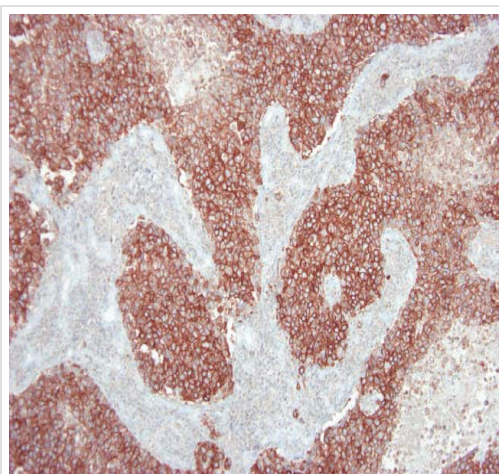
Anti-ErbB2 / HER2 antibody [3B5] (ab16901) at 1 µg/ml + Whole cell lysate HEK293

Predicted band size: 138 kDa



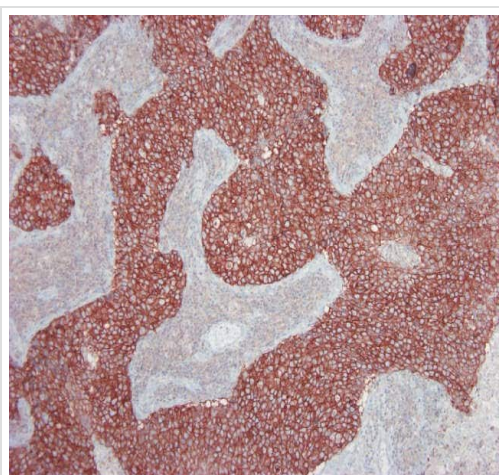
Flow Cytometry - Anti-ErbB2 / HER2 antibody [3B5] (ab16901)

Overlay histogram showing LoVo cells stained with ab16901 (red line). The cells were fixed with methanol (5 min) and then permeabilized with 0.1% PBS-Tween for 20 min. The cells were then incubated in 1x PBS / 10% normal goat serum / 0.3M glycine to block non-specific protein-protein interactions followed by the antibody (ab16901, 1/100 dilution) for 30 min at 22°C. The secondary antibody used was DyLight® 488 goat anti-mouse IgG (H+L) ([ab96879](#)) at 1/500 dilution for 30 min at 22°C. Isotype control antibody (black line) was mouse IgG1 [ICIGG1] ([ab91353](#), 2µg/1x10⁶ cells) used under the same conditions. Acquisition of >5,000 events was performed. This antibody gave a positive signal in LoVo cells fixed with 4% paraformaldehyde (10 min)/permeabilized with 0.1% PBS-Tween used under the same conditions.



Immunohistochemistry (Formalin/PFA-fixed paraffin-embedded sections) analysis of human breast carcinoma labeling ErbB 2 with ab16901 at 1/100.

Immunohistochemistry (Formalin/PFA-fixed paraffin-embedded sections) - Anti-ErbB2 / HER2 antibody [3B5] (ab16901)



Immunohistochemistry analysis of formalin fixed, paraffin embedded tissue section of human breast carcinoma labeling ErbB 2 with at16901 at dilution of 1/1000.

Immunohistochemistry (Formalin/PFA-fixed paraffin-embedded sections) - Anti-ErbB2 / HER2 antibody [3B5] (ab16901)

Please note: All products are "FOR RESEARCH USE ONLY. NOT FOR USE IN DIAGNOSTIC PROCEDURES"

Our Promise to you: Quality guaranteed and expert technical support

- Replacement or refund for products not performing as stated on the datasheet
- Valid for 12 months from date of delivery
- Response to your inquiry within 24 hours
- We provide support in Chinese, English, French, German, Japanese and Spanish

- Extensive multi-media technical resources to help you
- We investigate all quality concerns to ensure our products perform to the highest standards

If the product does not perform as described on this datasheet, we will offer a refund or replacement. For full details of the Abpromise, please visit <https://www.abcam.co.jp/abpromise> or contact our technical team.

Terms and conditions

- Guarantee only valid for products bought direct from Abcam or one of our authorized distributors