


Anti-EPS15R antibody [EP1146Y] ab76004

リコンビナント RabMAb[®]

3 References [画像数 2](#)

製品の概要

製品名	Anti-EPS15R antibody [EP1146Y]
製品の詳細	Rabbit monoclonal [EP1146Y] to EPS15R
由来種	Rabbit
アプリケーション	適用あり: WB 適用なし: Flow Cyt, ICC/IF, IHC-P or IP
種交差性	交差種: Human 交差が予測される動物種: Mouse, Rat 
免疫原	Synthetic peptide within Human EPS15R aa 1-100 (N terminal). The exact sequence is proprietary. Database link: Q9UBC2
ポジティブ・コントロール	HeLa, 293T and SHSY5Y cell lysates; A431 cells.
特記事項	This product is a recombinant monoclonal antibody, which offers several advantages including: <ul style="list-style-type: none">- High batch-to-batch consistency and reproducibility- Improved sensitivity and specificity- Long-term security of supply- Animal-free production For more information see here . Our RabMAb [®] technology is a patented hybridoma-based technology for making rabbit monoclonal antibodies. For details on our patents, please refer to RabMAb[®] patents .

製品の特性

製品の状態	Liquid
保存方法	Shipped at 4°C. Upon delivery aliquot and store at -20°C. Avoid freeze / thaw cycles.
バッファー	pH: 7.20 Preservative: 0.05% Sodium azide Constituents: 0.1% BSA, 40% Glycerol (glycerin, glycerine), 9.85% Tris glycine, 50% Tissue culture supernatant
精製度	Protein A purified
ポリ/モノ	モノクローナル

クローン名 EP1146Y

アイソタイプ IgG

アプリケーション

The Abpromise guarantee Abpromise保証は、次のテスト済みアプリケーションにおけるab76004の使用に適用されます
アプリケーションノートには、推奨の開始希釈率がありますが、適切な希釈率につきましてはご検討ください。

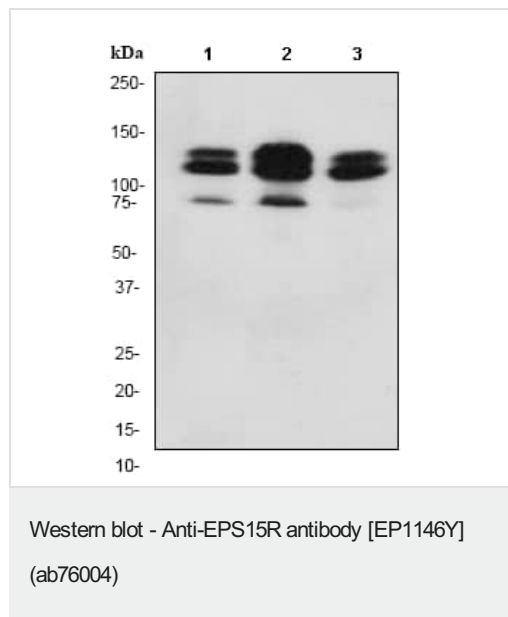
アプリケーション	Abreviews	特記事項
WB		1/10000 - 1/20000. Predicted molecular weight: 94 kDa.

追加情報 Is unsuitable for Flow Cyt, ICC/IF, IHC-P or IP.

ターゲット情報

機能	Seems to be a constitutive component of clathrin-coated pits that is required for receptor-mediated endocytosis. Involved in endocytosis of integrin beta-1 (ITGB1) and transferrin receptor (TFR); internalization of ITGB1 as DAB2-dependent cargo but not TFR seems to require association with DAB2.
配列類似性	Contains 1 EF-hand domain. Contains 3 EH domains.
翻訳後修飾	Phosphorylated on tyrosine residues by EGFR.
細胞内局在	Cell membrane. Nucleus. Membrane > coated pit. Localized to plasma membrane coated pits.

画像



All lanes : Anti-EPS15R antibody [EP1146Y] (ab76004) at 1/20000 dilution

Lane 1 : HeLa cell lysates

Lane 2 : 293T cell lysates

Lane 3 : SHSY5Y cell lysates

Lysates/proteins at 10 µg per lane.

Secondary


All lanes : goat anti-rabbit HRP at 1/2000 dilution

Predicted band size: 94 kDa

Observed band size: 108,125,76 kDa

There are three isoforms with MW at 125, 108 and 76 kDa respectively.

Why choose a recombinant antibody?



Research with confidence
Consistent and reproducible results

Long-term and scalable supply
Recombinant technology

Success from the first experiment
Confirmed specificity

Ethical standards compliant
Animal-free production

Anti-EPS15R antibody [EP1146Y] (ab76004)

Please note: All products are "FOR RESEARCH USE ONLY. NOT FOR USE IN DIAGNOSTIC PROCEDURES"

Our Abpromise to you: Quality guaranteed and expert technical support

- Replacement or refund for products not performing as stated on the datasheet
- Valid for 12 months from date of delivery
- Response to your inquiry within 24 hours
- We provide support in Chinese, English, French, German, Japanese and Spanish
- Extensive multi-media technical resources to help you
- We investigate all quality concerns to ensure our products perform to the highest standards

If the product does not perform as described on this datasheet, we will offer a refund or replacement. For full details of the Abpromise, please visit <https://www.abcam.co.jp/abpromise> or contact our technical team.

Terms and conditions

- Guarantee only valid for products bought direct from Abcam or one of our authorized distributors