


Anti-Eph receptor B1 + Eph receptor B2 (phospho Y594 + Y596) antibody ab61791

★★★★★ [4 Abreviews](#) [21 References](#) [画像数 4](#)

製品の概要

製品名	Anti-Eph receptor B1 + Eph receptor B2 (phospho Y594 + Y596) antibody
製品の詳細	Rabbit polyclonal to Eph receptor B1 + Eph receptor B2 (phospho Y594 + Y596)
由来種	Rabbit
特異性	ab61791 detects endogenous levels of EPHB1/2 only when phosphorylated at tyrosine 594 and tyrosine 596.
アプリケーション	適用あり: WB, ICC/IF
種交差性	交差種: Human 交差が予測される動物種: Mouse, Rat 
免疫原	Synthetic peptide corresponding to Human Eph receptor B1 + Eph receptor B2 (phospho Y594 + Y596). Database link: P54763-3
ポジティブ・コントロール	Extracts from HepG2 cells, HuvEc cells.
特記事項	<p>The Life Science industry has been in the grips of a reproducibility crisis for a number of years. Abcam is leading the way in addressing this with our range of recombinant monoclonal antibodies and knockout edited cell lines for gold-standard validation. Please check that this product meets your needs before purchasing.</p> <p>If you have any questions, special requirements or concerns, please send us an inquiry and/or contact our Support team ahead of purchase. Recommended alternatives for this product can be found below, along with publications, customer reviews and Q&As</p>

製品の特性

製品の状態	Liquid
保存方法	Shipped at 4°C. Upon delivery aliquot and store at -20°C. Avoid freeze / thaw cycles.
バッファー	pH: 7.40 Preservative: 0.02% Sodium azide Constituents: PBS, 50% Glycerol, 0.87% Sodium chloride
精製度	Immunogen affinity purified
特記事項 (精製)	The antibody was affinity-purified from rabbit antiserum by affinity-chromatography using epitope-

specific phosphopeptide. The antibody against non-phosphopeptide was removed by chromatography using non-phosphopeptide corresponding to the phosphorylation site.

ポリ/モノ

ポリクローナル

アイソタイプ

IgG

アプリケーション

The Abpromise guarantee Abpromise保証は、次のテスト済みアプリケーションにおけるab61791の使用に適用されます
アプリケーションノートには、推奨の開始希釈率がありますが、適切な希釈率につきましてはご検討ください。

アプリケーション	Abreviews	特記事項
WB	★★★★★ (1)	1/500 - 1/1000. Detects a band of approximately 110 kDa (predicted molecular weight: 110 kDa).
ICC/IF	★★★★★ (2)	1/500 - 1/1000.

ターゲット情報

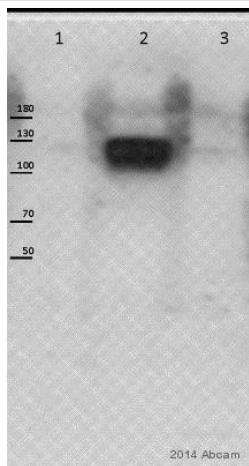
関連性

Ephrin receptors bind members of the ephrin ligand family. They are divided into 2 groups based on the similarity of their extracellular domain sequences and their affinities for binding ephrin-A and ephrin-B ligands. They make up the largest subgroup of the receptor tyrosine kinase (RTK) family. Eph receptor B1 (EphB1) and Eph receptor B2 (EphB2) are receptors for ephrin-B family members. Developing and adult neural tissue express nearly all of the Ephrin receptors and ephrin ligands. Ephrins and ephrin receptors also play a significant role in angiogenesis. EphB2 acts as a tumor suppressor.

細胞内局在

Membrane; Single-pass type I membrane protein.

画像



Western blot - Anti-Eph receptor B1 + Eph receptor B2 (phospho Y594 + Y596) antibody (ab61791)

This image is courtesy of an Abreview submitted by Thomas Jungas

All lanes : Anti-Eph receptor B1 + Eph receptor B2 (phospho Y594 + Y596) antibody (ab61791) at 1/1000 dilution

Lane 1 : HeLa whole cell lysate

Lane 2 : HeLa whole cell lysate - overexpressing EphB2

Lane 3 : HeLa whole cell lysate - overexpressing EphB2-kinase dead (K661R)

Lysates/proteins at 100000 cells per lane.

Secondary

All lanes : HRP-conjugated goat anti-rabbit IgG monoclonal at 1/5000 dilution

Developed using the ECL technique.

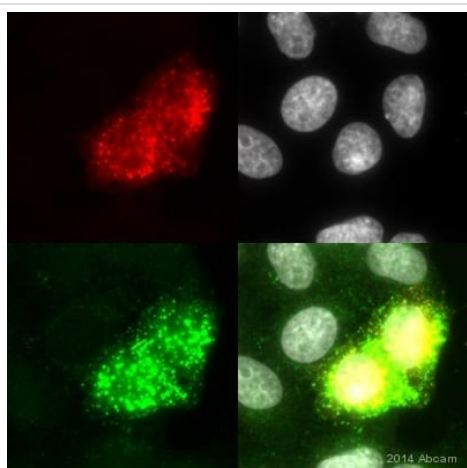
Performed under reducing conditions.

Predicted band size: 110 kDa

Observed band size: 110 kDa

Exposure time: 5 minutes

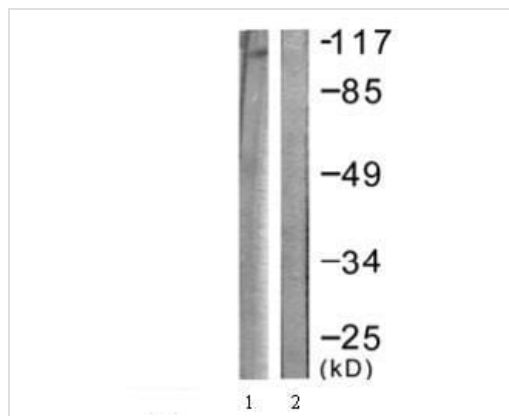
All cells were stimulated with preclustered ephrinb1-Fc chimeric protein.



Immunocytochemistry/ Immunofluorescence - Anti-Eph receptor B1 + Eph receptor B2 (phospho Y594 + Y596) antibody (ab61791)

This image is courtesy of an Abreview submitted by Thomas Jungas

ab61791 staining Eph receptor B1 + Eph receptor B2 (phospho Y594) in HeLa cells (overexpressing EphB2 and stimulated for 20 minutes with preclustered efnb1-Fc chimeric protein) by ICC/IF (Immunocytochemistry/immunofluorescence). Cells were fixed with paraformaldehyde, permeabilized with 0.1% Triton X-100 and blocked with 1% BSA for 30 minutes at 25°C. Samples were incubated with primary antibody (1/100 in PBS + 1% BSA + 0.1% Triton X-100) for 2 hour at 25°C. An Alexa Fluor® 488-conjugated donkey anti-rabbit IgG polyclonal (1/300) was used as the secondary antibody. Red - anti-EphB2 (goat), Grey - DAPI, Green - ab61791.



Western blot - Anti-Eph receptor B1 + Eph receptor B2 (phospho Y594 + Y596) antibody (ab61791)

All lanes : Anti-Eph receptor B1 + Eph receptor B2 (phospho Y594 + Y596) antibody (ab61791) at 1/500 dilution

Lane 1 : Extracts from HepG2 cells

Lane 2 : Extracts from HepG2 cells with the immunising phosphopeptide

Predicted band size: 110 kDa

Observed band size: 110 kDa



Immunocytochemistry/ Immunofluorescence - Anti-Eph receptor B1 + Eph receptor B2 (phospho Y594 + Y596) antibody (ab61791)

Immunofluorescence analysis of HuvEc cells, using ab61791 at 1/500-1/1000 dilution with (+) or without (-) immunising phosphopeptide.

Please note: All products are "FOR RESEARCH USE ONLY. NOT FOR USE IN DIAGNOSTIC PROCEDURES"

Our Abpromise to you: Quality guaranteed and expert technical support

- Replacement or refund for products not performing as stated on the datasheet
- Valid for 12 months from date of delivery
- Response to your inquiry within 24 hours
- We provide support in Chinese, English, French, German, Japanese and Spanish
- Extensive multi-media technical resources to help you
- We investigate all quality concerns to ensure our products perform to the highest standards

If the product does not perform as described on this datasheet, we will offer a refund or replacement. For full details of the Abpromise, please visit <https://www.abcam.co.jp/abpromise> or contact our technical team.

Terms and conditions

- Guarantee only valid for products bought direct from Abcam or one of our authorized distributors