


# Anti-Eph receptor A3 antibody ab110465

[1 Abreviews](#) [1 References](#) [画像数 1](#)

### 製品の概要

---

製品名	Anti-Eph receptor A3 antibody
製品の詳細	Rabbit polyclonal to Eph receptor A3
由来種	Rabbit
アプリケーション	<b>適用あり:</b> WB
種交差性	<b>交差種:</b> Human <b>交差が予測される動物種:</b> Mouse, Rat 
免疫原	A synthesized peptide derived from an internal region of Human Eph receptor A3 (UniProt ID: P29320).
ポジティブ・コントロール	Extracts from 293 cells.
特記事項	<p>The Life Science industry has been in the grips of a reproducibility crisis for a number of years. Abcam is leading the way in addressing this with our range of recombinant monoclonal antibodies and knockout edited cell lines for gold-standard validation. Please check that this product meets your needs before purchasing.</p> <p>If you have any questions, special requirements or concerns, please send us an inquiry and/or contact our Support team ahead of purchase. Recommended alternatives for this product can be found below, along with publications, customer reviews and Q&amp;As</p>

### 製品の特性

---

製品の状態	Liquid
保存方法	Shipped at 4°C. Store at -20°C. Stable for 12 months at -20°C.
バッファー	pH: 7.40 Preservative: 0.02% Sodium azide Constituents: PBS, 0.88% Sodium chloride, 50% Glycerol (glycerin, glycerine)
精製度	Immunogen affinity purified
特記事項(精製)	ab110465 was affinity purified from rabbit antiserum by affinity chromatography using epitope specific immunogen.
ポリモノ	ポリクローナル
アイソタイプ	IgG

## アプリケーション

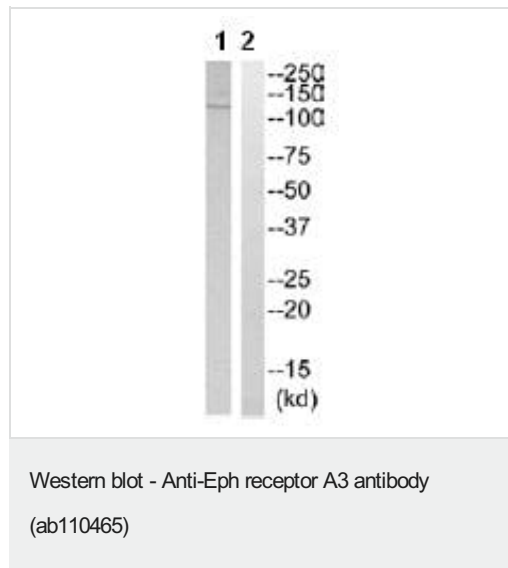
**The Abpromise guarantee** Abpromise保証は、次のテスト済みアプリケーションにおけるab110465の使用に適用されず  
アプリケーションノートには、推奨の開始希釈率がありますが、適切な希釈率につきましてはご検討ください。

アプリケーション	Abreviews	特記事項
WB		1/500 - 1/1000. Predicted molecular weight: 110 kDa.

## ターゲット情報

機能	Receptor for members of the ephrin-A family. Binds to ephrin-A2, -A3, -A4 and -A5. Could play a role in lymphoid function.
組織特異性	Widely expressed. Highest level in placenta.
関連疾患	Defects in EPHA3 may be a cause of colorectal cancer (CRC) [MIM:114500].
配列類似性	Belongs to the protein kinase superfamily. Tyr protein kinase family. Ephrin receptor subfamily. Contains 2 fibronectin type-III domains. Contains 1 protein kinase domain. Contains 1 SAM (sterile alpha motif) domain.
細胞内局在	Secreted and Cell membrane.

## 画像



**All lanes** : Anti-Eph receptor A3 antibody (ab110465) at 1/500 dilution

**Lane 1** : Extracts from 293 cells

**Lane 2** : Extracts from 293 cells, treated with the synthesized peptide

Lysates/proteins at 30 µg per lane.

**Predicted band size:** 110 kDa

**Please note:** All products are "FOR RESEARCH USE ONLY. NOT FOR USE IN DIAGNOSTIC PROCEDURES"

## Our Abpromise to you: Quality guaranteed and expert technical support

- Replacement or refund for products not performing as stated on the datasheet
- Valid for 12 months from date of delivery
- Response to your inquiry within 24 hours

- We provide support in Chinese, English, French, German, Japanese and Spanish
- Extensive multi-media technical resources to help you
- We investigate all quality concerns to ensure our products perform to the highest standards

If the product does not perform as described on this datasheet, we will offer a refund or replacement. For full details of the Abpromise, please visit <https://www.abcam.co.jp/abpromise> or contact our technical team.

### **Terms and conditions**

---

- Guarantee only valid for products bought direct from Abcam or one of our authorized distributors