


Anti-Eph receptor A2+A3+A4 (phospho Y588 + Y596) antibody ab62256

★★★★☆ [1 Abreviews](#) [6 References](#) [画像数 1](#)

製品の概要

製品名	Anti-Eph receptor A2+A3+A4 (phospho Y588 + Y596) antibody
製品の詳細	Rabbit polyclonal to Eph receptor A2+A3+A4 (phospho Y588 + Y596)
由来種	Rabbit
アプリケーション	適用あり: ICC/IF
種交差性	交差種: Human 交差が予測される動物種: Mouse 
免疫原	Synthetic peptide corresponding to Human Eph receptor A2+A3+A4 aa 550-650 (phospho Y588 + Y596).
特記事項	<p>The Life Science industry has been in the grips of a reproducibility crisis for a number of years. Abcam is leading the way in addressing this with our range of recombinant monoclonal antibodies and knockout edited cell lines for gold-standard validation. Please check that this product meets your needs before purchasing.</p> <p>If you have any questions, special requirements or concerns, please send us an inquiry and/or contact our Support team ahead of purchase. Recommended alternatives for this product can be found below, along with publications, customer reviews and Q&As</p>

製品の特性

製品の状態	Liquid
保存方法	Shipped at 4°C. Store at -20°C. Stable for 12 months at -20°C.
バッファー	pH: 7.40 Preservative: 0.02% Sodium azide Constituents: PBS, 50% Glycerol (glycerin, glycerine), 0.87% Sodium chloride
精製度	Immunogen affinity purified
特記事項(精製)	ab62256 was affinity-purified from rabbit antiserum by affinity-chromatography using epitope-specific phosphopeptide. The antibody against non-phosphopeptide was removed by chromatography using non-phosphopeptide corresponding to the phosphorylation site.
ポリ/モノ	ポリクローナル
アイソタイプ	IgG

アプリケーション

The Abpromise guarantee Abpromise保証は、次のテスト済みアプリケーションにおけるab62256の使用に適用されず
アプリケーションノートには、推奨の開始希釈率がありますが、適切な希釈率につきましてはご検討ください。

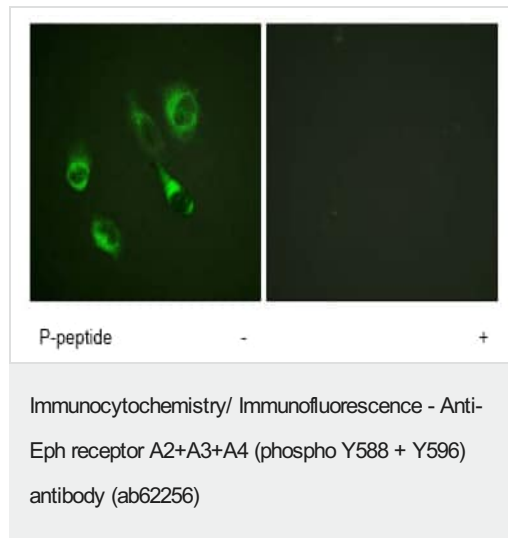
アプリケーション	Abreviews	特記事項
ICC/IF	★★★★★ (1)	1/500 - 1/1000.

ターゲット情報

関連性 Eph receptor A2 is the receptor for members of the ephrin-A family. It binds to ephrin-A1, -A3, -A4 and -A5. Eph receptor A3 is also a receptor for members of the ephrin-A family. It binds to ephrin-A2, -A3, -A4 and -A5 and is thought to play a role in lymphoid function. Eph receptor A4 is a receptor for members of the ephrin-A family. It binds to ephrin-A1, -A4 and -A5. It binds more poorly to ephrin-A2 and -A3. It may play a role in a signal transduction process involved in hindbrain pattern formation.

細胞内局在 Cell Membrane

画像



ab62256 at 1/500 - 1/1000 dilution staining Eph receptor A2+A3+A4 in HeLa cells by Immunofluorescence, in the absence or presence of the immunising peptide.

Please note: All products are "FOR RESEARCH USE ONLY. NOT FOR USE IN DIAGNOSTIC PROCEDURES"

Our Abpromise to you: Quality guaranteed and expert technical support

- Replacement or refund for products not performing as stated on the datasheet
- Valid for 12 months from date of delivery
- Response to your inquiry within 24 hours
- We provide support in Chinese, English, French, German, Japanese and Spanish

- Extensive multi-media technical resources to help you
- We investigate all quality concerns to ensure our products perform to the highest standards

If the product does not perform as described on this datasheet, we will offer a refund or replacement. For full details of the Abpromise, please visit <https://www.abcam.co.jp/abpromise> or contact our technical team.

Terms and conditions

- Guarantee only valid for products bought direct from Abcam or one of our authorized distributors