

Anti-Eph receptor A2 antibody [Ka-5H5] ab59551

画像数 2

製品の概要

製品名	Anti-Eph receptor A2 antibody [Ka-5H5]
製品の詳細	Mouse monoclonal [Ka-5H5] to Eph receptor A2
由来種	Mouse
特異性	ab59551 recognises the complete native EphA2 protein expressed on transfected mammalian cells.
アプリケーション	適用あり: Flow Cyt, ICC/IF
種交差性	交差種: Human, Recombinant fragment
免疫原	cDNA encoding human EphA2.
特記事項	<p>The Life Science industry has been in the grips of a reproducibility crisis for a number of years. Abcam is leading the way in addressing this with our range of recombinant monoclonal antibodies and knockout edited cell lines for gold-standard validation. Please check that this product meets your needs before purchasing.</p> <p>If you have any questions, special requirements or concerns, please send us an inquiry and/or contact our Support team ahead of purchase. Recommended alternatives for this product can be found below, along with publications, customer reviews and Q&As</p>

製品の特性

製品の状態	Liquid
保存方法	Shipped at 4°C. Store at +4°C short term (1-2 weeks). Upon delivery aliquot. Store at -20°C long term.
バッファー	pH: 7.20 Constituent: PBS
精製度	Protein G purified
ポリ/モノ	モノクローナル
クローン名	Ka-5H5
アイソタイプ	IgG1

アプリケーション

The Abpromise guarantee Abpromise保証は、次のテスト済みアプリケーションにおけるab59551の使用に適用されます

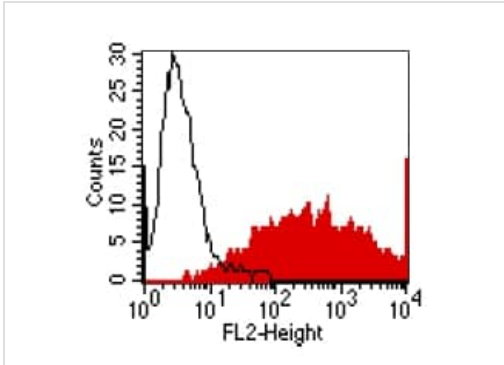
アプリケーションノートには、推奨の開始希釈率がありますが、適切な希釈率につきましてはご検討ください。

アプリケーション	Abreviews	特記事項
Flow Cyt		Use 1.2µg for 10 ⁶ cells. ab170190 - Mouse monoclonal IgG1, is suitable for use as an isotype control with this antibody.
ICC/IF		Use 1µg for 10 ⁶ cells.

ターゲット情報

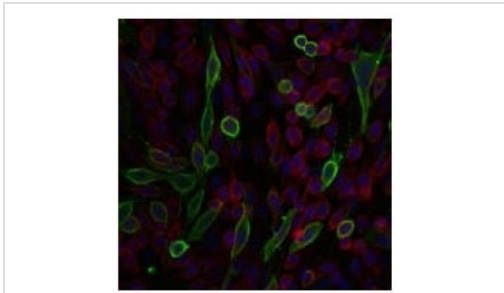
機能	Receptor for members of the ephrin-A family. Binds to ephrin-A1, -A3, -A4 and -A5. Plays an important role in angiogenesis and tumor neovascularization. The recruitment of VAV2, VAV3 and PI3-kinase p85 subunit by phosphorylated EPHA2 is critical for EFNA1-induced RAC1 GTPase activation and vascular endothelial cell migration and assembly (By similarity). Induces apoptosis in a p53/TP53-independent, caspase-8-dependent manner.
組織特異性	Expressed in brain and glioma tissue and glioma cell lines (at protein level). Expressed most highly in tissues that contain a high proportion of epithelial cells, e.g., skin, intestine, lung, and ovary.
関連疾患	Genetic variations in EPHA2 are the cause of susceptibility to cataract cortical age-related type 2 (ARCC2) [MIM:613020]. A developmental punctate opacity common in the cortex and present in most lenses. The cataract is white or cerulean, increases in number with age, but rarely affects vision. Defects in EPHA2 are the cause of cataract posterior polar type 1 (CTPP1) [MIM:116600]. A subcapsular opacity, usually disk-shaped, located at the back of the lens. It can have a marked effect on visual acuity.
配列類似性	Belongs to the protein kinase superfamily. Tyr protein kinase family. Ephrin receptor subfamily. Contains 2 fibronectin type-III domains. Contains 1 protein kinase domain. Contains 1 SAM (sterile alpha motif) domain.
翻訳後修飾	Activated by EFNA1 via tyrosine phosphorylation. Phosphorylated residues Tyr-588 and Tyr-594 are required for binding VAV2 and VAV3 while phosphorylated residues Tyr-735 and Tyr-930 are required for binding PI3-kinase p85 subunit. These phosphorylated residues are critical for recruitment of VAV2 and VAV3 and PI3-kinase p85 subunit which transduce downstream signaling to activate RAC1 GTPase and endothelial cell migration. They also play a critical role in transducing EPHA2 signaling in vascular endothelial cells during tumor angiogenesis.
細胞内局在	Membrane.

画像



Flow Cytometry - Anti-Eph receptor A2 antibody
[Ka-5H5] (ab59551)

FACS analysis of BOSC23 cells using ab59551 at $1.2 \mu\text{g}/10^6$ cells. BOSC23 cells were transiently trans-fected with an expression vector encoding either EphA2 (red curve) or an irrelevant protein (control transfectant). Binding of ab59551 was detected with a PE-conjugated secondary antibody.



Immunocytochemistry/ Immunofluorescence - Anti-Eph receptor A2 antibody [Ka-5H5] (ab59551)

Spectral Confocal Microscopy of CHO cells using ab59551 at $1 \mu\text{g}/10^6$ cells. CHO cells were transiently transfected with an expression vector encoding EphA2. Binding of ab59551 was visualized with a FITC-conjugated secondary antibody (green). Actin filaments are labeled with Alexa Fluor-555 Phalloidin (red). Cell nuclei are stained with DAPI (blue).

Please note: All products are "FOR RESEARCH USE ONLY. NOT FOR USE IN DIAGNOSTIC PROCEDURES"

Our Abpromise to you: Quality guaranteed and expert technical support

- Replacement or refund for products not performing as stated on the datasheet
- Valid for 12 months from date of delivery
- Response to your inquiry within 24 hours
- We provide support in Chinese, English, French, German, Japanese and Spanish
- Extensive multi-media technical resources to help you
- We investigate all quality concerns to ensure our products perform to the highest standards

If the product does not perform as described on this datasheet, we will offer a refund or replacement. For full details of the Abpromise, please visit <https://www.abcam.co.jp/abpromise> or contact our technical team.

Terms and conditions

- Guarantee only valid for products bought direct from Abcam or one of our authorized distributors