

Anti-EpCAM antibody [HEA125], prediluted ab46714

3 References [画像数 1](#)

製品の概要

製品名	Anti-EpCAM antibody [HEA125], prediluted
製品の詳細	Mouse monoclonal [HEA125] to EpCAM, prediluted
由来種	Mouse
アプリケーション	適用あり: ICC/IF
種交差性	交差種: Human
免疫原	Tissue, cells or virus corresponding to Human EpCAM.
ポジティブ・コントロール	ICC/IF: HepG2 cells.
特記事項	

ab46714 reacts intensely with all carcinomas and metastases derived from the intestinal tract, stomach, pancreas, liver, lung, breast, ovary, thyroid gland, kidney, bladder, prostate. Stratified squamous epithelia usually stain less intensely than adenocarcinoma. The antibody is suitable for differentiation between carcinoma and non-carcinoma. Keratinizing areas of a tumour mass usually remain unstained, as do sarcoma, lymphoma, melanoma and neurogenic tumours.

The Life Science industry has been in the grips of a reproducibility crisis for a number of years. Abcam is leading the way in addressing this with our range of recombinant monoclonal antibodies and knockout edited cell lines for gold-standard validation. Please check that this product meets your needs before purchasing.

If you have any questions, special requirements or concerns, please send us an inquiry and/or contact our Support team ahead of purchase. Recommended alternatives for this product can be found below, along with publications, customer reviews and Q&As

製品の特性

製品の状態	Liquid
保存方法	Shipped at 4°C. Store at +4°C short term (1-2 weeks). Store at -20°C or -80°C. Avoid freeze / thaw cycle.
バッファー	pH: 7.30 Preservative: 0.09% Sodium azide Constituents: PBS, BSA
精製度	Protein G purified
一次抗体 備考	ab46714 reacts intensely with all carcinomas and metastases derived from the intestinal tract,

stomach, pancreas, liver, lung, breast, ovary, thyroid gland, kidney, bladder, prostate. Stratified squamous epithelia usually stain less intensely than adenocarcinoma. The antibody is suitable for differentiation between carcinoma and non-carcinoma. Keratinizing areas of a tumour mass usually remain unstained, as do sarcoma, lymphoma, melanoma and neurogenic tumours.

ポリ/モノ	モノクローナル
クローン名	HEA125
アイソタイプ	IgG1

アプリケーション

The Abpromise guarantee Abpromise保証は、次のテスト済みアプリケーションにおけるab46714の使用に適用されます
 アプリケーションノートには、推奨の開始希釈率がありますが、適切な希釈率につきましてはご検討ください。

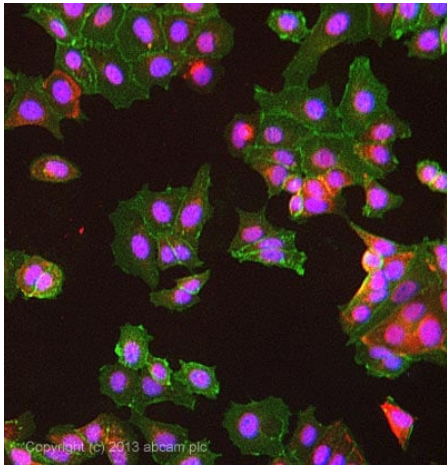
アプリケーション	Abreviews	特記事項
ICC/IF		Use at an assay dependent concentration.

ターゲット情報

機能	May act as a physical homophilic interaction molecule between intestinal epithelial cells (IECs) and intraepithelial lymphocytes (IELs) at the mucosal epithelium for providing immunological barrier as a first line of defense against mucosal infection. Plays a role in embryonic stem cells proliferation and differentiation. Up-regulates the expression of FABP5, MYC and cyclins A and E.
組織特異性	Highly and selectively expressed by undifferentiated rather than differentiated embryonic stem cells (ESC). Levels rapidly diminish as soon as ESC's differentiate (at protein levels). Expressed in almost all epithelial cell membranes but not on mesodermal or neural cell membranes. Found on the surface of adenocarcinoma.
関連疾患	Defects in EPCAM are the cause of diarrhea type 5 (DIAR5) [MIM:613217]. It is an intractable diarrhea of infancy characterized by villous atrophy and absence of inflammation, with intestinal epithelial cell dysplasia manifesting as focal epithelial tufts in the duodenum and jejunum. Defects in EPCAM are a cause of hereditary non-polyposis colorectal cancer type 8 (HNPCC8) [MIM:613244]. HNPCC is a disease associated with marked increase in cancer susceptibility. It is characterized by a familial predisposition to early-onset colorectal carcinoma (CRC) and extra-colonic tumors of the gastrointestinal, urological and female reproductive tracts. HNPCC is reported to be the most common form of inherited colorectal cancer in the Western world. Clinically, HNPCC is often divided into two subgroups. Type I is characterized by hereditary predisposition to colorectal cancer, a young age of onset, and carcinoma observed in the proximal colon. Type II is characterized by increased risk for cancers in certain tissues such as the uterus, ovary, breast, stomach, small intestine, skin, and larynx in addition to the colon. Diagnosis of classical HNPCC is based on the Amsterdam criteria: 3 or more relatives affected by colorectal cancer, one a first degree relative of the other two; 2 or more generation affected; 1 or more colorectal cancers presenting before 50 years of age; exclusion of hereditary polyposis syndromes. The term 'suspected HNPCC' or 'incomplete HNPCC' can be used to describe families who do not or only partially fulfill the Amsterdam criteria, but in whom a genetic basis for colon cancer is strongly suspected. Note=HNPCC8 results from heterozygous deletion of 3-prime exons of EPCAM and intergenic regions directly upstream of MSH2, resulting in transcriptional read-through and epigenetic silencing of MSH2 in tissues expressing EPCAM.

配列類似性	Belongs to the EPCAM family. Contains 1 thyroglobulin type-1 domain.
翻訳後修飾	Hyperglycosylated in carcinoma tissue as compared with autologous normal epithelia. Glycosylation at Asn-198 is crucial for protein stability.
細胞内局在	Lateral cell membrane. Cell junction > tight junction. Co-localizes with CLDN7 at the lateral cell membrane and tight junction.

画像



ICC/IF image of ab46714 stained HepG2 cells. The cells were 4% formaldehyde fixed (10 min) and then incubated in 1%BSA, 0.3M glycine in 0.1% PBS-Tween for 1h to permeabilise the cells and block non-specific protein-protein interactions. The cells were then incubated with the antibody ab46714 at 1µg/ml overnight at +4°C. The secondary antibody (green) was DyLight® 488 donkey anti-goat (**ab96931**) IgG (H+L) used at a 1/250 dilution for 1h. Alexa Fluor® 594 WGA was used to label plasma membranes (red) at a 1/200 dilution for 1h. DAPI was used to stain the cell nuclei (blue) at a concentration of 1.43µM.

Immunocytochemistry/ Immunofluorescence - Anti-EpCAM antibody [HEA125], prediluted (ab46714)

Please note: All products are "FOR RESEARCH USE ONLY. NOT FOR USE IN DIAGNOSTIC PROCEDURES"

Our Abpromise to you: Quality guaranteed and expert technical support

- Replacement or refund for products not performing as stated on the datasheet
- Valid for 12 months from date of delivery
- Response to your inquiry within 24 hours
- We provide support in Chinese, English, French, German, Japanese and Spanish
- Extensive multi-media technical resources to help you
- We investigate all quality concerns to ensure our products perform to the highest standards

If the product does not perform as described on this datasheet, we will offer a refund or replacement. For full details of the Abpromise, please visit <https://www.abcam.co.jp/abpromise> or contact our technical team.

Terms and conditions

- Guarantee only valid for products bought direct from Abcam or one of our authorized distributors