

Anti-EPB41L2 antibody ab99375

画像数 2

製品の概要

製品名	Anti-EPB41L2 antibody
製品の詳細	Rabbit polyclonal to EPB41L2
由来種	Rabbit
アプリケーション	適用あり: WB, IP
種交差性	交差種: Human 交差が予測される動物種: Chimpanzee, Gorilla, Orangutan 
免疫原	Synthetic peptide corresponding to Human EPB41L2 aa 100-150. Database link: NP_001422.1
ポジティブ・コントロール	HeLa whole cell lysate.
特記事項	<p>The Life Science industry has been in the grips of a reproducibility crisis for a number of years. Abcam is leading the way in addressing this with our range of recombinant monoclonal antibodies and knockout edited cell lines for gold-standard validation. Please check that this product meets your needs before purchasing.</p> <p>If you have any questions, special requirements or concerns, please send us an inquiry and/or contact our Support team ahead of purchase. Recommended alternatives for this product can be found below, along with publications, customer reviews and Q&As</p>

製品の特性

製品の状態	Liquid
保存方法	Shipped at 4°C. Upon delivery aliquot and store at -20°C. Avoid freeze / thaw cycles.
バッファー	pH: 6.8 Preservative: 0.09% Sodium azide Constituents: 0.1% BSA, Tris buffered saline
精製度	Immunogen affinity purified
ポリ/モノ	ポリクローナル
アイソタイプ	IgG

アプリケーション

The Abpromise guarantee

Abpromise保証は、次のテスト済みアプリケーションにおけるab99375の使用に適用されます

アプリケーションノートには、推奨の開始希釈率がありますが、適切な希釈率につきましてはご確認ください。

アプリケーション	Abreviews	特記事項
WB		1/2000 - 1/10000. Predicted molecular weight: 113 kDa.
IP		Use at 2-5 µg/mg of lysate.

ターゲット情報

組織特異性

Widely expressed.

配列類似性

Contains 1 FERM domain.

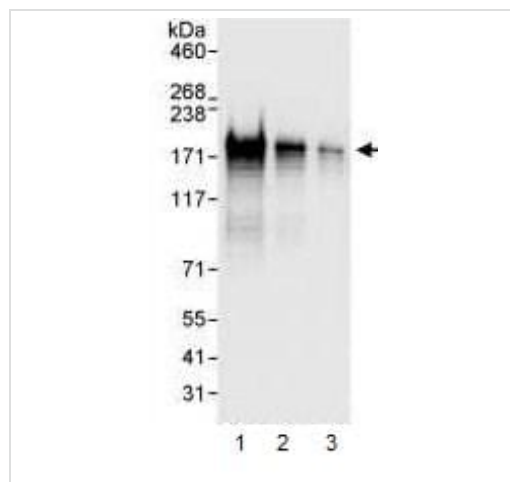
翻訳後修飾

Phosphorylated upon DNA damage, probably by ATM or ATR.

細胞内局在

Cytoplasm > cytoskeleton.

画像



Western blot - Anti-EPB41L2 antibody (ab99375)

All lanes : Anti-EPB41L2 antibody (ab99375) at 0.04 µg/ml

Lane 1 : HeLa whole cell lysate at 50 µg

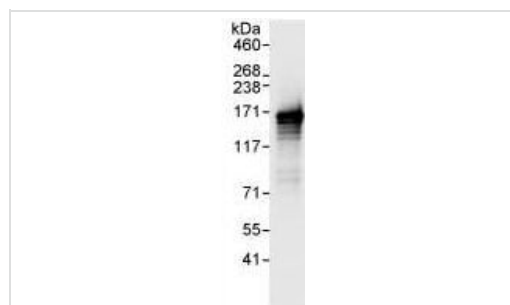
Lane 2 : HeLa whole cell lysate at 15 µg

Lane 3 : HeLa whole cell lysate at 5 µg

Developed using the ECL technique.

Predicted band size: 113 kDa

Exposure time: 10 seconds



Immunoprecipitation - Anti-EPB41L2 antibody (ab99375)

B>Immunoprecipitation: 1 mg of HeLa cell lysate

immunoprecipitated with ab99375 at 3 µg/mg lysate; 20% of immunoprecipitate loaded in lane

Western Blot: EPB41L2 antibody (ab99375) at 1 µg/ml

developed using the ECL technique

Exposure time : 10 seconds

Predicted band size : 113 kDa

Please note: All products are "FOR RESEARCH USE ONLY. NOT FOR USE IN DIAGNOSTIC PROCEDURES"

Our Abpromise to you: Quality guaranteed and expert technical support

- Replacement or refund for products not performing as stated on the datasheet
- Valid for 12 months from date of delivery
- Response to your inquiry within 24 hours

- We provide support in Chinese, English, French, German, Japanese and Spanish
- Extensive multi-media technical resources to help you
- We investigate all quality concerns to ensure our products perform to the highest standards

If the product does not perform as described on this datasheet, we will offer a refund or replacement. For full details of the Abpromise, please visit <https://www.abcam.co.jp/abpromise> or contact our technical team.

Terms and conditions

- Guarantee only valid for products bought direct from Abcam or one of our authorized distributors