


Anti-Epac1 antibody [EPR1672] ab109415

リコンビナント **RabMAb**

★★★★★ **2 Abreviews** **5 References** 画像数 3

製品の概要

製品名	Anti-Epac1 antibody [EPR1672]
製品の詳細	Rabbit monoclonal [EPR1672] to Epac1
由来種	Rabbit
アプリケーション	適用あり: WB, IHC-P 適用なし: Flow Cyt
種交差性	交差種: Human 交差が予測される動物種: Mouse, Rat 
免疫原	Synthetic peptide. This information is proprietary to Abcam and/or its suppliers.
ポジティブ・コントロール	HeLa, HepG2, Human heart and HUVEC lysates; Human kidney tissue
特記事項	This product is a recombinant monoclonal antibody, which offers several advantages including: <ul style="list-style-type: none"> - High batch-to-batch consistency and reproducibility - Improved sensitivity and specificity - Long-term security of supply - Animal-free production For more information see here . Our RabMAb [®] technology is a patented hybridoma-based technology for making rabbit monoclonal antibodies. For details on our patents, please refer to RabMAb[®] patents .

製品の特性

製品の状態	Liquid
保存方法	Shipped at 4°C. Store at -20°C. Stable for 12 months at -20°C.
バッファー	pH: 7.20 Preservative: 0.05% Sodium azide Constituents: 0.1% BSA, 40% Glycerol (glycerin, glycerine), 9.85% Tris glycine, 50% Tissue culture supernatant
精製度	Protein A purified
ポリ/モノ	モノクローナル
クローン名	EPR1672

アプリケーション

The Abpromise guarantee Abpromise保証は、 次のテスト済みアプリケーションにおけるab109415の使用に適用されます
アプリケーションノートには、推奨の開始希釈率がありますが、適切な希釈率につきましてはご確認ください。

アプリケーション	Abreviews	特記事項
WB	★★★★★ (1)	1/1000 - 1/10000. Predicted molecular weight: 104 kDa.
IHC-P		1/50 - 1/100. Perform heat mediated antigen retrieval with citrate buffer pH 6 before commencing with IHC staining protocol. Antigen retrieval is recommended.

追加情報

Is unsuitable for Flow Cyt.

ターゲット情報

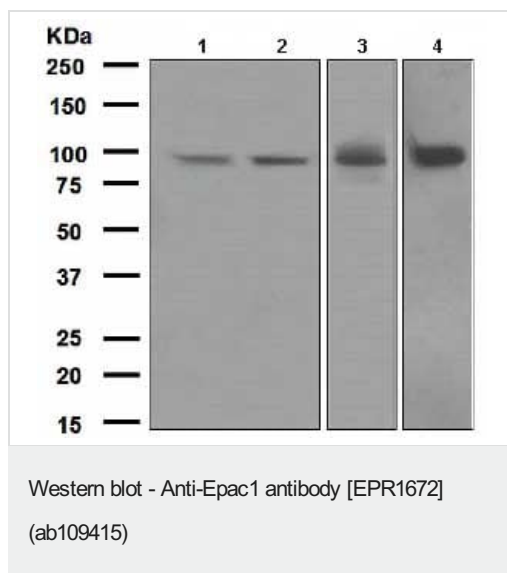
関連性

The activation of Rap1 by cAMP is independent of PKA and is mediated by recently discovered family of guanine nucleotide exchange factors (GEFs) called cAMP-GEFs or Epacs. The Epac signaling therefore represents a novel mechanism for cAMP signaling within the cAMP cascade. There are 2 members of the Epac family, Epac1 and Epac 2. Both proteins are multidomain proteins containing an autoinhibitory cAMP-binding domain that inhibits the catalytic region and a DEP domain (dishevelled, Egl-10 and pleckstrin homology domain) targeting the membrane anchors. EPAC2 has an additional cAMP-binding site in its N-terminus that binds cAMP with low affinity. EPAC1 mRNA is broadly expressed, with particularly high levels occurring in the thyroid, ovary, kidney and certain brain regions, whereas expression of EPAC2 mRNA appears to be restricted to the brain and adrenal glands. Epac 1 and Epac 2 also interact with light chain 2 (LC2) or MAP1A that serves as a scaffolding structure to stabilize the signal transduction complex. The Epac 1-selective antibodies were generated against unique antigenic sequences from near N-terminus and between RasGEFN and Ras GEF domains. The antibodies to Epac 1 are affinity purified over immobilized antigen based chromatography.

細胞内局在

Endomembrane system

画像



All lanes : Anti-Epac1 antibody [EPR1672] (ab109415) at 1/1000 dilution

Lane 1 : HeLa cell lysate

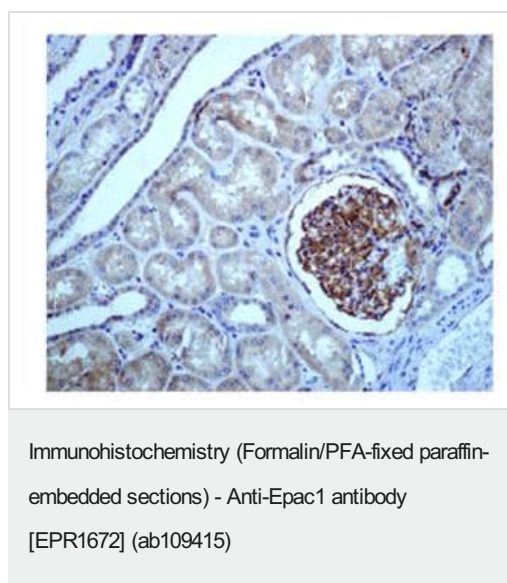
Lane 2 : HepG2 cell lysate

Lane 3 : Human heart lysate

Lane 4 : HUVEC cell lysate

Lysates/proteins at 10 µg per lane.

Predicted band size: 104 kDa



Immunohistochemical analysis of Epac1 in paraffin-embedded Human kidney tissue using ab109415 at 1/50 dilution.

Perform heat mediated antigen retrieval with citrate buffer pH 6 before commencing with IHC staining protocol.

Why choose a recombinant antibody?

Research with confidence
Consistent and reproducible results

Long-term and scalable supply
Recombinant technology

Success from the first experiment
Confirmed specificity

Ethical standards compliant
Animal-free production

Anti-Epac1 antibody [EPR1672] (ab109415)

Please note: All products are "FOR RESEARCH USE ONLY. NOT FOR USE IN DIAGNOSTIC PROCEDURES"

Our Abpromise to you: Quality guaranteed and expert technical support

- Replacement or refund for products not performing as stated on the datasheet
- Valid for 12 months from date of delivery
- Response to your inquiry within 24 hours

- We provide support in Chinese, English, French, German, Japanese and Spanish
- Extensive multi-media technical resources to help you
- We investigate all quality concerns to ensure our products perform to the highest standards

If the product does not perform as described on this datasheet, we will offer a refund or replacement. For full details of the Abpromise, please visit <https://www.abcam.co.jp/abpromise> or contact our technical team.

Terms and conditions

- Guarantee only valid for products bought direct from Abcam or one of our authorized distributors