

Anti-ENSA antibody ab125873

面格新?

医薬用外劇物

製品の概要

製品名	Anti-ENSA antibody
製品の詳細	Rabbit polyclonal to ENSA
由来種	Rabbit
アプリケーション	適用あり: WB, ICC/IF
種交差性	交差種: Human
免疫原	Recombinant fragment, corresponding to a region within amino acids 1-102 of Human ENSA (NP_004427).
ポジティブ・コントロール	A549 whole cell lysate HeLa whole cell lysate HCT116 whole cell lysate HeLa cells (methanol fixed)
特記事項	<p>The Life Science industry has been in the grips of a reproducibility crisis for a number of years. Abcam is leading the way in addressing this with our range of recombinant monoclonal antibodies and knockout edited cell lines for gold-standard validation. Please check that this product meets your needs before purchasing.</p> <p>If you have any questions, special requirements or concerns, please send us an inquiry and/or contact our Support team ahead of purchase. Recommended alternatives for this product can be found below, along with publications, customer reviews and Q&As</p>

製品の特性

製品の状態	Liquid
保存方法	Shipped at 4°C. Upon delivery aliquot and store at -20°C or -80°C. Avoid repeated freeze / thaw cycles.
バッファー	<p>pH: 7.00</p> <p>Preservative: 0.01% Thimerosal (merthiolate)</p> <p>Constituents: 78.99% PBS, 1% BSA, 20% Glycerol (glycerin, glycerine)</p>
精製度	Immunogen affinity purified
ポリ/モノ	ポリクローナル
アイソタイプ	IgG

アプリケーション

The Abpromise guarantee

Abpromise保証は、次のテスト済みアプリケーションにおけるab125873の使用に適用されます

アプリケーションノートには、推奨の開始希釈率がありますが、適切な希釈率につきましてはご確認ください。

アプリケーション	Abreviews	特記事項
WB		1/500 - 1/3000. Predicted molecular weight: 13 kDa.
ICC/IF		1/100 - 1/1000.

ターゲット情報

機能

Protein phosphatase inhibitor that specifically inhibits protein phosphatase 2A (PP2A) during mitosis. When phosphorylated at Ser-67 during mitosis, specifically interacts with PPP2R2D (PR55-delta) and inhibits its activity, leading to inactivation of PP2A, an essential condition to keep cyclin-B1-CDK1 activity high during M phase (By similarity). Also acts as a stimulator of insulin secretion by interacting with sulfonylurea receptor (ABCC8), thereby preventing sulfonylurea from binding to its receptor and reducing K(ATP) channel currents.

組織特異性

Widely expressed with high levels in skeletal muscle and brain and lower levels in the pancreas.

配列類似性

Belongs to the endosulfine family.

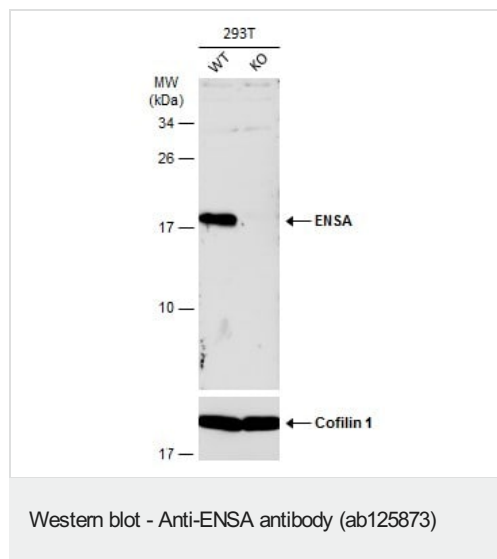
翻訳後修飾

Phosphorylation at Ser-67 by GWL during mitosis is essential for interaction with PPP2R2D (PR55-delta) and subsequent inactivation of PP2A (By similarity). Phosphorylated by PKA.

細胞内局在

Cytoplasm.

画像



All lanes : Anti-ENSA antibody (ab125873) at 1/500 dilution

Lane 1 : WT 293T cell extracts

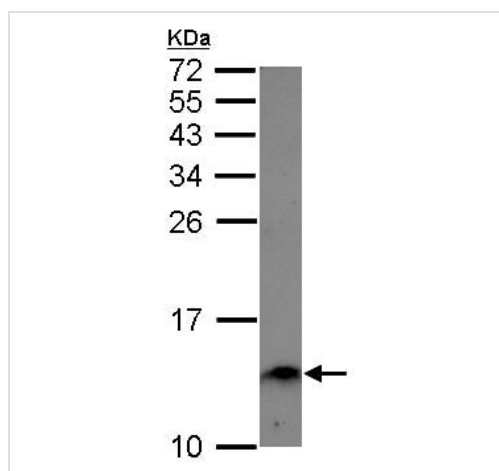
Lane 2 : ENSA Knockout 293T cell extracts

Lysates/proteins at 30 µg per lane.

Secondary

All lanes : HRP-conjugated anti-rabbit IgG

Predicted band size: 13 kDa

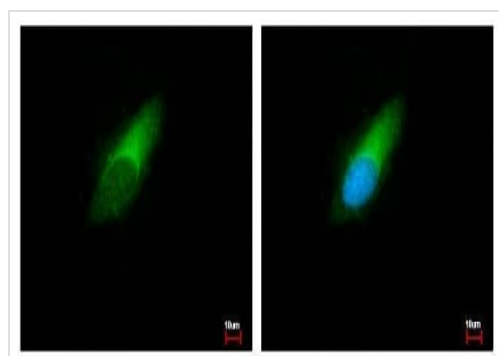


Western blot - Anti-ENSA antibody (ab125873)

Anti-ENSA antibody (ab125873) at 1/1000 dilution + A549 whole cell lysate at 30 µg

Predicted band size: 13 kDa

15% SDS PAGE



Immunocytochemistry/ Immunofluorescence - Anti-ENSA antibody (ab125873)

Methanol-fixed HeLa (human epithelial cell line from cervix adenocarcinoma) cells stained for ENSA (green) using ab125873 at 1/500 dilution in ICC/IF. Blue: Hoechst 33343 staining.

Please note: All products are "FOR RESEARCH USE ONLY. NOT FOR USE IN DIAGNOSTIC PROCEDURES"

Our Abpromise to you: Quality guaranteed and expert technical support

- Replacement or refund for products not performing as stated on the datasheet
- Valid for 12 months from date of delivery
- Response to your inquiry within 24 hours
- We provide support in Chinese, English, French, German, Japanese and Spanish
- Extensive multi-media technical resources to help you
- We investigate all quality concerns to ensure our products perform to the highest standards

If the product does not perform as described on this datasheet, we will offer a refund or replacement. For full details of the Abpromise,

please visit <https://www.abcam.co.jp/abpromise> or contact our technical team.

Terms and conditions

- Guarantee only valid for products bought direct from Abcam or one of our authorized distributors