

Anti-ENPP3/B10 antibody [NP4D6] ab90754

[2 References](#) [画像数 2](#)

製品の概要

製品名	Anti-ENPP3/B10 antibody [NP4D6]
製品の詳細	Mouse monoclonal [NP4D6] to ENPP3/B10
由来種	Mouse
特異性	The mouse monoclonal antibody NP4D6 reacts with CD203c, a transmembrane ectoenzyme expressed on basophils and mast cells, and overexpressed upon their activation.
アプリケーション	適用あり: Flow Cyt
種交差性	交差種: Human
免疫原	Tissue, cells or virus corresponding to Human ENPP3/B10. HEK-293 cells transfected with human ENPP3/B10 Database link: O14638
ポジティブ・コントロール	Flow Cyt: Human peripheral whole blood cells.
特記事項	<p>The Life Science industry has been in the grips of a reproducibility crisis for a number of years. Abcam is leading the way in addressing this with our range of recombinant monoclonal antibodies and knockout edited cell lines for gold-standard validation. Please check that this product meets your needs before purchasing.</p> <p>If you have any questions, special requirements or concerns, please send us an inquiry and/or contact our Support team ahead of purchase. Recommended alternatives for this product can be found below, along with publications, customer reviews and Q&As</p>

製品の特性

製品の状態	Liquid
保存方法	Shipped at 4°C. Upon delivery aliquot and store at -20°C. Avoid freeze / thaw cycles.
バッファー	pH: 7.40 Preservative: 0.097% Sodium azide Constituent: PBS
精製度	Protein A purified
特記事項(精製)	Purified from cell culture supernatant with > 95% purity (by SDS-PAGE)
ポリ/モノ	モノクローナル
クローン名	NP4D6

アプリケーション

The Abpromise guarantee **Abpromise保証は、次のテスト済みアプリケーションにおけるab90754の使用に適用されず**

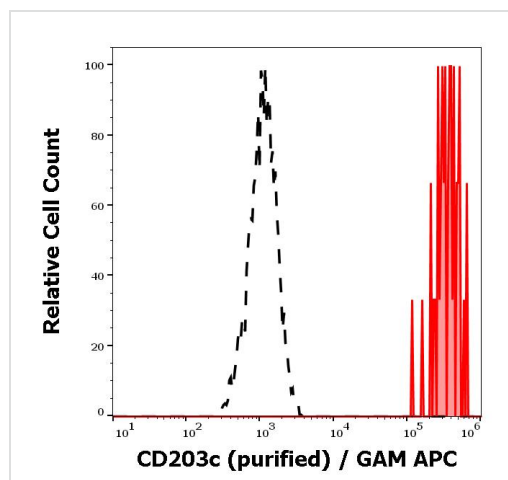
アプリケーションノートには、推奨の開始希釈率がありますが、適切な希釈率につきましてはご確認ください。

アプリケーション	Abreviews	特記事項
Flow Cyt		Use a concentration of 1 - 4 µg/ml.

ターゲット情報

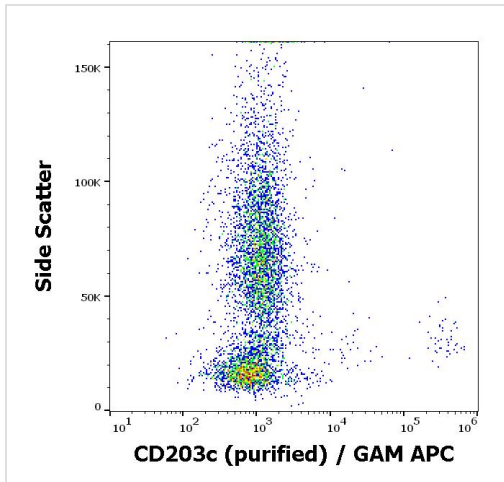
機能	Cleaves a variety of phosphodiester and phosphosulfate bonds including deoxynucleotides, nucleotide sugars, and NAD.
組織特異性	Expressed in bile ducts, prostate, uterus and colon. Exclusively expressed on basophils, mast cells and their progenitors.
配列類似性	Belongs to the nucleotide pyrophosphatase/phosphodiesterase family. Contains 2 SMB (somatomedin-B) domains.
翻訳後修飾	N-glycosylation is necessary for correct trafficking to the apical surface, but is not the apical targeting signal. It has been suggested that the active SMB domain may be permitted considerable disulfide bond heterogeneity or variability, thus two alternate disulfide patterns based on 3D structures are described with 1 disulfide bond conserved in both.
細胞内局在	Membrane. Secreted. Located to the apical surface in intestinal and kidney epithelial cells. Located to the cell surface of basophils, and to the apical plasma membrane of bile duct cells. Secreted in serum, and in lumen of epithelial cells.

画像



Separation of CD203c positive basophil granulocytes (red-filled) from neutrophil granulocytes (black-dashed) in flow cytometry analysis (surface staining) of IgE stimulated human peripheral whole blood using ab90754 2 µg/ml.

Flow Cytometry - Anti-ENPP3/B10 antibody
[NP4D6] (ab90754)



Flow cytometry surface staining pattern of IgE stimulated human peripheral whole blood stained using ab90754 at 2 µg/ml.

Flow Cytometry - Anti-ENPP3/B10 antibody
[NP4D6] (ab90754)

Please note: All products are "FOR RESEARCH USE ONLY. NOT FOR USE IN DIAGNOSTIC PROCEDURES"

Our Abpromise to you: Quality guaranteed and expert technical support

- Replacement or refund for products not performing as stated on the datasheet
- Valid for 12 months from date of delivery
- Response to your inquiry within 24 hours
- We provide support in Chinese, English, French, German, Japanese and Spanish
- Extensive multi-media technical resources to help you
- We investigate all quality concerns to ensure our products perform to the highest standards

If the product does not perform as described on this datasheet, we will offer a refund or replacement. For full details of the Abpromise, please visit <https://www.abcam.co.jp/abpromise> or contact our technical team.

Terms and conditions

- Guarantee only valid for products bought direct from Abcam or one of our authorized distributors