


Anti-Engrailed and Invected antibody [4D9] ab12454

★★★★★ [1 Abreviews](#) [12 References](#) [画像数 3](#)

製品の概要

製品名	Anti-Engrailed and Invected antibody [4D9]
製品の詳細	Mouse monoclonal [4D9] to Engrailed and Invected
由来種	Mouse
アプリケーション	適用あり: IHC - Wholemount
種交差性	交差種: Drosophila melanogaster 交差が予測される動物種: Chicken, Xenopus laevis, Zebrafish, Crayfish  非交差種: Mouse
免疫原	This product was produced with the following immunogens: Recombinant fragment. This information is proprietary to Abcam and/or its suppliers. Recombinant fragment. This information is proprietary to Abcam and/or its suppliers.
エピトープ	Epitope has been localized to residues 38-58 of the homeodomain.
特記事項	<p>This antibody clone is manufactured by Abcam. If you require a custom buffer formulation or conjugation for your experiments, please contact orders@abcam.com.</p> <p>The Life Science industry has been in the grips of a reproducibility crisis for a number of years. Abcam is leading the way in addressing this with our range of recombinant monoclonal antibodies and knockout edited cell lines for gold-standard validation. Please check that this product meets your needs before purchasing.</p> <p>If you have any questions, special requirements or concerns, please send us an inquiry and/or contact our Support team ahead of purchase. Recommended alternatives for this product can be found below, along with publications, customer reviews and Q&As</p>

製品の特性

製品の状態	Liquid
保存方法	Shipped at 4°C. Store at +4°C short term (1-2 weeks). Upon delivery aliquot. Store at -20°C or -80°C. Avoid freeze / thaw cycle.
バッファー	pH: 7.40 Preservative: 0.02% Sodium azide Constituent: PBS
精製度	Protein G purified

ポリ/モノ	モノクローナル
クローン名	4D9
ミエローマ	NS1
アイソタイプ	IgG1
軽鎖の種類	kappa

アプリケーション

The Abpromise guarantee Abpromise保証は、次のテスト済みアプリケーションにおけるab12454の使用に適用されます
アプリケーションノートには、推奨の開始希釈率がありますが、適切な希釈率につきましてはご検討ください。

アプリケーション	Abreviews	特記事項
IHC - Wholemout		1/200. Fix with 4% paraformaldehyde in PBS for 1 hour.

ターゲット情報

関連性 In Drosophila, the Engrailed gene plays an important role during development in segmentation, where it is required for the formation of posterior compartments. Expression studies have suggested that Engrailed may also function early in organizing the preblastoderm and later in neurogenesis. Engrailed encodes a homeodomain-containing protein that can function as a transcription factor. Invested is homologous to Engrailed and the gene lies adjacent to that for Engrailed. The function of Invested is unclear.

画像

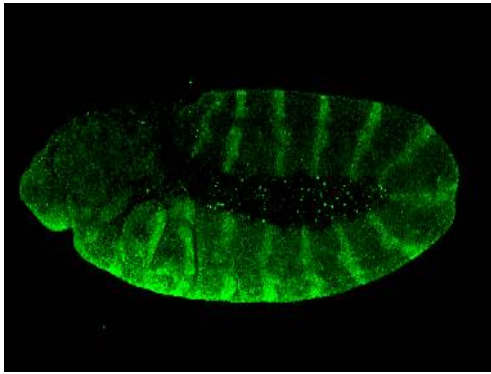


IHC - Wholemout - Anti-Engrailed and Invested antibody [4D9] (ab12454)

This image is courtesy of Dr Torsten Bossing at the University of Plymouth.

ab12454 used in immunohistochemistry at 1/200 on Drosophila embryos. The protocol used is available [here](#).

Briefly, embryos were bleached (5% Bleach) to dechorionate them, followed by fixation in PBS, 3.7% formaldehyde and n-Heptane, dehydration with Methanol, rehydration with PBT (PBS with 0.3% Tritone added) before antibody staining. Visualisation was with DAB.

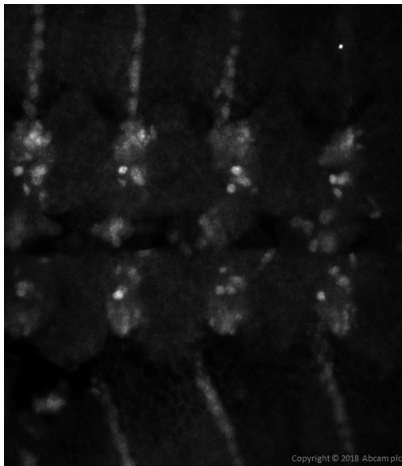


IHC - Wholemount - Anti-Engrailed and Invected antibody [4D9] (ab12454)

This image is courtesy of Dr Torsten Bossing at the University of Plymouth.

ab12454 used in immunofluorescence at 1/200 on Drosophila embryos. The protocol used is available [here](#).

Briefly, embryos were bleached (5% Bleach) to dechorionate them, followed by fixation in PBS, 3.7% formaldehyde and n-Heptane, dehydration with Methanol, rehydration with PBT (PBS with 0.3% Tritone added) before antibody staining.



IHC - Wholemount - Anti-Engrailed and Invected antibody [4D9] (ab12454)

This image is courtesy of Dr Torsten Bossing at the University of Plymouth.

ab12454 used in immunohistochemistry (Wholemount) at 1/200 dilution on Drosophila embryos. The protocol used is available [here](#).

Briefly, embryos were bleached (5% Bleach) to dechorionate them, followed by fixation in PBS, 3.7% formaldehyde and n-Heptane, dehydration with Methanol, rehydration with PBT (PBS with 0.3% Tritone added) before antibody staining. Visualisation was with DAB.

Please note: All products are "FOR RESEARCH USE ONLY. NOT FOR USE IN DIAGNOSTIC PROCEDURES"

Our Abpromise to you: Quality guaranteed and expert technical support

- Replacement or refund for products not performing as stated on the datasheet
- Valid for 12 months from date of delivery
- Response to your inquiry within 24 hours
- We provide support in Chinese, English, French, German, Japanese and Spanish
- Extensive multi-media technical resources to help you
- We investigate all quality concerns to ensure our products perform to the highest standards

If the product does not perform as described on this datasheet, we will offer a refund or replacement. For full details of the Abpromise, please visit <https://www.abcam.co.jp/abpromise> or contact our technical team.

Terms and conditions

- Guarantee only valid for products bought direct from Abcam or one of our authorized distributors