




# Anti-Endothelin B Receptor/ET-B antibody ab117529

★★★★★ [4 Abreviews](#) [35 References](#) [画像数 4](#)

### 製品の概要

製品名	Anti-Endothelin B Receptor/ET-B antibody
製品の詳細	Rabbit polyclonal to Endothelin B Receptor/ET-B
由来種	Rabbit
アプリケーション	<b>適用あり:</b> IHC-Fr, ICC/IF, IHC-P <b>適用なし:</b> WB
種交差性	<b>交差種:</b> Mouse, Human <b>交差が予測される動物種:</b> Rabbit, Goat, Horse, Chicken, Cow, Dog, Pig, Rhesus monkey 
免疫原	Synthetic peptide corresponding to Mouse Endothelin B Receptor/ET-B aa 400-500 (C terminal) conjugated to keyhole limpet haemocyanin. Database link: <a href="#">P48302</a>
	 <a href="#">Run BLAST with</a>  <a href="#">Run BLAST with</a>
特記事項	<p>The Life Science industry has been in the grips of a reproducibility crisis for a number of years. Abcam is leading the way in addressing this with our range of recombinant monoclonal antibodies and knockout edited cell lines for gold-standard validation. Please check that this product meets your needs before purchasing.</p> <p>If you have any questions, special requirements or concerns, please send us an inquiry and/or contact our Support team ahead of purchase. Recommended alternatives for this product can be found below, along with publications, customer reviews and Q&amp;As</p>

### 製品の特性

製品の状態	Liquid
保存方法	Shipped at 4°C. Upon delivery aliquot and store at -20°C. Avoid freeze / thaw cycles.
バッファー	Preservative: 0.02% Sodium azide Constituent: 99% Whole serum
精製度	Whole antiserum
ポリ/モノ	ポリクローナル
アイソタイプ	IgG

### アプリケーション

## The Abpromise guarantee

**Abpromise保証は、次のテスト済みアプリケーションにおけるab117529の使用に適用されます**

アプリケーションノートには、推奨の開始希釈率がありますが、適切な希釈率につきましてはご検討ください。

アプリケーション	Abreviews	特記事項
IHC-Fr		1/500 - 1/2000.
ICC/IF	★★★★★ (2)	1/5000.
IHC-P	★★★★★ (1)	1/2000.

## 追加情報

Is unsuitable for WB.

## ターゲット情報

### 機能

Non-specific receptor for endothelin 1, 2, and 3. Mediates its action by association with G proteins that activate a phosphatidylinositol-calcium second messenger system.

### 組織特異性

Expressed in placental stem villi vessels, but not in cultured placental villi smooth muscle cells.

### 関連疾患

Defects in EDNRB are a cause of Waardenburg syndrome type 4A (WS4A) [MIM:277580]; also known as Waardenburg-Shah syndrome. WS4A is characterized by the association of Waardenburg features (depigmentation and deafness) and the absence of enteric ganglia in the distal part of the intestine (Hirschsprung disease).

Defects in EDNRB are the cause of Hirschsprung disease type 2 (HSCR2) [MIM:600155]; also known as aganglionic megacolon (MGC). HSCR2 is a congenital disorder characterized by absence of enteric ganglia along a variable length of the intestine. It is the most common cause of congenital intestinal obstruction. Early symptoms range from complete acute neonatal obstruction, characterized by vomiting, abdominal distention and failure to pass stool, to chronic constipation in the older child.

Defects in EDNRB are the cause of ABCD syndrome (ABCDs) [MIM:600501]. ABCD syndrome is an autosomal recessive syndrome characterized by albinism, black lock at temporal occipital region, bilateral deafness, aganglionosis of the large intestine and total absence of neurocytes and nerve fibers in the small intestine.

### 配列類似性

Belongs to the G-protein coupled receptor 1 family. Endothelin receptor subfamily. EDNRB sub-subfamily.

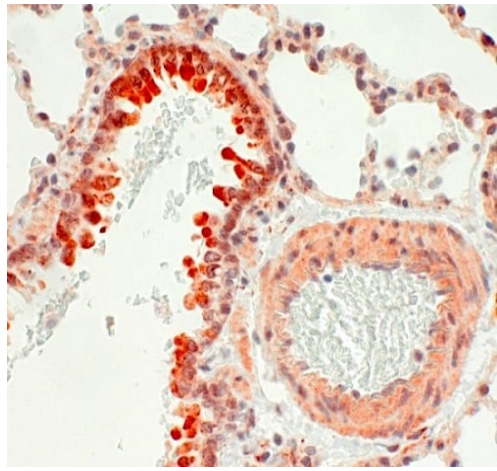
### 翻訳後修飾

Palmitoylation of Cys-402 was confirmed by the palmitoylation of Cys-402 in a deletion mutant lacking both Cys-403 and Cys-405.

### 細胞内局在

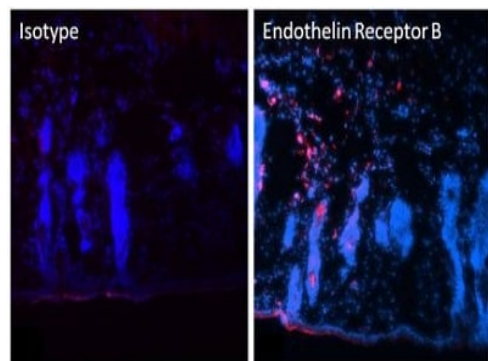
Cell membrane.

## 画像



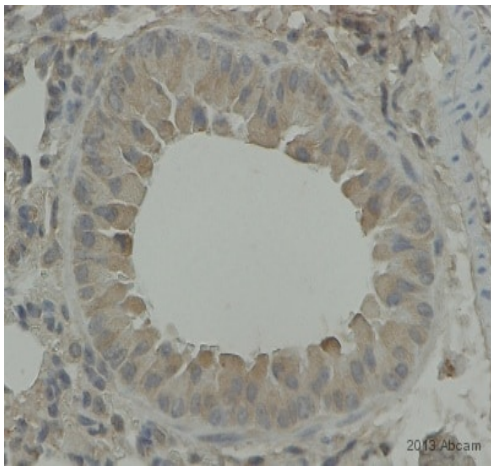
Immunohistochemistry (Formalin/PFA-fixed paraffin-embedded sections) - Anti-Endothelin B Receptor/ET-B antibody (ab117529)

Immunohistochemistry (Formalin/PFA-fixed paraffin-embedded sections) analysis of mouse lung tissue sections labeling Endothelin B Receptor/ET-B with ab117529.



Immunohistochemistry (Frozen sections) - Anti-Endothelin B Receptor/ET-B antibody (ab117529)

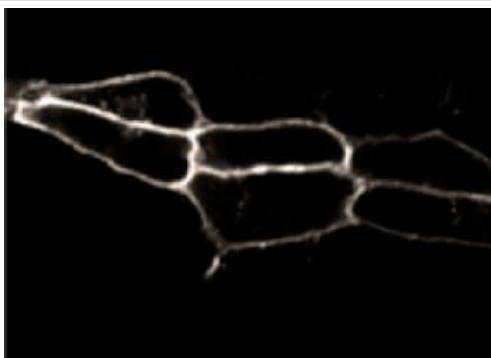
Immunohistochemistry (Frozen sections) analysis of mouse skin tissue sections labeling Endothelin B Receptor/ET-B with ab117529 at 1/800 dilution. Tissues were fixed for 10 minutes, blocked in 3% fish gelatin for 10-20 minutes, and probed with an Isotype Control Antibody (left panel) (1/800 dilution), and Anti-Endothelin B Receptor antibody (ab117529) (right panel) overnight at 4°C. Detection was performed using a PE-conjugated anti-rabbit IgG secondary antibody at a dilution of 1/800 (red). Nuclei were stained with DAPI and tissues were visualized by fluorescence microscopy.



Immunohistochemistry (Formalin/PFA-fixed paraffin-embedded sections) analysis of mouse lung tissue sections labeling Endothelin B Receptor/ET-B with ab117529 at 1/1500 dilution. Tissue was fixed with formaldehyde; heat mediated antigen retrieval was performed using a citrate buffer pH 6.0. The tissue was blocked with 3% serum for 30 minutes at 20°C. The tissue was incubated with Anti-Endothelin B Receptor antibody (ab117529) for 12 hours in PBS at 20°C. A biotin conjugated goat anti-rabbit secondary antibody at 1/200 dilution.

Immunohistochemistry (Formalin/PFA-fixed paraffin-embedded sections) - Anti-Endothelin B Receptor/ET-B antibody (ab117529)

This image is courtesy of an anonymous abreview.



ab117529, at 1/5000 dilution, staining Endothelin B Receptor/ET-B in ETB-transfected HEK293 cells by Immunocytochemistry.

Immunocytochemistry/ Immunofluorescence - Anti-Endothelin B Receptor/ET-B antibody (ab117529)

**Please note:** All products are "FOR RESEARCH USE ONLY. NOT FOR USE IN DIAGNOSTIC PROCEDURES"

### Our Abpromise to you: Quality guaranteed and expert technical support

- Replacement or refund for products not performing as stated on the datasheet
- Valid for 12 months from date of delivery

- Response to your inquiry within 24 hours
- We provide support in Chinese, English, French, German, Japanese and Spanish
- Extensive multi-media technical resources to help you
- We investigate all quality concerns to ensure our products perform to the highest standards

If the product does not perform as described on this datasheet, we will offer a refund or replacement. For full details of the Abpromise, please visit <https://www.abcam.co.jp/abpromise> or contact our technical team.

#### **Terms and conditions**

---

- Guarantee only valid for products bought direct from Abcam or one of our authorized distributors