


Anti-Endothelin A Receptor/ET-A antibody ab85163

★★★★☆ **4 Abreviews** **19 References** 画像数 **2**

製品の概要

製品名	Anti-Endothelin A Receptor/ET-A antibody
製品の詳細	Rabbit polyclonal to Endothelin A Receptor/ET-A
由来種	Rabbit
アプリケーション	適用あり: WB
種交差性	交差種: Rat 交差が予測される動物種: Mouse, Rabbit, Dog, Human 
免疫原	Synthetic peptide corresponding to Rat Endothelin A Receptor/ET-A aa 100-200 conjugated to keyhole limpet haemocyanin. (Peptide available as ab93498)
特記事項	<p>The Life Science industry has been in the grips of a reproducibility crisis for a number of years. Abcam is leading the way in addressing this with our range of recombinant monoclonal antibodies and knockout edited cell lines for gold-standard validation. Please check that this product meets your needs before purchasing.</p> <p>If you have any questions, special requirements or concerns, please send us an inquiry and/or contact our Support team ahead of purchase. Recommended alternatives for this product can be found below, along with publications, customer reviews and Q&As</p>

製品の特性

製品の状態	Liquid
保存方法	Shipped at 4°C. Store at +4°C short term (1-2 weeks). Upon delivery aliquot. Store at -20°C or -80°C. Avoid freeze / thaw cycle.
バッファー	pH: 7.40 Preservative: 0.02% Sodium azide Constituent: PBS Batches of this product that have a concentration < 1mg/ml may have BSA added as a stabilising agent. If you would like information about the formulation of a specific lot, please contact our scientific support team who will be happy to help.
精製度	Immunogen affinity purified
ポリ/モノ	ポリクローナル

アプリケーション

The Abpromise guarantee

Abpromise保証は、次のテスト済みアプリケーションにおけるab85163の使用に適用されます

アプリケーションノートには、推奨の開始希釈率がありますが、適切な希釈率につきましてはご確認ください。

アプリケーション	Abreviews	特記事項
WB	★★★★★ (1)	Use a concentration of 1 µg/ml. Detects a band of approximately 46 kDa (predicted molecular weight: 48 kDa).

ターゲット情報

機能

Receptor for endothelin-1. Mediates its action by association with G proteins that activate a phosphatidylinositol-calcium second messenger system. The rank order of binding affinities for ET-A is: ET1 > ET2 >> ET3.

組織特異性

Isoform 1, isoform 3 and isoform 4 are expressed in a variety of tissues, with highest levels in the aorta and cerebellum, followed by lung, atrium and cerebral cortex, lower levels in the placenta, kidney, adrenal gland, duodenum, colon, ventricle and liver but no expression in umbilical vein endothelial cells. Within the placenta, isoform 1, isoform 2, isoform 3 and isoform 4 are expressed in the villi and stem villi vessels.

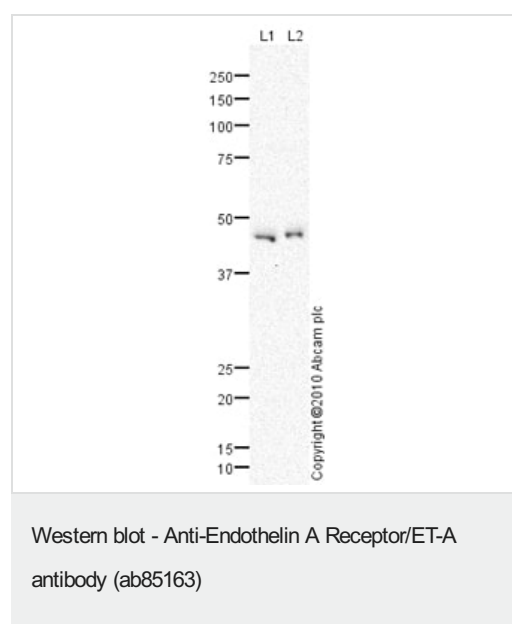
配列類似性

Belongs to the G-protein coupled receptor 1 family. Endothelin receptor subfamily. EDNRA sub-subfamily.

細胞内局在

Cell membrane.

画像



All lanes : Anti-Endothelin A Receptor/ET-A antibody (ab85163) at 1 µg/ml

Lane 1 : Brain (Rat) Tissue Lysate

Lane 2 : Cerebellum Rat Tissue Lysate

Lysates/proteins at 10 µg per lane.

Secondary

All lanes : Goat polyclonal to Rabbit IgG - H&L - Pre-Adsorbed (HRP) at 1/3000 dilution

Developed using the ECL technique.

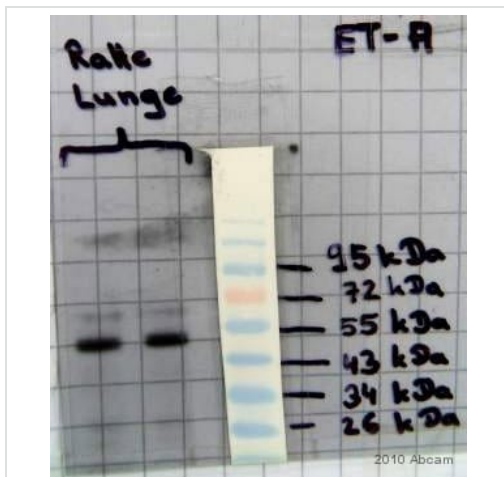
Performed under reducing conditions.

Predicted band size: 48 kDa

Observed band size: 46 kDa

Exposure time: 20 minutes

The band observed at 46 kDa could potentially be a cleaved form of Rat Endothelin-1 receptor precursor, as the target protein contains a 20 amino acid signal peptide, which when removed gives an expected molecular weight of 46 kDa.



Western blot - Anti-Endothelin A Receptor/ET-A antibody (ab85163)

This image is courtesy of an Abreview submitted by Nico Jentsch

All lanes : Anti-Endothelin A Receptor/ET-A antibody (ab85163) at 1/250 dilution (in 5% BSA + TBS + 0.1% Tween20 for 12 hours at 4°C)

All lanes : Whole tissue lysate of rat lung

Lysates/proteins at 40 µg per lane.

Secondary

All lanes : An HRP-conjugated Goat anti-rabbit IgG polyclonal at 1/1000 dilution

Developed using the ECL technique.

Performed under non-reducing conditions.

Predicted band size: 48 kDa

Observed band size: 48 kDa

Exposure time: 30 seconds

Blocking step: 5% Milk for 1 hour at 23°C

Please note: All products are "FOR RESEARCH USE ONLY. NOT FOR USE IN DIAGNOSTIC PROCEDURES"

Our Abpromise to you: Quality guaranteed and expert technical support

- Replacement or refund for products not performing as stated on the datasheet
- Valid for 12 months from date of delivery
- Response to your inquiry within 24 hours

- We provide support in Chinese, English, French, German, Japanese and Spanish
- Extensive multi-media technical resources to help you
- We investigate all quality concerns to ensure our products perform to the highest standards

If the product does not perform as described on this datasheet, we will offer a refund or replacement. For full details of the Abpromise, please visit <https://www.abcam.co.jp/abpromise> or contact our technical team.

Terms and conditions

- Guarantee only valid for products bought direct from Abcam or one of our authorized distributors