




Anti-Endothelin A Receptor/ET-A antibody ab117521

★★★★★ [2 Abreviews](#) [16 References](#) [画像数 4](#)

製品の概要

製品名	Anti-Endothelin A Receptor/ET-A antibody
製品の詳細	Rabbit polyclonal to Endothelin A Receptor/ET-A
由来種	Rabbit
アプリケーション	適用あり: ICC, WB, IHC-P
種交差性	交差種: Mouse, Human 交差が予測される動物種: Cow, Dog, Pig 
免疫原	Synthetic peptide corresponding to Mouse Endothelin A Receptor/ET-A aa 400-500 (C terminal) conjugated to keyhole limpet haemocyanin. Database link: Q61614 <div>  Run BLAST with  Run BLAST with </div>
ポジティブ・コントロール	Mouse dorsal root ganglia; Mouse heart tissue; Endothelin A Receptor/ET-A transfected cells; Mouse heart lysate
特記事項	<p>We have received mixed feedback about mouse cross reactivity, some lot works and some doesn't so we no longer guarantee this species.</p> <p>The Life Science industry has been in the grips of a reproducibility crisis for a number of years. Abcam is leading the way in addressing this with our range of recombinant monoclonal antibodies and knockout edited cell lines for gold-standard validation. Please check that this product meets your needs before purchasing.</p> <p>If you have any questions, special requirements or concerns, please send us an inquiry and/or contact our Support team ahead of purchase. Recommended alternatives for this product can be found below, along with publications, customer reviews and Q&As</p>

製品の特性

製品の状態	Liquid
保存方法	Shipped at 4°C. Upon delivery aliquot and store at -20°C. Avoid freeze / thaw cycles.
バッファー	Preservative: 0.02% Sodium azide Constituent: 99% Whole serum
精製度	Whole antiserum
ポリ/モノ	ポリクローナル

アプリケーション

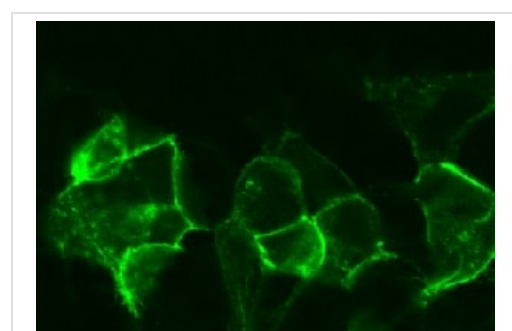
The Abpromise guarantee Abpromise保証は、 次のテスト済みアプリケーションにおけるab117521の使用に適用されます
アプリケーションノートには、推奨の開始希釈率がありますが、適切な希釈率につきましてはご検討ください。

アプリケーション	Abreviews	特記事項
ICC		1/5000.
WB		1/5000. Predicted molecular weight: 49 kDa.
IHC-P	★★★★★ (1)	1/2000.

ターゲット情報

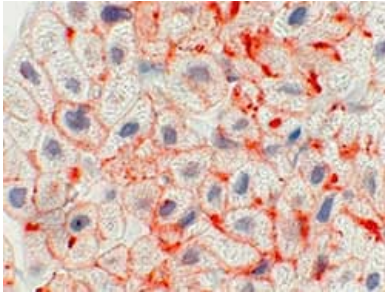
機能	Receptor for endothelin-1. Mediates its action by association with G proteins that activate a phosphatidylinositol-calcium second messenger system. The rank order of binding affinities for ET-A is: ET1 > ET2 >> ET3.
組織特異性	Isoform 1, isoform 3 and isoform 4 are expressed in a variety of tissues, with highest levels in the aorta and cerebellum, followed by lung, atrium and cerebral cortex, lower levels in the placenta, kidney, adrenal gland, duodenum, colon, ventricle and liver but no expression in umbilical vein endothelial cells. Within the placenta, isoform 1, isoform 2, isoform 3 and isoform 4 are expressed in the villi and stem villi vessels.
配列類似性	Belongs to the G-protein coupled receptor 1 family. Endothelin receptor subfamily. EDNRA sub-subfamily.
細胞内局在	Cell membrane.

画像



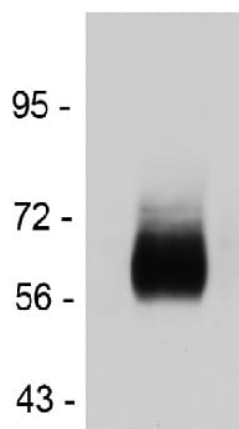
ab117521, at 1/5000 dilution, staining Endothelin A Receptor/ET-A in HEK293 transfected with Endothelin A receptor cells by Immunocytochemistry.

Immunocytochemistry - Anti-Endothelin A
Receptor/ET-A antibody (ab117521)



Immunohistochemistry (Formalin/PFA-fixed paraffin-embedded sections) - Anti-Endothelin A Receptor/ET-A antibody (ab117521)

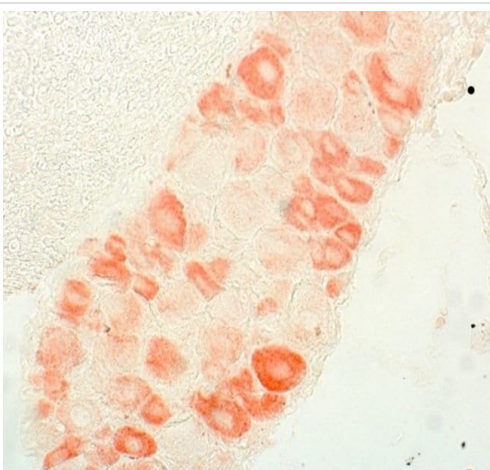
ab117251, at 1/2000 dilution, staining Endothelin A Receptor/ET-A in the atrium of mouse heart by Immunohistochemistry.



Western blot - Anti-Endothelin A Receptor/ET-A antibody (ab117521)

Anti-Endothelin A Receptor/ET-A antibody (ab117521) at 1/5000 dilution + Mouse heart lysate

Predicted band size: 49 kDa



Immunohistochemistry (Formalin/PFA-fixed paraffin-embedded sections) - Anti-Endothelin A Receptor/ET-A antibody (ab117521)

Immunohistochemistry analysis of mouse dorsal root ganglia labeling Endothelin A Receptor/ET-A with ab117521.

Please note: All products are "FOR RESEARCH USE ONLY. NOT FOR USE IN DIAGNOSTIC PROCEDURES"

Our Abpromise to you: Quality guaranteed and expert technical support

- Replacement or refund for products not performing as stated on the datasheet
- Valid for 12 months from date of delivery
- Response to your inquiry within 24 hours

- We provide support in Chinese, English, French, German, Japanese and Spanish
- Extensive multi-media technical resources to help you
- We investigate all quality concerns to ensure our products perform to the highest standards

If the product does not perform as described on this datasheet, we will offer a refund or replacement. For full details of the Abpromise, please visit <https://www.abcam.co.jp/abpromise> or contact our technical team.

Terms and conditions

- Guarantee only valid for products bought direct from Abcam or one of our authorized distributors