

Anti-Endothelin 1 antibody ab117757

★★★★★ **1 Abreviews** **26 References** 画像数 3

製品の概要

製品名	Anti-Endothelin 1 antibody
製品の詳細	Rabbit polyclonal to Endothelin 1
由来種	Rabbit
アプリケーション	適用あり: IHC-P, WB, ICC
種交差性	交差種: Mouse, Human
免疫原	Synthetic peptide conjugated to KLH, corresponding to CS-Abu-SSLMDKE-Abu-VYF-Abu-HLDIIW of Mouse Endothelin 1.
ポジティブ・コントロール	WB: HEK-293, HUVEC, HAEC and SK-BR-3 cell lysates IHC-P: Mouse Dorsal root ganglia ICC: A549 cells
特記事項	<p>The Life Science industry has been in the grips of a reproducibility crisis for a number of years. Abcam is leading the way in addressing this with our range of recombinant monoclonal antibodies and knockout edited cell lines for gold-standard validation. Please check that this product meets your needs before purchasing.</p> <p>If you have any questions, special requirements or concerns, please send us an inquiry and/or contact our Support team ahead of purchase. Recommended alternatives for this product can be found below, along with publications, customer reviews and Q&As</p>

製品の特性

製品の状態	Liquid
保存方法	Shipped at 4°C. Upon delivery aliquot and store at -20°C. Avoid freeze / thaw cycles.
バッファー	Preservative: 0.02% Sodium azide Constituent: Whole serum
精製度	Whole antiserum
ポリ/モノ	ポリクローナル
アイソタイプ	IgG

アプリケーション

The Abpromise guarantee

Abpromise保証は、 次のテスト済みアプリケーションにおけるab117757の使用に適用されます

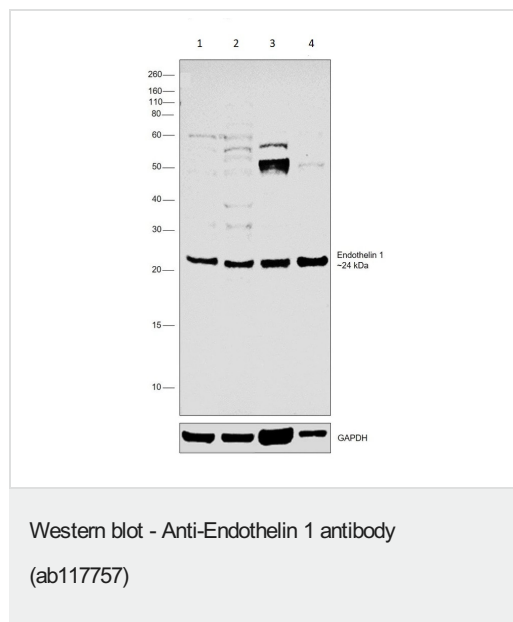
アプリケーションノートには、推奨の開始希釈率がありますが、適切な希釈率につきましてはご確認ください。

アプリケーション	Abreviews	特記事項
IHC-P		1/2000.
WB	★★★★★ (1)	1/3000 - 1/5000. Predicted molecular weight: 24 kDa.
ICC		1/250.

ターゲット情報

機能	Endothelins are endothelium-derived vasoconstrictor peptides.
組織特異性	Expressed in lung, placental stem villi vessels and in cultured placental vascular smooth muscle cells.
配列類似性	Belongs to the endothelin/sarafotoxin family.
細胞内局在	Secreted.

画像



All lanes : Anti-Endothelin 1 antibody (ab117757) at 1/3000 dilution

Lane 1 : HUVEC cell lysate

Lane 2 : HAEC cell lysate

Lane 3 : SK-BR-3 cell lysate

Lane 4 : HEK-293 cell lysate

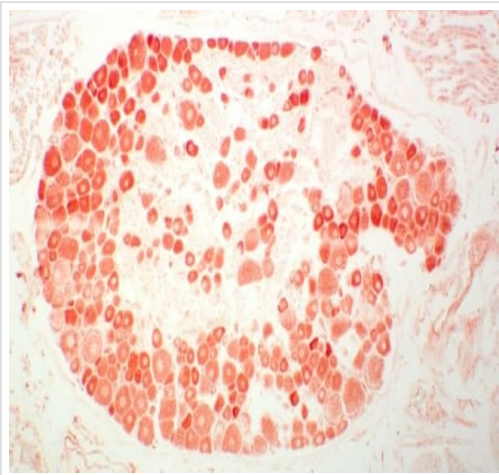
Lysates/proteins at 30 µg per lane.

Secondary

All lanes : Goat anti-Rabbit IgG (H+L) Recombinant Secondary Antibody, HRP at 1/4000 dilution

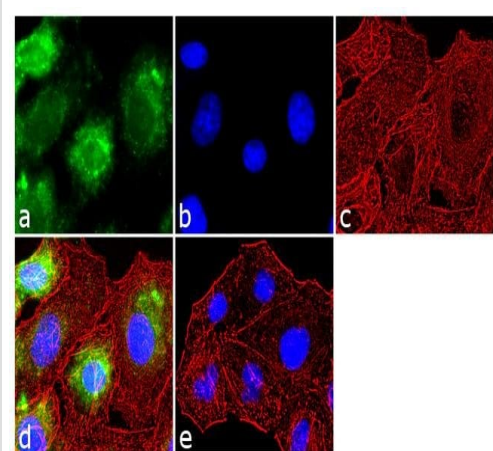
Predicted band size: 24 kDa

Observed band size: 24 kDa



Immunohistochemistry (Formalin/PFA-fixed paraffin-embedded sections) - Anti-Endothelin 1 antibody (ab117757)

ab117757 at 1/2000 dilution staining Endothelin 1 in Mouse Dorsal root ganglia by Immunohistochemistry.



Immunocytochemistry - Anti-Endothelin 1 antibody (ab117757)

Immunocytochemistry analysis of 70% confluent log phase A549 cells labeling Endothelin 1 with ab117757. The cells were fixed with 4% paraformaldehyde for 10 minutes, permeabilized with 0.1% Triton™ X-100 for 10 minutes, and blocked with 1% BSA for 1 hour at room temperature. The cells were labeled with ab117757 at 1/250 dilution in 0.1% BSA and incubated for 3 hours at room temperature and then labeled with Goat anti-Rabbit IgG (H+L) Secondary Antibody, Alexa Fluor® 488 conjugate at a dilution of 1/2000 for 45 minutes at room temperature (Panel a: green). Nuclei (Panel b: blue) were stained with SlowFade® Gold Antifade Mountant with DAPI. F-actin (Panel c: red) was stained with Rhodamine Phalloidin at 1/300. Panel d represents the merged image showing cytoplasmic localization. Panel e shows the no primary antibody control. The images were captured at 60X magnification.

Please note: All products are "FOR RESEARCH USE ONLY. NOT FOR USE IN DIAGNOSTIC PROCEDURES"

Our Abpromise to you: Quality guaranteed and expert technical support

- Replacement or refund for products not performing as stated on the datasheet

- Valid for 12 months from date of delivery
- Response to your inquiry within 24 hours
- We provide support in Chinese, English, French, German, Japanese and Spanish
- Extensive multi-media technical resources to help you
- We investigate all quality concerns to ensure our products perform to the highest standards

If the product does not perform as described on this datasheet, we will offer a refund or replacement. For full details of the Abpromise, please visit <https://www.abcam.co.jp/abpromise> or contact our technical team.

Terms and conditions

- Guarantee only valid for products bought direct from Abcam or one of our authorized distributors