

Anti-Endostatin/COL18A1 antibody [KT58] ab114141

画像数 1

製品の概要

製品名	Anti-Endostatin/COL18A1 antibody [KT58]
製品の詳細	Mouse monoclonal [KT58] to Endostatin/COL18A1
由来種	Mouse
アプリケーション	適用あり: Sandwich ELISA
種交差性	交差種: Human
免疫原	Recombinant full length protein corresponding to Human Endostatin/COL18A1.
特記事項	<p>The Life Science industry has been in the grips of a reproducibility crisis for a number of years. Abcam is leading the way in addressing this with our range of recombinant monoclonal antibodies and knockout edited cell lines for gold-standard validation. Please check that this product meets your needs before purchasing.</p> <p>If you have any questions, special requirements or concerns, please send us an inquiry and/or contact our Support team ahead of purchase. Recommended alternatives for this product can be found below, along with publications, customer reviews and Q&As</p>

製品の特性

製品の状態	Liquid
保存方法	Shipped at 4°C. Store at +4°C short term (1-2 weeks). Upon delivery aliquot. Store at -20°C or -80°C. Avoid freeze / thaw cycle.
バッファー	Preservative: 0.1% Sodium azide Constituent: 99% PBS
精製度	Protein A purified
ポリ/モノ	モノクローナル
クローン名	KT58
アイソタイプ	IgG1

アプリケーション

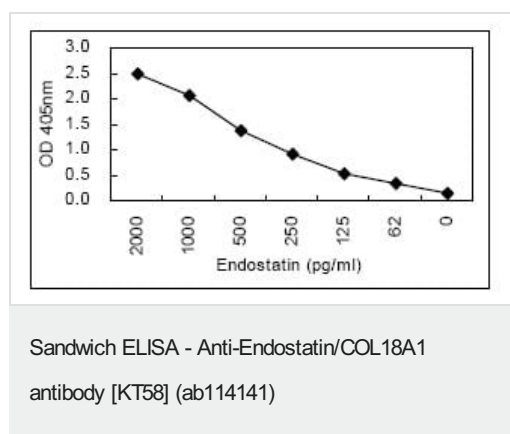
The Abpromise guarantee **Abpromise保証は、** 次のテスト済みアプリケーションにおけるab114141の使用に適用されます
アプリケーションノートには、推奨の開始希釈率がありますが、適切な希釈率につきましてはご検討ください。

アプリケーション	Abreviews	特記事項
Sandwich ELISA		Use a concentration of 5 µg/ml. Can be paired for Sandwich ELISA with <u>HRP Mouse monoclonal [KT60] to Endostatin/COL18A1 (ab106491)</u> . For coating plates.

ターゲット情報

機能	COLA18A probably plays a major role in determining the retinal structure as well as in the closure of the neural tube. Endostatin potentially inhibits endothelial cell proliferation and angiogenesis. May inhibit angiogenesis by binding to the heparan sulfate proteoglycans involved in growth factor signaling.
組織特異性	Present in multiple organs with highest levels in liver, lung and kidney.
関連疾患	Defects in COL18A1 are a cause of Knobloch syndrome (KNO) [MIM:267750]. KNO is an autosomal recessive disorder defined by the occurrence of high myopia, vitreoretinal degeneration with retinal detachment, macular abnormalities and occipital encephalocele.
配列類似性	Belongs to the multiplexin collagen family. Contains 1 FZ (frizzled) domain. Contains 1 TSP N-terminal (TSPN) domain.
翻訳後修飾	Prolines at the third position of the tripeptide repeating unit (G-X-Y) are hydroxylated in some or all of the chains.
細胞内局在	Secreted > extracellular space > extracellular matrix.

画像



ab114141, capturing Human Endostatin/COL18A1 in a Sandwich ELISA.
ab114141 was used at 5 µg/ml to coat the ELISA plates.
Detection utilised **ab106491**, which is an IgG2a monoclonal antibody conjugated to HRP.

Please note: All products are "FOR RESEARCH USE ONLY. NOT FOR USE IN DIAGNOSTIC PROCEDURES"

Our Abpromise to you: Quality guaranteed and expert technical support

- Replacement or refund for products not performing as stated on the datasheet
- Valid for 12 months from date of delivery
- Response to your inquiry within 24 hours

- We provide support in Chinese, English, French, German, Japanese and Spanish
- Extensive multi-media technical resources to help you
- We investigate all quality concerns to ensure our products perform to the highest standards

If the product does not perform as described on this datasheet, we will offer a refund or replacement. For full details of the Abpromise, please visit <https://www.abcam.co.jp/abpromise> or contact our technical team.

Terms and conditions

- Guarantee only valid for products bought direct from Abcam or one of our authorized distributors