

Anti-Endomucin antibody [V.7C7.1] ab106100

★★★★★ [9 Abreviews](#) [41 References](#) [画像数 1](#)

製品の概要

製品名	Anti-Endomucin antibody [V.7C7.1]
製品の詳細	Rat monoclonal [V.7C7.1] to Endomucin
由来種	Rat
アプリケーション	適用あり: IHC-Fr, IHC-P, IP, Flow Cyt, WB, IHC - Wholmount, ICC/IF 適用なし: FuncS
種交差性	交差種: Mouse 非交差種: Human
免疫原	Mouse Endomucin-IgG fusion protein
特記事項	<p>The Life Science industry has been in the grips of a reproducibility crisis for a number of years. Abcam is leading the way in addressing this with our range of recombinant monoclonal antibodies and knockout edited cell lines for gold-standard validation. Please check that this product meets your needs before purchasing.</p> <p>If you have any questions, special requirements or concerns, please send us an inquiry and/or contact our Support team ahead of purchase. Recommended alternatives for this product can be found below, along with publications, customer reviews and Q&As</p>

製品の特性

製品の状態	Liquid
保存方法	Shipped at 4°C. Upon delivery aliquot and store at -20°C. Avoid freeze / thaw cycles.
バッファー	Preservative: 0.02% Sodium azide Constituents: 0.1% BSA, PBS
精製度	Protein G purified
特記事項(精製)	0.2 µm filtered solution
ポリ/モノ	モノクローナル
クローン名	V.7C7.1
アイソタイプ	IgG2a

アプリケーション

The Abpromise guarantee Abpromise保証は、 次のテスト済みアプリケーションにおけるab106100の使用に適用されます
 アプリケーションノートには、推奨の開始希釈率がありますが、適切な希釈率につきましてはご検討ください。

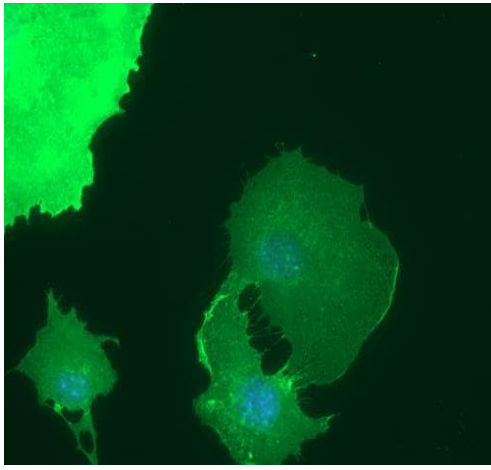
アプリケーション	Abreviews	特記事項
IHC-Fr		Use at an assay dependent concentration.
IHC-P	★★★★★ (4)	Use at an assay dependent concentration.
IP		Use at an assay dependent concentration.
Flow Cyt		Use at an assay dependent concentration. ab18450 - Rat monoclonal IgG2a, is suitable for use as an isotype control with this antibody.
WB		Use at an assay dependent concentration.
IHC - Wholemount	★★★★★ (1)	Use at an assay dependent concentration.
ICC/IF		Use a concentration of 1 µg/ml.

追加情報 Is unsuitable for FuncS.

ターゲット情報

機能	Endothelial sialomucin, also called endomucin or mucin-like sialoglycoprotein, which interferes with the assembly of focal adhesion complexes and inhibits interaction between cells and the extracellular matrix.
組織特異性	Expressed in heart, kidney and lung.
翻訳後修飾	Highly O-glycosylated. Sialic acid-rich glycoprotein.
細胞内局在	Secreted and Cell membrane. Membrane. Consistently localized to the plasma membrane and less abundantly to Golgi-like perinuclear stacks.

画像



Immuno fluorescence staining of bEND3 cells with ab106100 at a concentration of 1 µg/ml.

Immunocytochemistry/ Immunofluorescence - Anti-Endomucin antibody [V.7C7.1] (ab106100)

Please note: All products are "FOR RESEARCH USE ONLY. NOT FOR USE IN DIAGNOSTIC PROCEDURES"

Our Abpromise to you: Quality guaranteed and expert technical support

- Replacement or refund for products not performing as stated on the datasheet
- Valid for 12 months from date of delivery
- Response to your inquiry within 24 hours
- We provide support in Chinese, English, French, German, Japanese and Spanish
- Extensive multi-media technical resources to help you
- We investigate all quality concerns to ensure our products perform to the highest standards

If the product does not perform as described on this datasheet, we will offer a refund or replacement. For full details of the Abpromise, please visit <https://www.abcam.co.jp/abpromise> or contact our technical team.

Terms and conditions

- Guarantee only valid for products bought direct from Abcam or one of our authorized distributors