


### Anti-Endo G antibody [EP1665Y] ab76122

KO 評価済 リコンビナント RabMAb

6 References 画像数 3

#### 製品の概要

製品名	Anti-Endo G antibody [EP1665Y]
製品の詳細	Rabbit monoclonal [EP1665Y] to Endo G
由来種	Rabbit
アプリケーション	<b>適用あり:</b> WB <b>適用なし:</b> Flow Cyt, ICC/IF, IHC-P or IP
種交差性	<b>交差種:</b> Mouse, Human <b>交差が予測される動物種:</b> Rat 
免疫原	Synthetic peptide within Human Endo G (C terminal). The exact sequence is proprietary.
ポジティブ・コントロール	HepG2 whole cell lysate ( <b>ab7900</b> )
特記事項	<p>This product is a recombinant monoclonal antibody, which offers several advantages including:</p> <ul style="list-style-type: none"> <li>- High batch-to-batch consistency and reproducibility</li> <li>- Improved sensitivity and specificity</li> <li>- Long-term security of supply</li> <li>- Animal-free production</li> </ul> <p>For more information <a href="#">see here</a>.</p> <p>Our RabMAb® technology is a patented hybridoma-based technology for making rabbit monoclonal antibodies. For details on our patents, please refer to <a href="#">RabMAb® patents</a>.</p>

#### 製品の特性

製品の状態	Liquid
保存方法	Shipped at 4°C. Upon delivery aliquot and store at -20°C. Avoid freeze / thaw cycles.
バッファー	pH: 7.20 Preservative: 0.01% Sodium azide Constituents: 9% PBS, 40% Glycerol (glycerin, glycerine), 0.05% BSA, 50% Tissue culture supernatant
精製度	Protein A purified
ポリ/モノ	モノクローナル
クローン名	EP1665Y

アイソタイプ

IgG

## アプリケーション

### The Abpromise guarantee

**Abpromise保証は、次のテスト済みアプリケーションにおけるab76122の使用に適用されます**

アプリケーションノートには、推奨の開始希釈率がありますが、適切な希釈率につきましてはご検討ください。

アプリケーション	Abreviews	特記事項
WB		1/2000 - 1/5000. Detects a band of approximately 35 kDa (predicted molecular weight: 36 kDa).

### 追加情報

Is unsuitable for Flow Cyt, ICC/IF, IHC-P or IP.

## ターゲット情報

### 機能

Cleaves DNA at double-stranded (DG)n.(DC)n and at single-stranded (DC)n tracts. In addition to deoxyribonuclease activities, also has ribonuclease (RNase) and RNase H activities. Capable of generating the RNA primers required by DNA polymerase gamma to initiate replication of mitochondrial DNA.

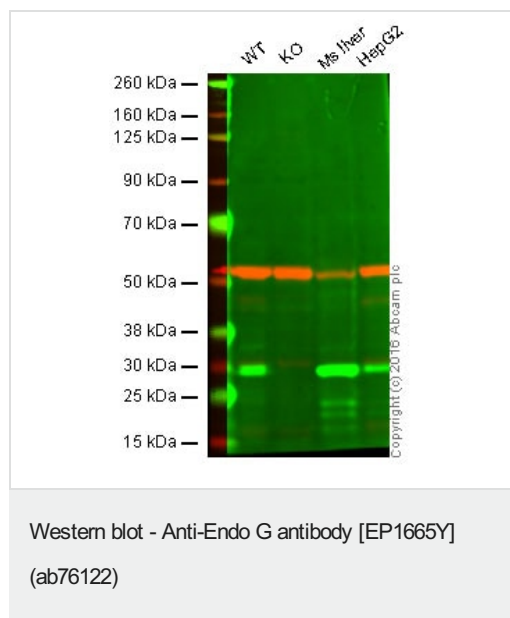
### 配列類似性

Belongs to the DNA/RNA non-specific endonuclease family.

### 細胞内局在

Mitochondrion.

## 画像



**Lane 1:** Wild-type HAP1 cell lysate (20 µg)

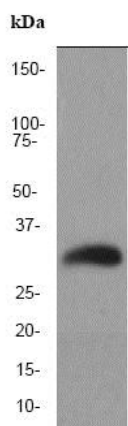
**Lane 2:** Endo G HAP1 cell lysate (20 µg)

**Lane 3:** Mouse liver tissue lysate (20 µg)

**Lane 4:** HepG2 cell lysate (20 µg)

**Lanes 1 - 4:** Merged signal (red and green). Green - ab76122 observed at 29 kDa. Red - loading control, **ab7291**, observed at 52 kDa.

ab76122 was shown to specifically react with Endo G when Endo G knockout samples were used. Wild-type and Endo G knockout samples were subjected to SDS-PAGE. ab76122 and **ab7291** (loading control to alpha tubulin) were diluted 1/2000 and 1/10000 respectively and incubated overnight at 4°C. Blots were developed with Goat anti-Rabbit IgG H&L (IRDye® 800CW) preadsorbed (**ab216773**) and Goat anti-Mouse IgG H&L (IRDye® 680RD) preadsorbed (**ab216776**) secondary antibodies at 1/10000 dilution for 1 h at room temperature before imaging.



Western blot - Anti-Endo G antibody [EP1665Y] (ab76122)

Anti-Endo G antibody [EP1665Y] (ab76122) at 1/2000 dilution + HepG2 cell lysate at 10 µg

### Secondary

HRP labelled goat anti-rabbit at 1/1000 dilution

Developed using the ECL technique.

**Predicted band size:** 36 kDa

**Observed band size:** 35 kDa

### Why choose a recombinant antibody?



**Research with confidence**  
Consistent and reproducible results



**Long-term and scalable supply**  
Recombinant technology



**Success from the first experiment**  
Confirmed specificity



**Ethical standards compliant**  
Animal-free production

Anti-Endo G antibody [EP1665Y] (ab76122)

**Please note:** All products are "FOR RESEARCH USE ONLY. NOT FOR USE IN DIAGNOSTIC PROCEDURES"

### Our Abpromise to you: Quality guaranteed and expert technical support

- Replacement or refund for products not performing as stated on the datasheet
- Valid for 12 months from date of delivery
- Response to your inquiry within 24 hours
- We provide support in Chinese, English, French, German, Japanese and Spanish
- Extensive multi-media technical resources to help you
- We investigate all quality concerns to ensure our products perform to the highest standards

If the product does not perform as described on this datasheet, we will offer a refund or replacement. For full details of the Abpromise, please visit <https://www.abcam.co.jp/abpromise> or contact our technical team.

## Terms and conditions

---

- Guarantee only valid for products bought direct from Abcam or one of our authorized distributors