

# Anti-ENC1 antibody ab106683

**1 References** [画像数 1](#)

### 製品の概要

製品名	Anti-ENC1 antibody
製品の詳細	Chicken polyclonal to ENC1
由来種	Chicken
アプリケーション	<b>適用あり:</b> WB
種交差性	<b>交差種:</b> Mouse
免疫原	Synthetic peptide corresponding to Human ENC1 (internal sequence). The immunogen is located within amino acids 230 - 280 (13 amino acid synthetic peptide) of ENC-1. Database link: <a href="#">O14682</a>
ポジティブ・コントロール	WB: Mouse kidney muscle tissue lysate.
特記事項	<p>The Life Science industry has been in the grips of a reproducibility crisis for a number of years. Abcam is leading the way in addressing this with our range of recombinant monoclonal antibodies and knockout edited cell lines for gold-standard validation. Please check that this product meets your needs before purchasing.</p> <p>If you have any questions, special requirements or concerns, please send us an inquiry and/or contact our Support team ahead of purchase. Recommended alternatives for this product can be found below, along with publications, customer reviews and Q&amp;As</p>

### 製品の特性

製品の状態	Liquid
保存方法	Shipped at 4°C. Store at 4°C (stable for up to 12 months).
バッファー	pH: 7.2 Preservative: 0.02% Sodium azide Constituent: PBS
精製度	Immunogen affinity purified
特記事項 (精製)	ab106683 is purified by affinity chromatography via a peptide column.
ポリ/モノ	ポリクローナル
アイソタイプ	IgY

### アプリケーション

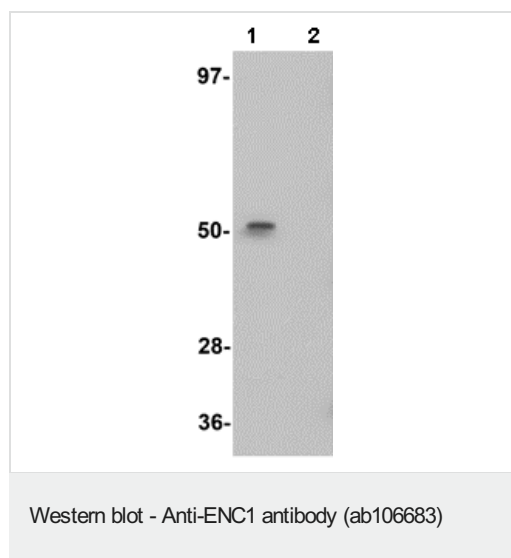
**The Abpromise guarantee**      **Abpromise保証は、次のテスト済みアプリケーションにおけるab106683の使用に適用されます**  
 アプリケーションノートには、推奨の開始希釈率がありますが、適切な希釈率につきましてはご検討ください。

アプリケーション	Abreviews	特記事項
WB		Use a concentration of 1 - 2 µg/ml. Predicted molecular weight: 66 kDa.

## ターゲット情報

機能	Actin-binding protein involved in the regulation of neuronal process formation and in differentiation of neural crest cells. May be down-regulated in neuroblastoma tumors. Substrate-specific adapter of an E3 ubiquitin-protein ligase complex which mediates the ubiquitination and subsequent proteasomal degradation of target proteins.
組織特異性	Detected in fetal brain tissue, moderate expression in fetal heart, lung and kidney. Highly expressed in adult brain, particularly high in the hippocampus and amygdala, and spinal chord. Detectable in adult pancreas.
パスウェイ	Protein modification; protein ubiquitination.
配列類似性	Contains 1 BTB (POZ) domain. Contains 6 Kelch repeats.
発生段階	Dramatically up-regulated upon neuronal differentiation.
翻訳後修飾	Ubiquitinated and probably targeted for proteasome-independent degradation.
細胞内局在	Nucleus matrix. Cytoplasm > cytoskeleton.

## 画像



**All lanes :** Anti-ENC1 antibody (ab106683) at 1 µg/ml

**Lane 1 :** Mouse Kidney muscle tissue lysate

**Lane 2 :** Mouse Kidney muscle tissue lysate

with blocking peptide

Lysates/proteins at 15 µg per lane.

**Predicted band size:** 66 kDa

**Please note:** All products are "FOR RESEARCH USE ONLY. NOT FOR USE IN DIAGNOSTIC PROCEDURES"

### **Our Abpromise to you: Quality guaranteed and expert technical support**

---

- Replacement or refund for products not performing as stated on the datasheet
- Valid for 12 months from date of delivery
- Response to your inquiry within 24 hours
  
- We provide support in Chinese, English, French, German, Japanese and Spanish
- Extensive multi-media technical resources to help you
- We investigate all quality concerns to ensure our products perform to the highest standards

If the product does not perform as described on this datasheet, we will offer a refund or replacement. For full details of the Abpromise, please visit <https://www.abcam.co.jp/abpromise> or contact our technical team.

### **Terms and conditions**

---

- Guarantee only valid for products bought direct from Abcam or one of our authorized distributors