


Anti-ENAH/MENA antibody [EPR5660] ab124685

リコンビナント RabMAb[®]

2 References [画像数 3](#)

製品の概要

製品名	Anti-ENAH/MENA antibody [EPR5660]
製品の詳細	Rabbit monoclonal [EPR5660] to ENAH/MENA
由来種	Rabbit
アプリケーション	適用あり: WB, IHC-P 適用なし: ICC/IF or IP
種交差性	交差種: Human 交差が予測される動物種: Mouse  非交差種: Rat
免疫原	Synthetic peptide. This information is proprietary to Abcam and/or its suppliers.
ポジティブ・コントロール	MDA-MB-435, MCF7, HUVEC and A431 cell lysates; Human Uterus tissue.
特記事項	This product is a recombinant monoclonal antibody, which offers several advantages including: <ul style="list-style-type: none"> - High batch-to-batch consistency and reproducibility - Improved sensitivity and specificity - Long-term security of supply - Animal-free production For more information see here . Our RabMAb [®] technology is a patented hybridoma-based technology for making rabbit monoclonal antibodies. For details on our patents, please refer to RabMAb[®] patents .

製品の特性

製品の状態	Liquid
保存方法	Shipped at 4°C. Upon delivery aliquot and store at -20°C. Avoid freeze / thaw cycles.
バッファー	pH: 7.20 Preservative: 0.05% Sodium azide Constituents: 40% Glycerol (glycerin, glycerine), 9.85% Tris glycine, 50% Tissue culture supernatant
精製度	Protein A purified
ポリ/モノ	モノクローナル
クローン名	EPR5660

アプリケーション

The Abpromise guarantee **Abpromise保証は、次のテスト済みアプリケーションにおけるab124685の使用に適用されず**
アプリケーションノートには、推奨の開始希釈率がありますが、適切な希釈率につきましてはご検討ください。

アプリケーション	Abreviews	特記事項
WB		1/1000 - 1/10000. Detects a band of approximately 80 kDa (predicted molecular weight: 67 kDa).
IHC-P		1/500 - 1/1000. Perform heat mediated antigen retrieval with citrate buffer pH 6 before commencing with IHC staining protocol. Antigen retrieval is recommended.

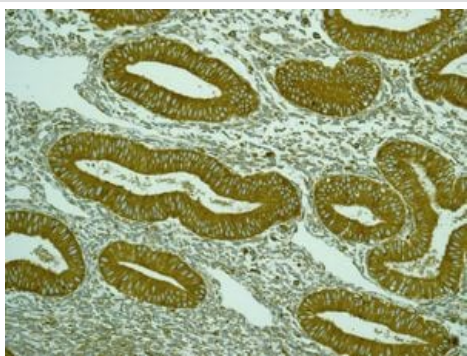
追加情報

Is unsuitable for ICC/IF or IP.

ターゲット情報

機能	Ena/VASP proteins are actin-associated proteins involved in a range of processes dependent on cytoskeleton remodeling and cell polarity such as axon guidance and lamellipodial and filopodial dynamics in migrating cells. ENAH induces the formation of F-actin rich outgrowths in fibroblasts. Acts synergistically with BAIAP2-alpha and downstream of NTN1 to promote filipodia formation. Required for the actin-based mobility of <i>Listeria monocytogenes</i> .
組織特異性	Expressed in myoepithelia of parotid, breast, bronchial glands and sweat glands. Expressed in colon-rectum muscularis mucosae epithelium, pancreas acinar ductal epithelium, endometrium epithelium, prostate fibromuscular stroma and placenta vascular media. Overexpressed in a majority of breast cancer cell lines and primary breast tumor lesions.
配列類似性	Belongs to the Ena/VASP family. Contains 1 WH1 domain.
ドメイン	The EVH2 domain is comprised of 3 regions. Block A is a thymosin-like domain required for G-actin binding. The KLKR motif within this block is essential for the G-actin binding and for actin polymerization. Block B is required for F-actin binding and subcellular location, and Block C for tetramerization.
翻訳後修飾	NTN1-induced PKA phosphorylation on Ser-265 directly parallels the formation of filopodial protrusions. Phosphorylated upon DNA damage, probably by ATM or ATR.
細胞内局在	Cytoplasm. Cytoplasm > cytoskeleton. Cell projection > lamellipodium. Cell projection > filopodium. Cell junction > synapse. Cell junction > focal adhesion. Targeted to the leading edge of lamellipodia and filopodia by MRL family members. Colocalizes at filopodial tips with a number of other proteins including vinculin and zyxlin. Colocalizes with N-WASP at the leading edge. Colocalizes with GPHN and PFN at synapses.

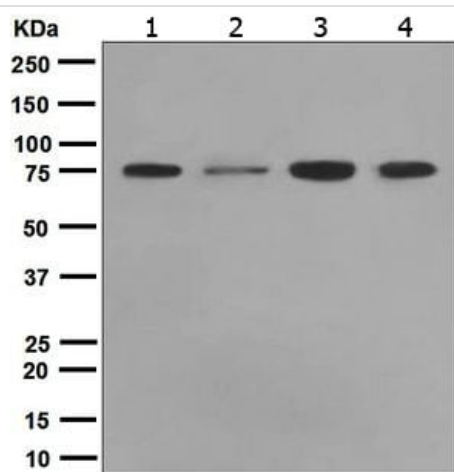
画像



Immunohistochemistry (Formalin/PFA-fixed paraffin-embedded sections) - Anti-ENAH/MENA antibody [EPR5660] (ab124685)

ab124685, at 1/500 dilution, staining ENAH/MENA in formalin-fixed, paraffin-embedded Human uterus tissue, by Immunohistochemistry.

Perform heat mediated antigen retrieval with citrate buffer pH 6 before commencing with IHC staining protocol.



Western blot - Anti-ENAH/MENA antibody [EPR5660] (ab124685)

All lanes : Anti-ENAH/MENA antibody [EPR5660] (ab124685) at 1/1000 dilution

Lane 1 : MDA-MB-435 (Human ductal carcinoma cell line) cell lysate

Lane 2 : MCF7 cell lysate

Lane 3 : HUVEC cell lysate

Lane 4 : A431 cell lysate

Lysates/proteins at 10 µg per lane.

Secondary

All lanes : Goat anti-rabbit HRP at 1/2000 dilution

Predicted band size: 67 kDa

Observed band size: 80 kDa

Why choose a recombinant antibody?

Research with confidence
Consistent and reproducible results

Long-term and scalable supply
Recombinant technology

Success from the first experiment
Confirmed specificity

Ethical standards compliant
Animal-free production

Anti-ENAH/MENA antibody [EPR5660] (ab124685)

Please note: All products are "FOR RESEARCH USE ONLY. NOT FOR USE IN DIAGNOSTIC PROCEDURES"

Our Abpromise to you: Quality guaranteed and expert technical support

- Replacement or refund for products not performing as stated on the datasheet
- Valid for 12 months from date of delivery
- Response to your inquiry within 24 hours
- We provide support in Chinese, English, French, German, Japanese and Spanish
- Extensive multi-media technical resources to help you
- We investigate all quality concerns to ensure our products perform to the highest standards

If the product does not perform as described on this datasheet, we will offer a refund or replacement. For full details of the Abpromise, please visit <https://www.abcam.co.jp/abpromise> or contact our technical team.

Terms and conditions

- Guarantee only valid for products bought direct from Abcam or one of our authorized distributors