


Anti-EMX2 antibody ab94713

★★★★★ [4 Abreviews](#) [2 References](#) [画像数 2](#)

製品の概要

製品名	Anti-EMX2 antibody
製品の詳細	Rabbit polyclonal to EMX2
由来種	Rabbit
アプリケーション	適用あり: WB
種交差性	交差種: Mouse, Human 交差が予測される動物種: Rat, Chicken, Cow, Dog, Pig, Zebrafish 
免疫原	Synthetic peptide. This information is proprietary to Abcam and/or its suppliers.
ポジティブ・コントロール	WB: Mouse brain and hippocampus tissue lysates.
特記事項	<p>The Life Science industry has been in the grips of a reproducibility crisis for a number of years. Abcam is leading the way in addressing this with our range of recombinant monoclonal antibodies and knockout edited cell lines for gold-standard validation. Please check that this product meets your needs before purchasing.</p> <p>If you have any questions, special requirements or concerns, please send us an inquiry and/or contact our Support team ahead of purchase. Recommended alternatives for this product can be found below, along with publications, customer reviews and Q&As</p>

製品の特性

製品の状態	Liquid
保存方法	Shipped at 4°C. Store at +4°C short term (1-2 weeks). Upon delivery aliquot. Store at -20°C or -80°C. Avoid freeze / thaw cycle.
バッファー	pH: 7.40 Preservative: 0.02% Sodium azide Constituent: PBS Batches of this product that have a concentration < 1mg/ml may have BSA added as a stabilising agent. If you would like information about the formulation of a specific lot, please contact our scientific support team who will be happy to help.
精製度	Immunogen affinity purified
ポリ/モノ	ポリクローナル
アイソタイプ	IgG

アプリケーション

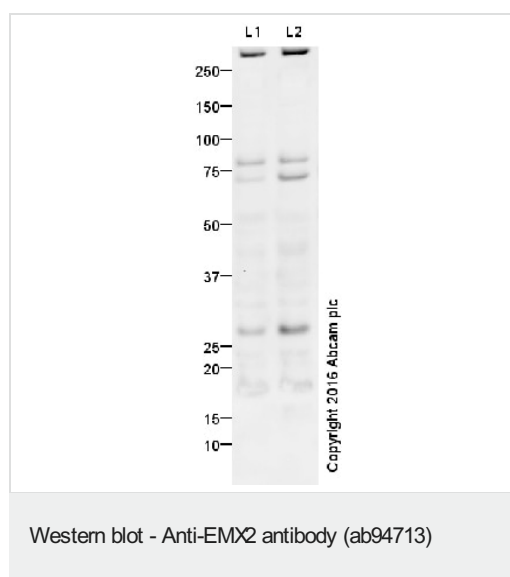
The Abpromise guarantee **Abpromise保証は、次のテスト済みアプリケーションにおけるab94713の使用に適用されます**
アプリケーションノートには、推奨の開始希釈率がありますが、適切な希釈率につきましてはご確認ください。

アプリケーション	Abreviews	特記事項
WB	★★★★★ (1)	Use a concentration of 1 µg/ml. Detects a band of approximately 28 kDa (predicted molecular weight: 28 kDa).

ターゲット情報

機能	Transcription factor, which in cooperation with EMX2, acts to generate the boundary between the roof and archipallium in the developing brain. May function in combinations with OTX1/2 to specify cell fates in the developing central nervous system.
組織特異性	Cerebral cortex.
関連疾患	Defects in EMX2 are the cause of schizencephaly (SCHZC) [MIM:269160]. Schizencephaly is an extremely rare human congenital disorder characterized by a full-thickness cleft within the cerebral hemispheres. These clefts are lined with gray matter and most commonly involve the parasylvian regions. Large portions of the cerebral hemispheres may be absent and replaced by cerebro-spinal fluid.
配列類似性	Belongs to the EMX homeobox family. Contains 1 homeobox DNA-binding domain.
細胞内局在	Nucleus.

画像



All lanes : Anti-EMX2 antibody (ab94713) at 1 µg/ml

Lane 1 : Mouse Hippocampus Tissue Lysate

Lane 2 : Brain (Mouse) Tissue Lysate

Lysates/proteins at 10 µg per lane.

Secondary

All lanes : Goat Anti-Rabbit IgG H&L (HRP) preadsorbed
(**ab97080**) at 1/5000 dilution

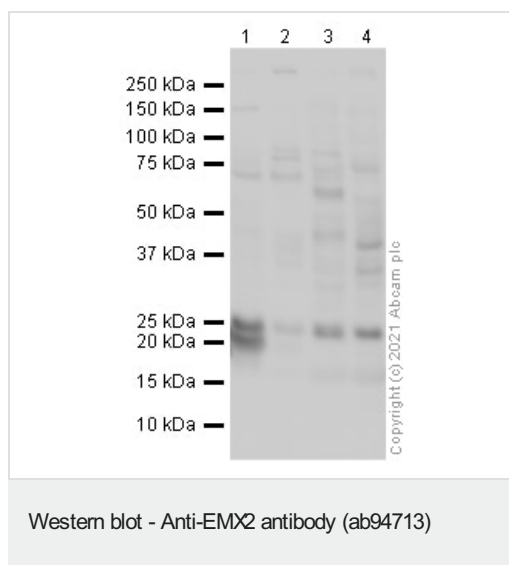
Developed using the ECL technique.

Performed under reducing conditions.

Predicted band size: 28 kDa

Additional bands at: 260 kDa (possible non-specific binding), 76 kDa (possible non-specific binding)

Exposure time: 16 minutes



All lanes : Anti-EMX2 antibody (ab94713) at 1 µg/ml

Lane 1 : Human Brain lysate

Lane 2 : Mouse Brain lysate

Lane 3 : NIH 3T3 whole cell lysate

Lane 4 : HepG2 whole cell lysate

Lysates/proteins at 20 µg per lane.

Secondary

All lanes : Goat Anti-Rabbit IgG H&L (HRP) at 1/50000 dilution

Predicted band size: 28 kDa

Observed band size: 28 kDa

Exposure time: 1 minute

Blocking buffer: 2% BSA

Gel type: MES

Additional bands: 15 kDa (possible non-specific binding), 75 kDa (possible non-specific binding)

Please note: All products are "FOR RESEARCH USE ONLY. NOT FOR USE IN DIAGNOSTIC PROCEDURES"

Our Abpromise to you: Quality guaranteed and expert technical support

- Replacement or refund for products not performing as stated on the datasheet
- Valid for 12 months from date of delivery
- Response to your inquiry within 24 hours
- We provide support in Chinese, English, French, German, Japanese and Spanish
- Extensive multi-media technical resources to help you
- We investigate all quality concerns to ensure our products perform to the highest standards

If the product does not perform as described on this datasheet, we will offer a refund or replacement. For full details of the Abpromise, please visit <https://www.abcam.co.jp/abpromise> or contact our technical team.

Terms and conditions

- Guarantee only valid for products bought direct from Abcam or one of our authorized distributors