


# Anti-ELOVL6/LCE antibody ab69857

**11 References**   **画像数 3**

### 製品の概要

製品名	Anti-ELOVL6/LCE antibody
製品の詳細	Rabbit polyclonal to ELOVL6/LCE
由来種	Rabbit
アプリケーション	<b>適用あり:</b> IHC-P, ICC/IF, WB
種交差性	<b>交差種:</b> Human <b>交差が予測される動物種:</b> Mouse, Rat 
免疫原	Synthetic peptide corresponding to Human ELOVL6/LCE (C terminal). Database link: <b><u>NP_076995</u></b> (Peptide available as <b><u>ab114079</u></b> )
ポジティブ・コントロール	WB: Human brain tissue lysate. IHC-P: Human brain tissue. ICC/IF: Human brain cells.
特記事項	<p>The Life Science industry has been in the grips of a reproducibility crisis for a number of years. Abcam is leading the way in addressing this with our range of recombinant monoclonal antibodies and knockout edited cell lines for gold-standard validation. Please check that this product meets your needs before purchasing.</p> <p>If you have any questions, special requirements or concerns, please send us an inquiry and/or contact our Support team ahead of purchase. Recommended alternatives for this product can be found below, along with publications, customer reviews and Q&amp;As</p>

### 製品の特性

製品の状態	Liquid
保存方法	Shipped at 4°C. Store at +4°C short term (1-2 weeks). Store at -20°C. Avoid freeze / thaw cycle.
バッファー	pH: 7.2 Preservative: 0.02% Sodium azide Constituent: PBS
精製度	Immunogen affinity purified
ポリ/モノ	ポリクローナル
アイソタイプ	IgG

### アプリケーション

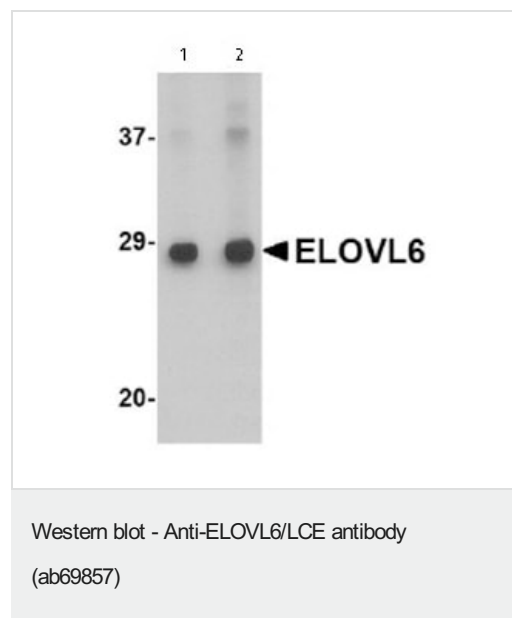
**The Abpromise guarantee**      **Abpromise保証は、次のテスト済みアプリケーションにおけるab69857の使用に適用されます**  
 アプリケーションノートには、推奨の開始希釈率がありますが、適切な希釈率につきましてはご検討ください。

アプリケーション	Abreviews	特記事項
IHC-P		Use a concentration of 5 µg/ml.
ICC/IF		Use a concentration of 1 µg/ml.
WB		Use a concentration of 1 - 2 µg/ml. Detects a band of approximately 28 kDa (predicted molecular weight: 31 kDa). Can be blocked with <b>ELOVL6/LCE peptide (ab114079)</b> .

## ターゲット情報

機能	Condensing enzyme that catalyzes the synthesis of saturated and monounsaturated fatty acids. Highest activity toward C16:0 acyl-CoAs.
組織特異性	Ubiquitous.
配列類似性	Belongs to the ELO family.
翻訳後修飾	N-Glycosylated.
細胞内局在	Endoplasmic reticulum membrane.

## 画像



**Lane 1 :** Anti-ELOVL6/LCE antibody (ab69857) at 1 µg/ml

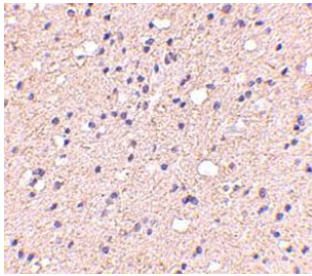
**Lane 2 :** Anti-ELOVL6/LCE antibody (ab69857) at 2 µg/ml

**All lanes :** Human brain tissue lysate

Lysates/proteins at 15 µg per lane.

**Predicted band size:** 31 kDa

**Observed band size:** 28 kDa



Immunohistochemistry of ELOVL6/LCE in human brain with ab69857 at 5 µg/ml.

Immunohistochemistry (Formalin/PFA-fixed paraffin-embedded sections) - Anti-ELOVL6/LCE antibody (ab69857)

Immunocytochemistry/ Immunofluorescence - Anti-ELOVL6/LCE antibody (ab69857)

Immunofluorescence of ELOVL6/LCE in Human Brain cells using ab69857 at 20 ug/ml.

**Please note:** All products are "FOR RESEARCH USE ONLY. NOT FOR USE IN DIAGNOSTIC PROCEDURES"

### Our Abpromise to you: Quality guaranteed and expert technical support

---

- Replacement or refund for products not performing as stated on the datasheet
- Valid for 12 months from date of delivery
- Response to your inquiry within 24 hours
- We provide support in Chinese, English, French, German, Japanese and Spanish
- Extensive multi-media technical resources to help you
- We investigate all quality concerns to ensure our products perform to the highest standards

If the product does not perform as described on this datasheet, we will offer a refund or replacement. For full details of the Abpromise, please visit <https://www.abcam.co.jp/abpromise> or contact our technical team.

### Terms and conditions

---

- Guarantee only valid for products bought direct from Abcam or one of our authorized distributors