

Anti-Elongation factor 1-gamma antibody [EPR7200] ab124994

リコンビナント **RabMAb**

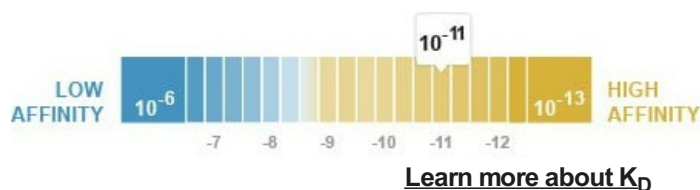
2 References 画像数 6

製品の概要

製品名	Anti-Elongation factor 1-gamma antibody [EPR7200]
製品の詳細	Rabbit monoclonal [EPR7200] to Elongation factor 1-gamma
由来種	Rabbit
アプリケーション	適用あり: Flow Cyt (Intra), WB, IHC-P, ICC/IF
種交差性	交差種: Mouse, Rat, Human
免疫原	Synthetic peptide within Human Elongation factor 1-gamma aa 50-150. The exact sequence is proprietary.
ポジティブ・コントロール	293T, HL60, C6, RAW 264.7, PC12, NIH 3T3, HepG2 and HeLa cell lysates; Human pancreatic adenocarcinoma tissue; HeLa cells.
特記事項	<p>This product is a recombinant monoclonal antibody, which offers several advantages including:</p> <ul style="list-style-type: none"> - High batch-to-batch consistency and reproducibility - Improved sensitivity and specificity - Long-term security of supply - Animal-free production <p>For more information see here.</p> <p>Our RabMAb[®] technology is a patented hybridoma-based technology for making rabbit monoclonal antibodies. For details on our patents, please refer to RabMAb[®] patents.</p>

製品の特性

製品の状態	Liquid
保存方法	Shipped at 4°C. Store at -20°C. Stable for 12 months at -20°C.
解離定数 (K _D 値)	K _D = 1.31 x 10 ⁻¹¹ M



バッファー	pH: 7.20
	Preservative: 0.01% Sodium azide

	Constituents: 9% PBS, 40% Glycerol (glycerin, glycerine), 0.05% BSA, 50% Tissue culture supernatant
精製度	Protein A purified
ポリ/モノ	モノクローナル
クローン名	EPR7200
アイソタイプ	IgG

アプリケーション

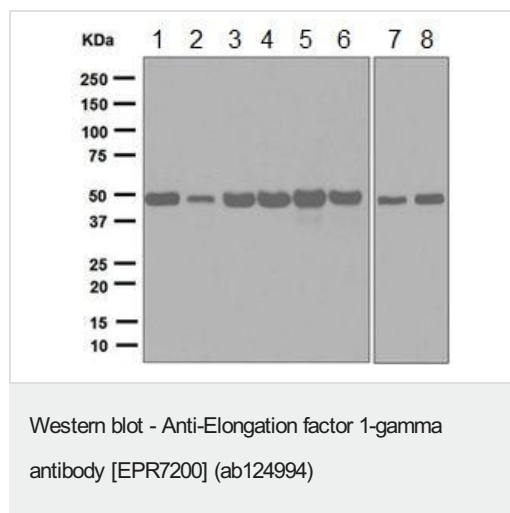
The Abpromise guarantee Abpromise保証は、次のテスト済みアプリケーションにおけるab124994の使用に適用されます
アプリケーションノートには、推奨の開始希釈率がありますが、適切な希釈率につきましてはご確認ください。

アプリケーション	Abreviews	特記事項
Flow Cyt (Intra)		1/1000 - 1/10000. ab172730 - Rabbit monoclonal IgG, is suitable for use as an isotype control with this antibody.
WB		1/10000 - 1/50000. Detects a band of approximately 50 kDa (predicted molecular weight: 50 kDa).
IHC-P		1/250 - 1/500. Perform heat mediated antigen retrieval before commencing with IHC staining protocol. Heat up to 98 degrees C, below boiling, and then let cool for 10-20 min.
ICC/IF		1/100 - 1/250.

ターゲット情報

機能	Probably plays a role in anchoring the complex to other cellular components.
組織特異性	Highly expressed in pancreatic tumor tissue and to a lesser extent in normal kidney, intestine, pancreas, stomach, lung, brain, spleen and liver.
配列類似性	Contains 1 EF-1-gamma C-terminal domain. Contains 1 GST C-terminal domain. Contains 1 GST N-terminal domain.

画像



All lanes : Anti-Elongation factor 1-gamma antibody [EPR7200] (ab124994) at 1/10000 dilution

Lane 1 : 293T cell lysate

Lane 2 : HL-60 cell lysate

Lane 3 : C6 cell lysate

Lane 4 : RAW 264.7 cell lysate

Lane 5 : PC-12 cell lysate

Lane 6 : NIH/3T3 cell lysate

Lane 7 : HepG2 cell lysate

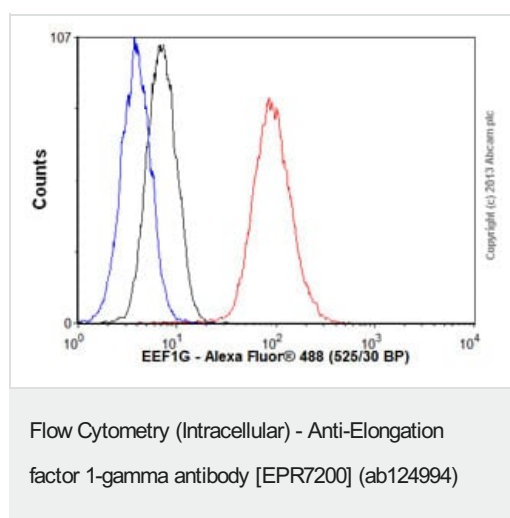
Lane 8 : HeLa cell lysate

Lysates/proteins at 10 µg per lane.

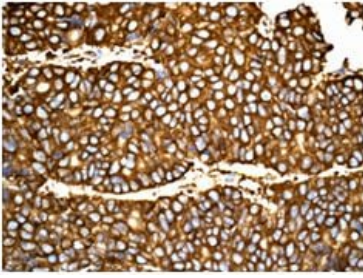
Secondary

All lanes : Goat anti-rabbit HRP-conjugated at 1/2000 dilution

Predicted band size: 50 kDa



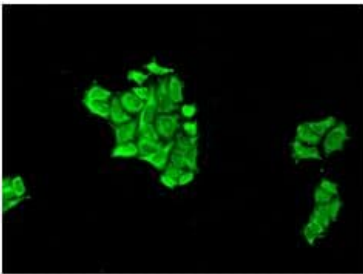
Overlay histogram showing HeLa cells stained with ab124994 (red line). The cells were fixed with 80% methanol (5 min) and then permeabilized with 0.1% PBS-Tween for 20 min. The cells were then incubated in 1x PBS / 10% normal goat serum / 0.3M glycine to block non-specific protein-protein interactions followed by the antibody (ab124994, 1/10000 dilution) for 30 min at 22°C. The secondary antibody used was Alexa Fluor® 488 goat anti-rabbit IgG (H&L) ([ab150077](#)) at 1/2000 dilution for 30 min at 22°C. Isotype control antibody (black line) was rabbit IgG (monoclonal) (0.1µg/1x10⁶ cells) used under the same conditions. Unlabelled sample (blue line) was also used as a control. Acquisition of >5,000 events were collected using a 20mW Argon ion laser (488nm) and 525/30 bandpass filter.



Immunohistochemistry (Formalin/PFA-fixed paraffin-embedded sections) - Anti-Elongation factor 1-gamma antibody [EPR7200] (ab124994)

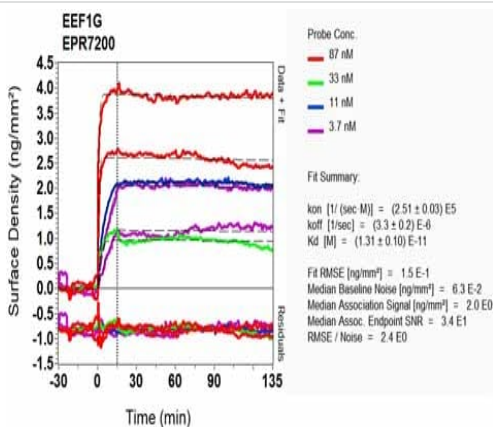
ab124994 at 1/250 dilution staining Elongation factor 1-gamma in paraffin-embedded Human pancreatic adenocarcinoma tissue by Immunohistochemistry.

Perform heat mediated antigen retrieval before commencing with IHC staining protocol.



Immunocytochemistry/ Immunofluorescence - Anti-Elongation factor 1-gamma antibody [EPR7200] (ab124994)

ab124994 at 1/100 dilution staining Elongation factor 1-gamma in HeLa cells by Immunofluorescence.



OIR-D Scanning - Anti-Elongation factor 1-gamma antibody [EPR7200] (ab124994)

Equilibrium disassociation constant (K_D)

Learn more about K_D

[Click here to learn more about \$K_D\$](#)

Why choose a recombinant antibody?



Research with confidence
Consistent and reproducible results



Long-term and scalable supply
Recombinant technology



Success from the first experiment
Confirmed specificity



Ethical standards compliant
Animal-free production

Anti-Elongation factor 1-gamma antibody [EPR7200]
(ab124994)

Please note: All products are "FOR RESEARCH USE ONLY. NOT FOR USE IN DIAGNOSTIC PROCEDURES"

Our Abpromise to you: Quality guaranteed and expert technical support

- Replacement or refund for products not performing as stated on the datasheet
- Valid for 12 months from date of delivery
- Response to your inquiry within 24 hours
- We provide support in Chinese, English, French, German, Japanese and Spanish
- Extensive multi-media technical resources to help you
- We investigate all quality concerns to ensure our products perform to the highest standards

If the product does not perform as described on this datasheet, we will offer a refund or replacement. For full details of the Abpromise, please visit <https://www.abcam.co.jp/abpromise> or contact our technical team.

Terms and conditions

- Guarantee only valid for products bought direct from Abcam or one of our authorized distributors