


Anti-Elongation factor 1-gamma antibody ab72368

★★★★★ [1 Abreviews](#) [5 References](#) [画像数 5](#)

製品の概要

製品名	Anti-Elongation factor 1-gamma antibody
製品の詳細	Rabbit polyclonal to Elongation factor 1-gamma
由来種	Rabbit
アプリケーション	適用あり: IHC-P, WB, IP, ICC/IF
種交差性	交差種: Mouse, Human 交差が予測される動物種: Chimpanzee, Rhesus monkey, Gorilla 
免疫原	Synthetic peptide corresponding to Human Elongation factor 1-gamma aa 200-300. Database link: P26641
ポジティブ・コントロール	WB: Whole cell lysate from Hela, 293T, NIH3T3. IHC-P: Human colon carcinoma and testis tissue. ICC/IF: Hela whole cell lysate.
特記事項	<p>The Life Science industry has been in the grips of a reproducibility crisis for a number of years. Abcam is leading the way in addressing this with our range of recombinant monoclonal antibodies and knockout edited cell lines for gold-standard validation. Please check that this product meets your needs before purchasing.</p> <p>If you have any questions, special requirements or concerns, please send us an inquiry and/or contact our Support team ahead of purchase. Recommended alternatives for this product can be found below, along with publications, customer reviews and Q&As</p>

製品の特性

製品の状態	Liquid
保存方法	Shipped at 4°C. Upon delivery aliquot and store at -20°C. Avoid freeze / thaw cycles.
バッファー	pH: 6.8 Preservative: 0.09% Sodium azide Constituents: 0.1% BSA, Tris buffered saline
精製度	Immunogen affinity purified
ポリ/モノ	ポリクローナル
アイソタイプ	IgG

アプリケーション

The Abpromise guarantee

Abpromise保証は、次のテスト済みアプリケーションにおけるab72368の使用に適用されます

アプリケーションノートには、推奨の開始希釈率がありますが、適切な希釈率につきましてはご検討ください。

アプリケーション	Abreviews	特記事項
IHC-P		Use a concentration of 1 µg/ml. Perform heat mediated antigen retrieval with citrate buffer pH 6 before commencing with IHC staining protocol.
WB	★★★★★ (1)	1/2000 - 1/10000. Detects a band of approximately 50 kDa (predicted molecular weight: 50 kDa).
IP		Use at 2-5 µg/mg of lysate.
ICC/IF		Use a concentration of 1 µg/ml.

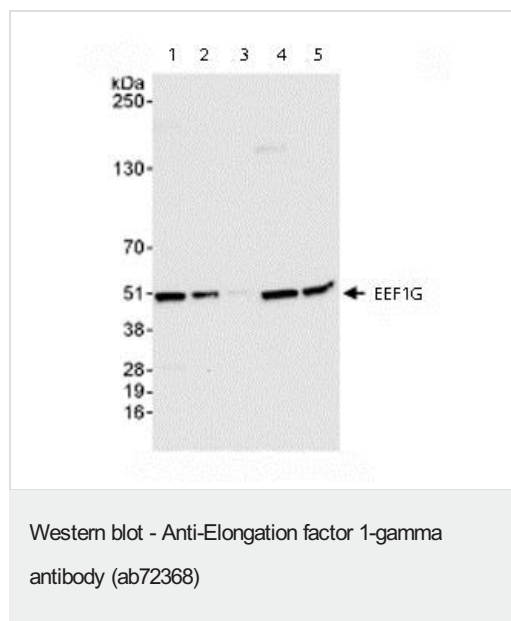
ターゲット情報

機能 Probably plays a role in anchoring the complex to other cellular components.

組織特異性 Highly expressed in pancreatic tumor tissue and to a lesser extent in normal kidney, intestine, pancreas, stomach, lung, brain, spleen and liver.

配列類似性 Contains 1 EF-1-gamma C-terminal domain.
Contains 1 GST C-terminal domain.
Contains 1 GST N-terminal domain.

画像



All lanes : Anti-Elongation factor 1-gamma antibody (ab72368) at 0.04 µg/ml

Lane 1 : Whole cell lysate from HeLa cells at 50 µg

Lane 2 : Whole cell lysate from HeLa cells at 15 µg

Lane 3 : Whole cell lysate from HeLa cells at 5 µg

Lane 4 : Whole cell lysate from 293T cells at 50 µg

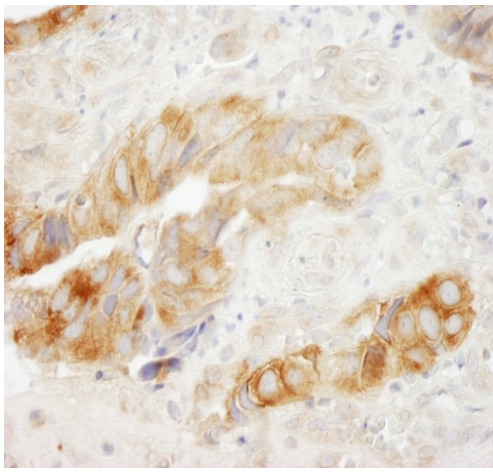
Lane 5 : Whole cell lysate from NIH3T3 cells at 50 µg

Developed using the ECL technique.

Predicted band size: 50 kDa

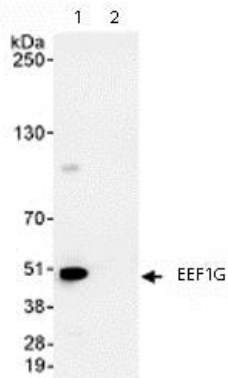
Observed band size: 50 kDa

Exposure time: 30 seconds



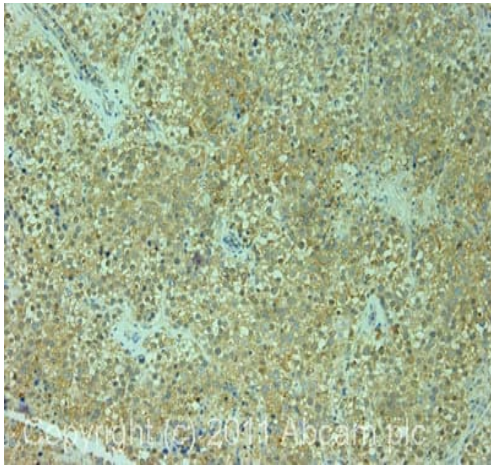
Immunohistochemistry (Formalin/PFA-fixed paraffin-embedded sections) analysis of human colon carcinoma tissue labelling Elongation factor 1-gamma with ab72368 at 1/200 (1 µg/ml).
Detection: DAB.

Immunohistochemistry (Formalin/PFA-fixed paraffin-embedded sections) - Anti-Elongation factor 1-gamma antibody (ab72368)



Immunoprecipitation/ Western Blot of Elongation factor 1-gamma.
Lane 1: ab72368 at 3µg/mg whole cell lysate. Lane 2: Control IgG.
ab72368 at 1µg/ml for WB. Whole cell lysate from Hela cells at 1mg for IP, 20% of IP loaded. Chemiluminescence with an exposure time of 30 seconds.

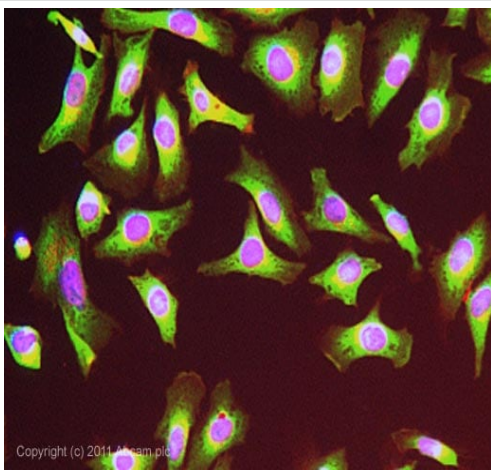
Immunoprecipitation - Anti-Elongation factor 1-gamma antibody (ab72368)



Immunohistochemistry (Formalin/PFA-fixed paraffin-embedded sections) - Anti-Elongation factor 1-gamma antibody (ab72368)

IHC image of ab72368 staining in human normal testis formalin fixed paraffin embedded tissue section, performed on a Leica Bond™ system using the standard protocol F. The section was pre-treated using heat mediated antigen retrieval with sodium citrate buffer (pH6, epitope retrieval solution 1) for 20 mins. The section was then incubated with ab72368, 1 µg/ml, for 15 mins at room temperature and detected using an HRP conjugated compact polymer system. DAB was used as the chromogen. The section was then counterstained with haematoxylin and mounted with DPX.

For other IHC staining systems (automated and non-automated) customers should optimize variable parameters such as antigen retrieval conditions, primary antibody concentration and antibody incubation times.



Immunocytochemistry/ Immunofluorescence - Anti-Elongation factor 1-gamma antibody (ab72368)

ICC image of ab72368 stained HeLa cells. The cells were 4% formaldehyde fixed (10 min) and then incubated in 1% BSA / 10% normal goat serum / 0.3M glycine in 0.1% PBS-Tween for 1h to permeabilise the cells and block non-specific protein-protein interactions. The cells were then incubated with the antibody (ab72368, 1 µg/mL) overnight at +4°C. The secondary antibody (green) was **ab96899**, DyLight® 488 goat anti-rabbit IgG (H+L) used at a 1/250 dilution for 1h. Alexa Fluor® 594 WGA was used to label plasma membranes (red) at a 1/200 dilution for 1h. DAPI was used to stain the cell nuclei (blue) at a concentration of 1.43 µM.

Please note: All products are "FOR RESEARCH USE ONLY. NOT FOR USE IN DIAGNOSTIC PROCEDURES"

Our Abpromise to you: Quality guaranteed and expert technical support

- Replacement or refund for products not performing as stated on the datasheet
- Valid for 12 months from date of delivery
- Response to your inquiry within 24 hours
- We provide support in Chinese, English, French, German, Japanese and Spanish
- Extensive multi-media technical resources to help you
- We investigate all quality concerns to ensure our products perform to the highest standards

If the product does not perform as described on this datasheet, we will offer a refund or replacement. For full details of the Abpromise, please visit <https://www.abcam.co.jp/abpromise> or contact our technical team.

Terms and conditions

- Guarantee only valid for products bought direct from Abcam or one of our authorized distributors