


Anti-ELMO2 antibody ab2240

[7 References](#) [画像数 5](#)

製品の概要

製品名	Anti-ELMO2 antibody
製品の詳細	Goat polyclonal to ELMO2
由来種	Goat
アプリケーション	適用あり: IHC-P, WB, Flow Cyt, ICC/IF
種交差性	交差種: Mouse, Rat, Human 交差が予測される動物種: Cow, Dog, Pig 
免疫原	Synthetic peptide: PKEPSSYDFVYHYG, corresponding to C terminal amino acids 707-720 of Human ELMO2. Run BLAST with Expasy Run BLAST with NCBI
ポジティブ・コントロール	Flow Cyt: A549 cells ICC/IF: U2OS and A549 cells WB: Jurkat, HEK293, RAW264.7 and KNRK cell lysate; Human cerebellum and rat brain tissue lysate
特記事項	<p>The Life Science industry has been in the grips of a reproducibility crisis for a number of years. Abcam is leading the way in addressing this with our range of recombinant monoclonal antibodies and knockout edited cell lines for gold-standard validation. Please check that this product meets your needs before purchasing.</p> <p>If you have any questions, special requirements or concerns, please send us an inquiry and/or contact our Support team ahead of purchase. Recommended alternatives for this product can be found below, along with publications, customer reviews and Q&As</p>

製品の特性

製品の状態	Liquid
保存方法	Shipped at 4°C. Upon delivery aliquot and store at -20°C or -80°C. Avoid repeated freeze / thaw cycles.
バッファー	pH: 7.30 Preservative: 0.02% Sodium azide Constituents: 0.05% Tris, 0.5% BSA
精製度	Immunogen affinity purified
特記事項 (精製)	Purified from goat serum by ammonium sulphate precipitation followed by antigen affinity chromatography using the immunizing peptide.
ポリ/モノ	ポリクローナル

アプリケーション

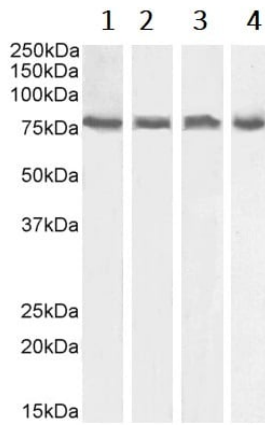
The Abpromise guarantee Abpromise保証は、次のテスト済みアプリケーションにおけるab2240の使用に適用されます
アプリケーションノートには、推奨の開始希釈率がありますが、適切な希釈率につきましてはご検討ください。

アプリケーション	Abreviews	特記事項
IHC-P		Use a concentration of 3 - 6 µg/ml. Perform heat mediated antigen retrieval with citrate buffer pH 6 before commencing with IHC staining protocol.
WB		Use a concentration of 1 - 3 µg/ml. 1 hour primary incubation is recommended for this product.
Flow Cyt		Use a concentration of 10 µg/ml.
ICC/IF		Use a concentration of 10 µg/ml.

ターゲット情報

機能	Involved in cytoskeletal rearrangements required for phagocytosis of apoptotic cells and cell motility. Acts in association with DOCK1 and CRK. Was initially proposed to be required in complex with DOCK1 to activate Rac Rho small GTPases. May enhance the guanine nucleotide exchange factor (GEF) activity of DOCK1.
組織特異性	Widely expressed, with a higher expression in skeletal muscle, kidney and placenta.
配列類似性	Contains 1 ELMO domain. Contains 1 PH domain.
細胞内局在	Cytoplasm. Cytoplasm > cytosol. Membrane.

画像



Western blot - Anti-ELMO2 antibody (ab2240)

All lanes : Anti-ELMO2 antibody (ab2240) at 0.5 µg/ml

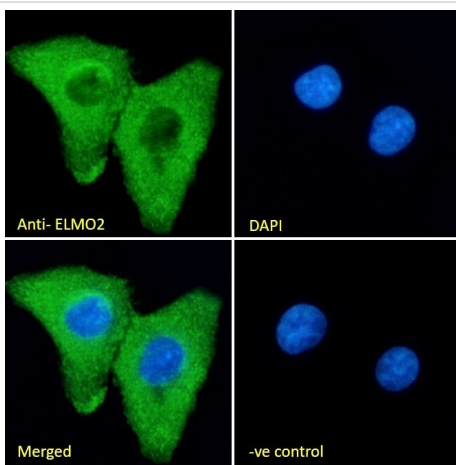
Lane 1 : Jurkat cell lysate

Lane 2 : HEK293 cell lysate

Lane 3 : RAW264.7 cell lysate

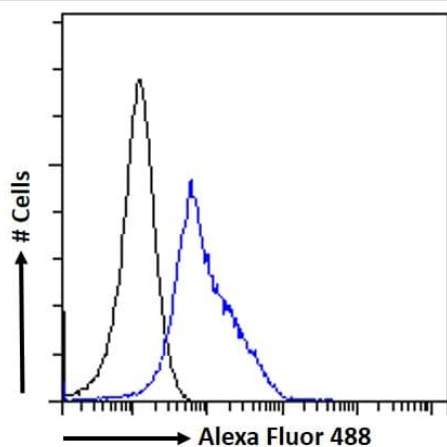
Lane 4 : KNRK cell lysate

Detected by chemiluminescence.



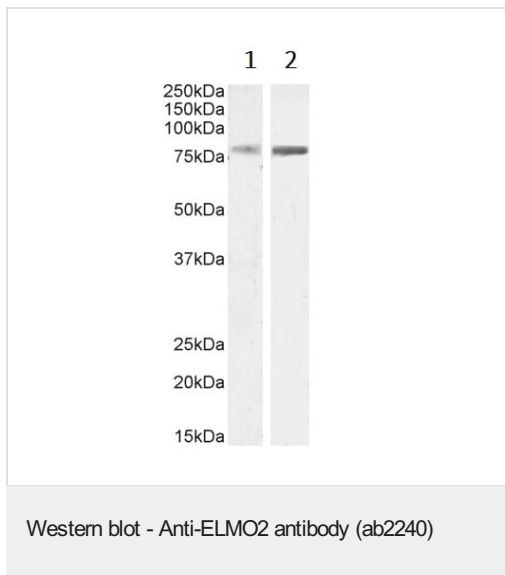
Immunocytochemistry/ Immunofluorescence - Anti-ELMO2 antibody (ab2240)

Immunocytochemistry/Immunofluorescence analysis of paraformaldehyde fixed A549 cells, permeabilized with 0.15% Triton. Primary incubation 1hr (10µg/mL) followed by Alexa Fluor 488 secondary antibody (2µg/mL), showing cytoplasmic staining. The nuclear stain is DAPI (blue). Negative control: Unimmunized goat IgG (10µg/mL) followed by Alexa Fluor 488 secondary antibody (2µg/mL).



Flow Cytometry - Anti-ELMO2 antibody (ab2240)

Flow cytometric analysis of paraformaldehyde fixed A549 cells (blue line), permeabilized with 0.5% Triton. Primary incubation 1hr (10µg/mL) followed by Alexa Fluor 488 secondary antibody (1µg/mL). IgG control: Unimmunized goat IgG (black line) followed by Alexa Fluor 488 secondary antibody.



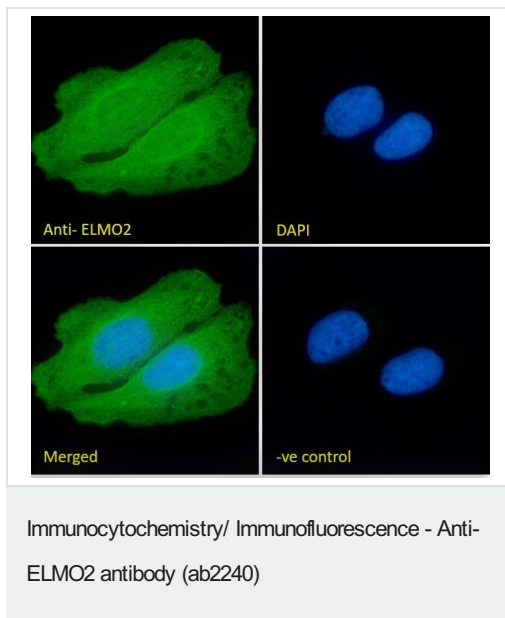
All lanes : Anti-ELMO2 antibody (ab2240) at 0.5 µg/ml

Lane 1 : Human cerebellum tissue lysate

Lane 2 : Rat brain tissue lysate

Lysates/proteins at 35 µg per lane.

Detected by chemiluminescence.



Immunocytochemistry/Immunofluorescence analysis of paraformaldehyde fixed U2OS cells, permeabilized with 0.15% Triton. Primary incubation 1hr (10µg/mL) followed by Alexa Fluor 488 secondary antibody (2µg/mL), showing cytoplasmic and nuclear staining. The nuclear stain is DAPI (blue). Negative control: Unimmunized goat IgG (10µg/mL) followed by Alexa Fluor 488 secondary antibody (2µg/mL).

Please note: All products are "FOR RESEARCH USE ONLY. NOT FOR USE IN DIAGNOSTIC PROCEDURES"

Our Abpromise to you: Quality guaranteed and expert technical support

- Replacement or refund for products not performing as stated on the datasheet
- Valid for 12 months from date of delivery
- Response to your inquiry within 24 hours
- We provide support in Chinese, English, French, German, Japanese and Spanish
- Extensive multi-media technical resources to help you
- We investigate all quality concerns to ensure our products perform to the highest standards

If the product does not perform as described on this datasheet, we will offer a refund or replacement. For full details of the Abpromise, please visit <https://www.abcam.co.jp/abpromise> or contact our technical team.

Terms and conditions

- Guarantee only valid for products bought direct from Abcam or one of our authorized distributors