


Anti-ELL2 antibody ab115027

1 [References](#) **2** [画像数](#)

製品の概要

製品名	Anti-ELL2 antibody
製品の詳細	Rabbit polyclonal to ELL2
由来種	Rabbit
アプリケーション	適用あり: WB, IP
種交差性	交差種: Human 交差が予測される動物種: Rat, Rabbit, Horse, Guinea pig, Dog, Pig, Xenopus laevis, Chimpanzee, Rhesus monkey, Gorilla, Orangutan, Xenopus tropicalis, Platypus 
免疫原	Synthetic peptide, corresponding to a region within amino acids 400-450 of Human ELL2 (NP_036213.2).
ポジティブ・コントロール	HeLa whole cell lysate (ab150035)
特記事項	<p>The Life Science industry has been in the grips of a reproducibility crisis for a number of years. Abcam is leading the way in addressing this with our range of recombinant monoclonal antibodies and knockout edited cell lines for gold-standard validation. Please check that this product meets your needs before purchasing.</p> <p>If you have any questions, special requirements or concerns, please send us an inquiry and/or contact our Support team ahead of purchase. Recommended alternatives for this product can be found below, along with publications, customer reviews and Q&As</p>

製品の特性

製品の状態	Liquid
保存方法	Shipped at 4°C. Upon delivery aliquot and store at -20°C. Avoid freeze / thaw cycles.
バッファー	pH: 7 Preservative: 0.09% Sodium azide Constituent: 99% Tris citrate/phosphate
精製度	pH 7 to 8 Immunogen affinity purified
特記事項 (精製)	ab115027 was affinity purified using an epitope specific to ELL2 immobilized on solid support.
ポリ/モノ	ポリクローナル

アプリケーション

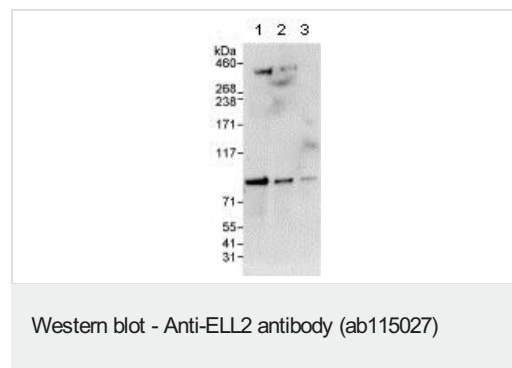
The Abpromise guarantee Abpromise保証は、 次のテスト済みアプリケーションにおけるab115027の使用に適用されます
アプリケーションノートには、推奨の開始希釈率がありますが、適切な希釈率につきましてはご確認ください。

アプリケーション	Abreviews	特記事項
WB		1/2000 - 1/10000. Predicted molecular weight: 72 kDa.
IP		Use at 2-5 µg/mg of lysate.

ターゲット情報

機能	Elongation factor that can increase the catalytic rate of RNA polymerase II transcription by suppressing transient pausing by the polymerase at multiple sites along the DNA.
配列類似性	Belongs to the ELL/occludin family.
細胞内局在	Nucleus.

画像



All lanes : Anti-ELL2 antibody (ab115027) at 0.1 µg/ml

Lane 1 : HeLa whole cell lysate at 50 µg

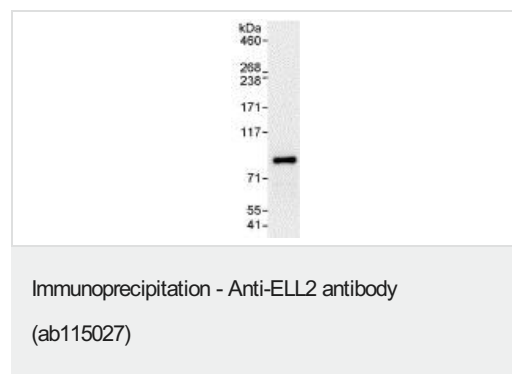
Lane 2 : HeLa whole cell lysate at 15 µg

Lane 3 : HeLa whole cell lysate at 5 µg

Developed using the ECL technique.

Predicted band size: 72 kDa

Exposure time: 30 seconds



Detection of ELL2 by Western Blot of Immunoprecipitate.

ab115027, at 1 µg/ml, staining ELL2 in HeLa whole cell lysate immunoprecipitated using ab115027 at 3 µg/mg lysate (1 mg/IP; 20% of IP loaded/lane).

Detection: Chemiluminescence with an exposure time of 30 seconds.

Please note: All products are "FOR RESEARCH USE ONLY. NOT FOR USE IN DIAGNOSTIC PROCEDURES"

Our Abpromise to you: Quality guaranteed and expert technical support

- Replacement or refund for products not performing as stated on the datasheet
- Valid for 12 months from date of delivery
- Response to your inquiry within 24 hours
- We provide support in Chinese, English, French, German, Japanese and Spanish
- Extensive multi-media technical resources to help you
- We investigate all quality concerns to ensure our products perform to the highest standards

If the product does not perform as described on this datasheet, we will offer a refund or replacement. For full details of the Abpromise, please visit <https://www.abcam.co.jp/abpromise> or contact our technical team.

Terms and conditions

- Guarantee only valid for products bought direct from Abcam or one of our authorized distributors