

Anti-ELK4 antibody ab86002

1 References 画像数 1

医薬用外劇物

製品の概要

製品名	Anti-ELK4 antibody
製品の詳細	Rabbit polyclonal to ELK4
由来種	Rabbit
アプリケーション	適用あり: WB
種交差性	交差種: Recombinant fragment
免疫原	Three synthetic peptides derived from human ELK4, conjugated to KLH.
特記事項	<p>The Life Science industry has been in the grips of a reproducibility crisis for a number of years. Abcam is leading the way in addressing this with our range of recombinant monoclonal antibodies and knockout edited cell lines for gold-standard validation. Please check that this product meets your needs before purchasing.</p> <p>If you have any questions, special requirements or concerns, please send us an inquiry and/or contact our Support team ahead of purchase. Recommended alternatives for this product can be found below, along with publications, customer reviews and Q&amp;As</p>

製品の特性

製品の状態	Liquid
保存方法	Shipped at 4°C. Upon delivery aliquot and store at -20°C or -80°C. Avoid repeated freeze / thaw cycles.
バッファー	Preservative: 0.01% Thimerosal (merthiolate)
精製度	Whole antiserum
特記事項(精製)	Crude serum, final bleed
ポリ/モノ	ポリクローナル
アイソタイプ	IgG

アプリケーション

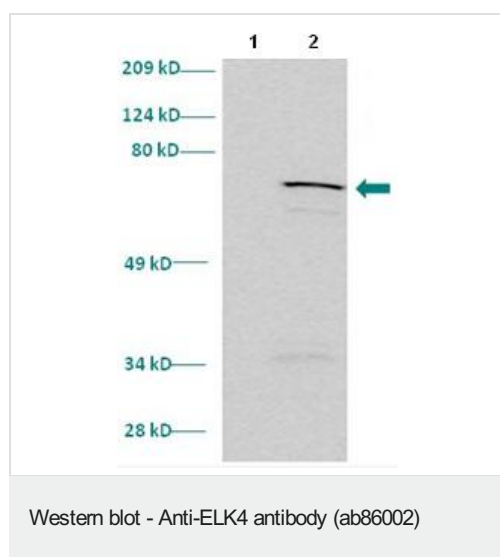
The Abpromise guarantee      Abpromise保証は、次のテスト済みアプリケーションにおけるab86002の使用に適用されます  
アプリケーションノートには、推奨の開始希釈率がありますが、適切な希釈率につきましてはご検討ください。

アプリケーション	Abreviews	特記事項
WB		1/1000. Predicted molecular weight: 47 kDa.

## ターゲット情報

機能	Forms a ternary complex with the serum response factor (SRF). Requires DNA-bound SRF for ternary complex formation and makes extensive DNA contacts to the 5' side of SRF, but does not bind DNA autonomously.
配列類似性	Belongs to the ETS family. Contains 1 ETS DNA-binding domain.
細胞内局在	Nucleus.

## 画像



**All lanes :** Anti-ELK4 antibody (ab86002) at 1/1000 dilution (in 5% non-fat milk-PBST solution incubated for 60 minutes)

**Lane 1 :** uninduced culture of *E. coli* (plus anti thio at 1/5000 dilution)

**Lane 2 :** induced culture of *E. coli* (plus anti thio at 1/5000 dilution)

### Secondary

**All lanes :** anti-Rabbit IgG HRP conjugated incubated for 60 minutes at 1/1000 dilution

**Predicted band size:** 47 kDa

**Observed band size:** 61 kDa

Gel concentration: 10%

The actual band molecular weight is the result of the target protein ELK4 (47 kDa) attached to a tag (14 kDa).

**Please note:** All products are "FOR RESEARCH USE ONLY. NOT FOR USE IN DIAGNOSTIC PROCEDURES"

## Our Abpromise to you: Quality guaranteed and expert technical support

- Replacement or refund for products not performing as stated on the datasheet
- Valid for 12 months from date of delivery

- Response to your inquiry within 24 hours
- We provide support in Chinese, English, French, German, Japanese and Spanish
- Extensive multi-media technical resources to help you
- We investigate all quality concerns to ensure our products perform to the highest standards

If the product does not perform as described on this datasheet, we will offer a refund or replacement. For full details of the Abpromise, please visit <https://www.abcam.co.jp/abpromise> or contact our technical team.

#### **Terms and conditions**

---

- Guarantee only valid for products bought direct from Abcam or one of our authorized distributors