


### Anti-ELK1 antibody [E277] ab32106

KO 評価済 リコンビナント RabMAb

[46 References](#) [画像数 7](#)

#### 製品の概要

製品名	Anti-ELK1 antibody [E277]
製品の詳細	Rabbit monoclonal [E277] to ELK1
由来種	Rabbit
特異性	This antibody does not cross react with other ETS family members
アプリケーション	<b>適用あり:</b> Flow Cyt (Intra), WB, IHC-P, ICC/IF
種交差性	<b>交差種:</b> Human <b>交差が予測される動物種:</b> Mouse, Rat 
免疫原	Synthetic peptide. This information is proprietary to Abcam and/or its suppliers.
エピトープ	ab32106 reacts with an epitope located in the C terminal region of ELK1.
ポジティブ・コントロール	IHC-P: Human breast carcinoma ICC/IF: A549 cells WB: HeLa, MCF7 and HAP1 cell lysates. Flow Cyt (intra): HeLa cells.
特記事項	This product is a recombinant monoclonal antibody, which offers several advantages including: <ul style="list-style-type: none"><li>- High batch-to-batch consistency and reproducibility</li><li>- Improved sensitivity and specificity</li><li>- Long-term security of supply</li><li>- Animal-free production</li></ul> For more information <a href="#">see here</a> . Our RabMAb <sup>®</sup> technology is a patented hybridoma-based technology for making rabbit monoclonal antibodies. For details on our patents, please refer to <a href="#">RabMAb<sup>®</sup> patents</a> .

#### 製品の特性

製品の状態	Liquid
保存方法	Shipped at 4°C. Store at +4°C short term (1-2 weeks). Upon delivery aliquot. Store at -20°C. Avoid freeze / thaw cycle.
バッファー	pH: 7.20 Preservative: 0.01% Sodium azide Constituents: 49% PBS, 50% Glycerol (glycerin, glycerine), 0.05% BSA
精製度	Protein A purified

ポリ/モノ	モノクローナル
クローン名	E277
アイソタイプ	IgG

## アプリケーション

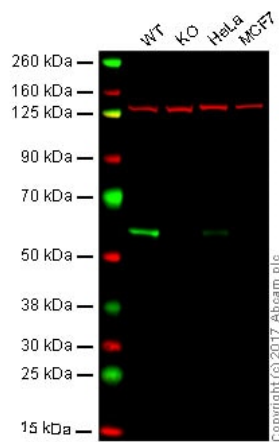
The Abpromise guarantee **Abpromise保証は、次のテスト済みアプリケーションにおけるab32106の使用に適用されます**  
 アプリケーションノートには、推奨の開始希釈率がありますが、適切な希釈率につきましてはご検討ください。

アプリケーション	Abreviews	特記事項
Flow Cyt (Intra)		1/20. <b>ab172730</b> - Rabbit monoclonal IgG, is suitable for use as an isotype control with this antibody.
WB		1/500. Detects a band of approximately 62 kDa (predicted molecular weight: 45 kDa).
IHC-P		1/50. Perform heat mediated antigen retrieval with citrate buffer pH 6 before commencing with IHC staining protocol.
ICC/IF		1/500.

## ターゲット情報

機能	Stimulates transcription. Binds to purine-rich DNA sequences. Can form a ternary complex with the serum response factor and the ETS and SRF motifs of the fos serum response element.
組織特異性	Lung and testis.
配列類似性	Belongs to the ETS family. Contains 1 ETS DNA-binding domain.
翻訳後修飾	Sumoylation represses transcriptional activator activity as it results in recruitment of HDAC2 to target gene promoters which leads to decreased histone acetylation and reduced transactivator activity. It also regulates nuclear retention. On mitogenic stimulation, phosphorylated on C-terminal serine and threonine residues by MAPK1. Ser-383 and Ser-389 are the preferred sites for MAPK1. In vitro, phosphorylation by MAPK1 potentiates ternary complex formation with the serum responses factors, SRE and SRF. Phosphorylation leads to loss of sumoylation and restores transcriptional activator activity.
細胞内局在	Nucleus.

## 画像



Western blot - Anti-ELK1 antibody [E277] (ab32106)

**Lane 1:** Wild-type HAP1 whole cell lysate (20  $\mu$ g)

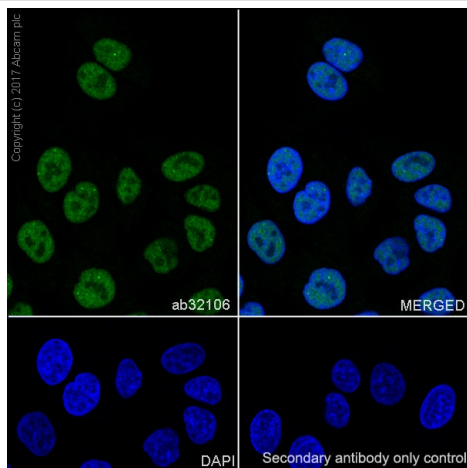
**Lane 2:** ELK1 knockout HAP1 whole cell lysate (20  $\mu$ g)

**Lane 3:** HeLa positive whole cell lysate (21  $\mu$ g)

**Lane 4:** MCF7 negative whole cell lysate (20  $\mu$ g)

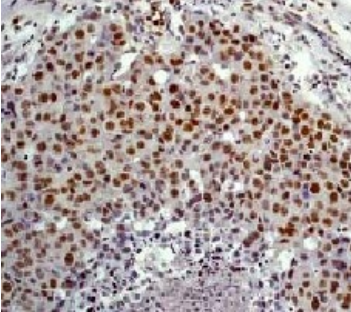
**Lanes 1 - 4:** Merged signal (red and green). Green - ab32106 observed at 55 kDa. Red - loading control, **ab18058**, observed at 130 kDa.

ab32106 was shown to specifically react with ELK1 in wild-type HAP1 cells as signal was lost in ELK1 knockout cells. Wild-type and ELK1 knockout samples were subjected to SDS-PAGE. Ab32106 and **ab18058** (Mouse anti-Vinculin loading control) were incubated overnight at 4°C at 1/500 dilution and 1/20000 dilution respectively. Blots were developed with Goat anti-Rabbit IgG H&L (IRDye® 800CW) preabsorbed **ab216773** and Goat anti-Mouse IgG H&L (IRDye® 680RD) preabsorbed **ab216776** secondary antibodies at 1/10000 dilution for 1 hour at room temperature before imaging.



Immunocytochemistry/ Immunofluorescence - Anti-ELK1 antibody [E277] (ab32106)

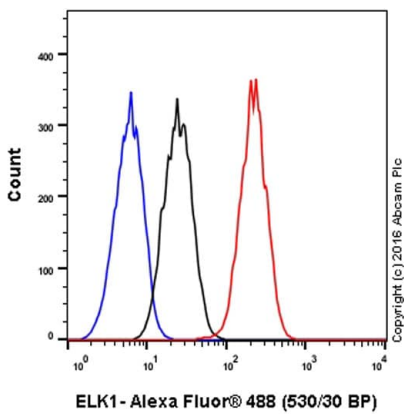
Immunocytochemistry/ Immunofluorescence analysis of A549 (human lung carcinoma epithelial cell) cells labeling ELK1 with purified ab32106 at 1/500 dilution (3.8  $\mu$ g/mL). Cells were fixed in 4% Paraformaldehyde and permeabilized with 0.1% tritonX-100. Goat anti rabbit IgG (Alexa Fluor® 488, **ab150077**) was used as the secondary antibody at 1/1000 (2  $\mu$ g/mL) dilution. DAPI (blue) was used as nuclear counterstain.



Immunohistochemistry (Formalin/PFA-fixed paraffin-embedded sections) - Anti-ELK1 antibody [E277] (ab32106)

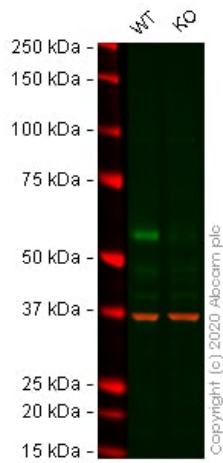
Immunohistochemical analysis of paraffin embedded human breast carcinoma using ab32106 at a dilution of 1/50

Perform heat mediated antigen retrieval with citrate buffer pH 6 before commencing with IHC staining protocol.



Flow Cytometry (Intracellular) - Anti-ELK1 antibody [E277] (ab32106)

Intracellular Flow Cytometry analysis of HeLa (human cervix adenocarcinoma) cells labeling ELK1 with unpurified ab32106 at 1/20 dilution (10ug/mL) (red). Cells were fixed with 4% paraformaldehyde and permeabilised with 90% methanol. A Goat anti rabbit IgG (Alexa Fluor® 488) at 1/2000 dilution was used as the secondary antibody. Rabbit monoclonal IgG (Black) was used as the isotype control, cells without incubation with primary antibody and secondary antibody (Blue) were used as the unlabeled control.



Western blot - Anti-ELK1 antibody [E277] (ab32106)

**All lanes :** Anti-ELK1 antibody [E277] (ab32106) at 1/500 dilution

**Lane 1 :** Wild-type HeLa cell lysate

**Lane 2 :** ELK1 knockout HeLa cell lysate

Lysates/proteins at 20 µg per lane.

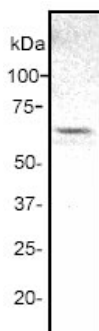
Performed under reducing conditions.

**Predicted band size:** 45 kDa

**Observed band size:** 55 kDa

**Lanes 1- 2:** Merged signal (red and green). Green - ab32106 observed at 55 kDa. Red - Anti-GAPDH antibody [6C5] - Loading Control ([ab8245](#)) observed at 37 kDa.

ab32106 was shown to react with ELK1 in wild-type HeLa cells in western blot. Loss of signal was observed when knockout cell line [ab261764](#) (knockout cell lysate [ab256904](#)) was used. Wild-type HeLa and ELK1 knockout HeLa cell lysates were subjected to SDS-PAGE. Membrane was blocked for 1 hour at room temperature in 0.1% TBST with 3% non-fat dried milk. ab32106 and Anti-GAPDH antibody [6C5] - Loading Control ([ab8245](#)) overnight at 4°C at a 1 in 500 dilution and a 1 in 20000 dilution respectively. Blots were developed with Goat anti-Rabbit IgG H&L (IRDye®800CW) preadsorbed ([ab216773](#)) and Goat anti-Mouse IgG H&L (IRDye®680RD) preadsorbed ([ab216776](#)) secondary antibodies at 1 in 20000 dilution for 1 hour at room temperature before imaging.



Western blot - Anti-ELK1 antibody [E277] (ab32106)

Anti-ELK1 antibody [E277] (ab32106) at 1/500 dilution

**Predicted band size:** 45 kDa

**Observed band size:** 62 kDa

### Why choose a recombinant antibody?



**Research with confidence**  
Consistent and reproducible results



**Long-term and scalable supply**  
Recombinant technology



**Success from the first experiment**  
Confirmed specificity



**Ethical standards compliant**  
Animal-free production

Anti-ELK1 antibody [E277] (ab32106)

**Please note:** All products are "FOR RESEARCH USE ONLY. NOT FOR USE IN DIAGNOSTIC PROCEDURES"

### Our Abpromise to you: Quality guaranteed and expert technical support

---

- Replacement or refund for products not performing as stated on the datasheet
- Valid for 12 months from date of delivery
- Response to your inquiry within 24 hours
- We provide support in Chinese, English, French, German, Japanese and Spanish
- Extensive multi-media technical resources to help you
- We investigate all quality concerns to ensure our products perform to the highest standards

If the product does not perform as described on this datasheet, we will offer a refund or replacement. For full details of the Abpromise, please visit <https://www.abcam.co.jp/abpromise> or contact our technical team.

### Terms and conditions

---

- Guarantee only valid for products bought direct from Abcam or one of our authorized distributors