

Anti-Elafin/ESI antibody ab46774

2 References [画像数 2](#)

製品の概要

製品名	Anti-Elafin/ESI antibody
製品の詳細	Rabbit polyclonal to Elafin/ESI
由来種	Rabbit
アプリケーション	適用あり: WB, ICC/IF
種交差性	交差種: Human
免疫原	Synthetic peptide corresponding to Human Elafin/ESI (internal sequence). (Peptide available as ab46834)
特記事項	<p>The Life Science industry has been in the grips of a reproducibility crisis for a number of years. Abcam is leading the way in addressing this with our range of recombinant monoclonal antibodies and knockout edited cell lines for gold-standard validation. Please check that this product meets your needs before purchasing.</p> <p>If you have any questions, special requirements or concerns, please send us an inquiry and/or contact our Support team ahead of purchase. Recommended alternatives for this product can be found below, along with publications, customer reviews and Q&As</p>

製品の特性

製品の状態	Liquid
保存方法	Shipped at 4°C. Upon delivery aliquot and store at -20°C. Avoid freeze / thaw cycles.
バッファー	pH: 7.40 Preservative: 0.05% Sodium azide Constituents: PBS, 50% Glycerol, 2.9% Sodium chloride
精製度	Immunogen affinity purified
ポリモノ	ポリクローナル
アイソタイプ	IgG

アプリケーション

The Abpromise guarantee Abpromise保証は、 次のテスト済みアプリケーションにおけるab46774の使用に適用されます
アプリケーションノートには、推奨の開始希釈率がありますが、適切な希釈率につきましてはご検討ください。

アプリケーション	Abreviews	特記事項
WB		
ICC/IF		

追加情報

ICC/IF: Use at a concentration of 1-5 µg/ml.

WB: 1/1000 - 1/5000. Predicted molecular weight: 13 kDa. A recommended starting concentration for Western blots is 1/1000 when using colorimetric substrates such as BCIP/NBT, and 1/5000 for chemiluminescent substrates. Dilution optimised using Chromogenic detection. Not yet tested in other applications. Optimal dilutions/concentrations should be determined by the end user.

ターゲット情報

機能

Neutrophil and pancreatic elastase-specific inhibitor of skin. It may prevent elastase-mediated tissue proteolysis.

配列類似性

Contains 1 WAP domain.

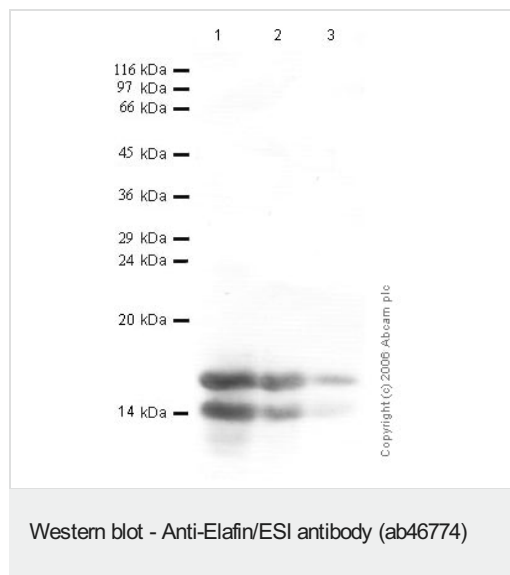
ドメイン

Consists of two domains: the transglutaminase substrate domain (cementoin moiety) and the elastase inhibitor domain. The transglutaminase substrate domain serves as an anchor to localize elafin covalently to specific sites on extracellular matrix proteins.

細胞内局在

Secreted.

画像



All lanes : Anti-Elafin/ESI antibody (ab46774) at 1/1000 dilution

Lane 1 : recombinant Human Elafin at 0.05 µg

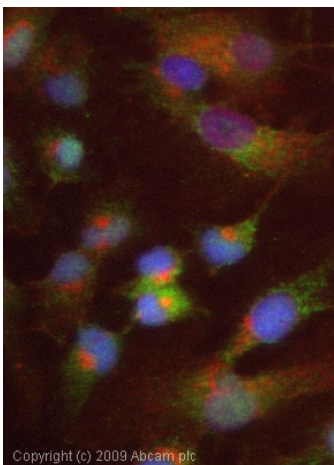
Lane 2 : recombinant Human Elafin at 0.01 µg

Lane 3 : recombinant Human Elafin at 0.001 µg

Predicted band size: 13 kDa

Observed band size: 14 kDa

Additional bands at: 18 kDa (possible dimer)



ICC/IF image of ab46774 stained HepG2 cells. The cells were 100% methanol fixed (5 min) and then incubated in 1%BSA / 10% normal goat serum / 0.3M glycine in 0.1% PBS-Tween for 1h to permeabilise the cells and block non-specific protein-protein interactions. The cells were then incubated with the antibody (ab46774, 1µg/ml) overnight at +4°C. The secondary antibody (green) was Alexa Fluor® 488 goat anti-rabbit IgG (H+L) used at a 1/1000 dilution for 1h. Alexa Fluor® 594 WGA was used to label plasma membranes (red) at a 1/200 dilution for 1h. DAPI was used to stain the cell nuclei (blue) at a concentration of 1.43µM.

Immunocytochemistry/ Immunofluorescence - Anti-Elafin/ESI antibody (ab46774)

Please note: All products are "FOR RESEARCH USE ONLY. NOT FOR USE IN DIAGNOSTIC PROCEDURES"

Our Abpromise to you: Quality guaranteed and expert technical support

- Replacement or refund for products not performing as stated on the datasheet
- Valid for 12 months from date of delivery
- Response to your inquiry within 24 hours
- We provide support in Chinese, English, French, German, Japanese and Spanish
- Extensive multi-media technical resources to help you
- We investigate all quality concerns to ensure our products perform to the highest standards

If the product does not perform as described on this datasheet, we will offer a refund or replacement. For full details of the Abpromise, please visit <https://www.abcam.co.jp/abpromise> or contact our technical team.

Terms and conditions

- Guarantee only valid for products bought direct from Abcam or one of our authorized distributors