


Anti-eIF4G1 antibody ab47625

★★★★★ **2 Abreviews** **画像数 3**

製品の概要

製品名	Anti-eIF4G1 antibody
製品の詳細	Rabbit polyclonal to eIF4G1
由来種	Rabbit
アプリケーション	適用あり: WB, ICC/IF, IHC-P
種交差性	交差種: Human 交差が予測される動物種: Mouse, Sheep, Rabbit, Horse, Cow, Pig 
免疫原	Synthetic peptide conjugated to KLH derived from within residues 600 - 700 of Human eIF4G1. Immunogen の所有権に関して (Peptide available as ab47647 .)
ポジティブ・コントロール	This antibody gave a positive signal in SHSY-5Y Whole Cell Lysate.
特記事項	<p>The Life Science industry has been in the grips of a reproducibility crisis for a number of years. Abcam is leading the way in addressing this with our range of recombinant monoclonal antibodies and knockout edited cell lines for gold-standard validation. Please check that this product meets your needs before purchasing.</p> <p>If you have any questions, special requirements or concerns, please send us an inquiry and/or contact our Support team ahead of purchase. Recommended alternatives for this product can be found below, along with publications, customer reviews and Q&As</p>

製品の特性

製品の状態	Liquid
保存方法	Shipped at 4°C. Store at +4°C short term (1-2 weeks). Upon delivery aliquot. Store at -20°C or -80°C. Avoid freeze / thaw cycle.
バッファー	pH: 7.40 Preservative: 0.02% Sodium azide Constituent: PBS Batches of this product that have a concentration < 1mg/ml may have BSA added as a stabilising agent. If you would like information about the formulation of a specific lot, please contact our scientific support team who will be happy to help.
精製度	Immunogen affinity purified
ポリ/モノ	ポリクローナル

アプリケーション

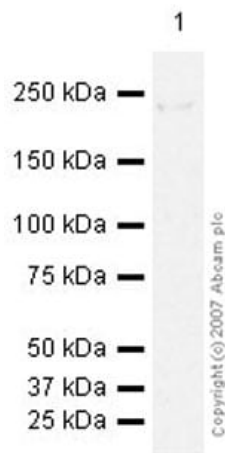
The Abpromise guarantee **Abpromise保証は、次のテスト済みアプリケーションにおけるab47625の使用に適用されず**
アプリケーションノートには、推奨の開始希釈率がありますが、適切な希釈率につきましてはご確認ください。

アプリケーション	Abreviews	特記事項
WB	★★★★☆ (1)	Use a concentration of 1 µg/ml. Detects a band of approximately 220 kDa (predicted molecular weight: 220 kDa).
ICC/IF		Use a concentration of 1 µg/ml.
IHC-P		Use a concentration of 5 µg/ml.

ターゲット情報

機能	Component of the protein complex eIF4F, which is involved in the recognition of the mRNA cap, ATP-dependent unwinding of 5'-terminal secondary structure and recruitment of mRNA to the ribosome.
関連疾患	Defects in EIF4G1 are the cause of Parkinson disease type 18 (PARK18) [MIM:614251]. An autosomal dominant, late-onset form of Parkinson disease. Parkinson disease is a complex neurodegenerative disorder characterized by bradykinesia, resting tremor, muscular rigidity and postural instability, as well as by a clinically significant response to treatment with levodopa. The pathology involves the loss of dopaminergic neurons in the substantia nigra and the presence of Lewy bodies (intraneuronal accumulations of aggregated proteins), in surviving neurons in various areas of the brain.
配列類似性	Belongs to the eIF4G family. Contains 1 MI domain. Contains 1 MIF4G domain. Contains 1 W2 domain.
翻訳後修飾	Phosphorylated at multiple sites in vivo. Phosphorylation at Ser-1185 by PRKCA induces binding to MKNK1. Following infection by certain enteroviruses, rhinoviruses and aphthoviruses, EIF4G1 is cleaved by the viral protease 2A, or the leader protease in the case of aphthoviruses. This shuts down the capped cellular mRNA transcription.

画像



Western blot - Anti-eIF4G1 antibody (ab47625)

Anti-eIF4G1 antibody (ab47625) at 1 $\mu\text{g/ml}$ + SHSY-5Y (Human neuroblastoma cell line) Whole Cell Lysate at 10 μg

Secondary

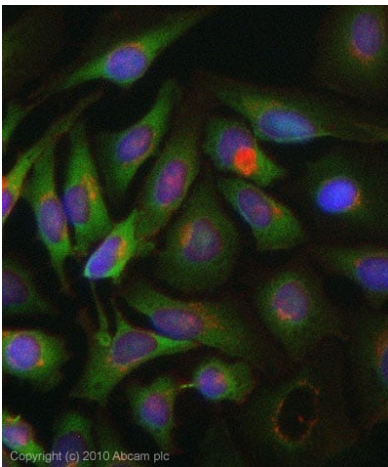
Goat polyclonal to Rabbit IgG - H&L - Pre-Adsorbed (HRP) at 1/3000 dilution

Developed using the ECL technique.

Performed under reducing conditions.

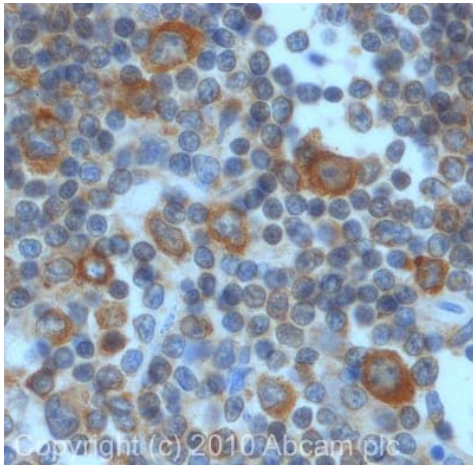
Predicted band size: 220 kDa

Observed band size: 220 kDa



Immunocytochemistry/ Immunofluorescence - Anti-eIF4G1 antibody (ab47625)

ICC/IF image of ab47625 stained HeLa cells. The cells were 4% PFA fixed (10 min) and then incubated in 1%BSA / 10% normal Goat serum / 0.3M glycine in 0.1% PBS-Tween for 1h to permeabilise the cells and block non-specific protein-protein interactions. The cells were then incubated with the antibody (ab47625, 1 $\mu\text{g/ml}$) overnight at +4 $^{\circ}\text{C}$. The secondary antibody (green) was Alexa Fluor[®] 488 Goat anti-Rabbit IgG (H+L) used at a 1/1000 dilution for 1h. Alexa Fluor[®] 594 WGA was used to label plasma membranes (red) at a 1/200 dilution for 1h. DAPI was used to stain the cell nuclei (blue) at a concentration of 1.43 μM . This antibody also gave a positive result in 4% PFA fixed (10 min) MCF-7 cells at 1 $\mu\text{g/ml}$, and in 100% Methanol fixed (5 min) HeLa cells at 1 $\mu\text{g/ml}$, and in MCF-7 cells at 5 $\mu\text{g/ml}$.



Immunohistochemistry (Formalin/PFA-fixed paraffin-embedded sections) - Anti-elf4G1 antibody (ab47625)

IHC image of ab47625 staining in Hodgkin's Lymphoma formalin fixed paraffin embedded tissue section, performed on a Leica Bond™ system using the standard protocol F. The section was pre-treated using heat mediated antigen retrieval with sodium citrate buffer (pH6, epitope retrieval solution 1) for 20 mins. The section was then incubated with ab47625, 5µg/ml, for 15 mins at room temperature and detected using an HRP conjugated compact polymer system. DAB was used as the chromogen. The section was then counterstained with haematoxylin and mounted with DPX.

For other IHC staining systems (automated and non-automated) customers should optimize variable parameters such as antigen retrieval conditions, primary antibody concentration and antibody incubation times.

Please note: All products are "FOR RESEARCH USE ONLY. NOT FOR USE IN DIAGNOSTIC PROCEDURES"

Our Abpromise to you: Quality guaranteed and expert technical support

- Replacement or refund for products not performing as stated on the datasheet
- Valid for 12 months from date of delivery
- Response to your inquiry within 24 hours
- We provide support in Chinese, English, French, German, Japanese and Spanish
- Extensive multi-media technical resources to help you
- We investigate all quality concerns to ensure our products perform to the highest standards

If the product does not perform as described on this datasheet, we will offer a refund or replacement. For full details of the Abpromise, please visit <https://www.abcam.co.jp/abpromise> or contact our technical team.

Terms and conditions

- Guarantee only valid for products bought direct from Abcam or one of our authorized distributors