

Anti-eIF4EBP1 (phospho T46) antibody ab27792

3 References [画像数 2](#)

製品の概要

製品名	Anti-eIF4EBP1 (phospho T46) antibody
製品の詳細	Rabbit polyclonal to eIF4EBP1 (phospho T46)
由来種	Rabbit
アプリケーション	適用あり: WB, ICC/IF
種交差性	交差種: Mouse, Human
免疫原	Synthetic peptide corresponding to Human eIF4EBP1 (phospho T46).
ポジティブ・コントロール	WB: PI3K inhibitor LY2904002 and PDGF treated and untreated NIH3T3 cell lysate. ICC/IF: 70% confluent log phase HeLa cells.
特記事項	<p>The Life Science industry has been in the grips of a reproducibility crisis for a number of years. Abcam is leading the way in addressing this with our range of recombinant monoclonal antibodies and knockout edited cell lines for gold-standard validation. Please check that this product meets your needs before purchasing.</p> <p>If you have any questions, special requirements or concerns, please send us an inquiry and/or contact our Support team ahead of purchase. Recommended alternatives for this product can be found below, along with publications, customer reviews and Q&As</p>

製品の特性

製品の状態	Liquid
保存方法	Shipped at 4°C. Store at +4°C short term (1-2 weeks). Upon delivery aliquot. Store at -20°C long term.
バッファー	<p>pH: 7.30</p> <p>Preservative: 0.05% Sodium azide</p> <p>Constituents: 50% Glycerol (glycerin, glycerine), 0.1% BSA</p>
精製度	Immunogen affinity purified
特記事項 (精製)	Ab27792 was purified from rabbit serum by sequential epitope specific chromatography. The antibody was negatively preadsorbed using a non phosphopeptide corresponding to the site of phosphorylation to remove antibody that is reactive with non phosphorylated eIF4EBP1. The final product is generated by affinity chromatography using a eIF4EBP1 derived peptide that is phosphorylated at threonine 46.
ポリ/モノ	ポリクローナル

アプリケーション

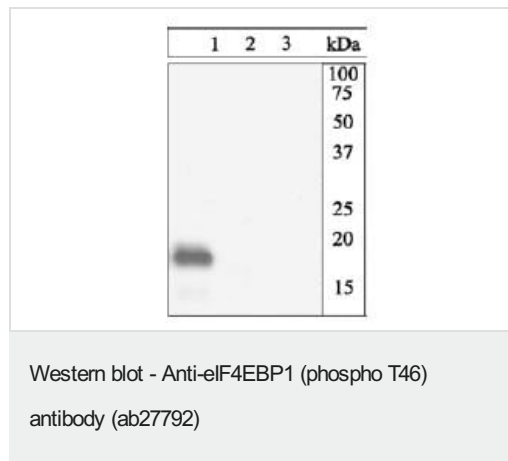
The Abpromise guarantee Abpromise保証は、 次のテスト済みアプリケーションにおけるab27792の使用に適用されます
アプリケーションノートには、推奨の開始希釈率がありますが、適切な希釈率につきましてはご確認ください。

アプリケーション	Abreviews	特記事項
WB		1/1000. Predicted molecular weight: 13 kDa.
ICC/IF		1/250.

ターゲット情報

機能	Regulates eIF4E activity by preventing its assembly into the eIF4F complex. Mediates the regulation of protein translation by hormones, growth factors and other stimuli that signal through the MAP kinase and mTORC1 pathways.
配列類似性	Belongs to the eIF4E-binding protein family.
翻訳後修飾	Phosphorylated on serine and threonine residues in response to insulin, EGF and PDGF. Phosphorylation at Thr-37, Thr-46, Ser-65 and Thr-70 is regulated by mTORC1. Phosphorylated upon DNA damage, probably by ATM or ATR.

画像



All lanes : Anti-eIF4EBP1 (phospho T46) antibody (ab27792) at 1/1000 dilution (diluted in 3% BSA TBST buffer, incubated for two hours at room temperature.)

Lane 1 : PDGF treated NIH3T3 cell lysate

Lane 2 : PI3K inhibitor LY2904002 treated NIH3T3 cell lysate

Lane 3 : PI3K inhibitor LY2904002 and PDGF treated NIH3T3 cell lysate

Secondary

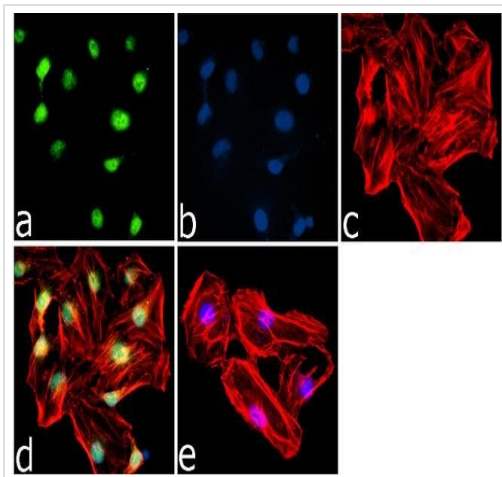
All lanes : goat F(ab)₂ anti rabbit IgG
HRP conjugate

Predicted band size: 13 kDa

Observed band size: 18 kDa

The figure shows that ab27792 can detect phosphorylated

eIF4EBP1 in PDGF treated NIH3T3 cells (lane 1), but does not detect the unphosphorylated form (lanes 2 and 3: controls). Blocking step: 3% BSA TBST buffer for one hour at room temperature.



Immunocytochemistry/ Immunofluorescence - Anti-eIF4EBP1 (phospho T46) antibody (ab27792)

Immunofluorescence analysis of eIF4EBP1 was done on 70% confluent log phase HeLa cells. The cells were fixed with 4% paraformaldehyde for 15 minutes, permeabilized with 0.25% Triton™ X-100 for 10 minutes, and blocked with 5% BSA for 1 hour at room temperature. The cells were labeled with 4EBP1 (pT46) Rabbit Polyclonal Antibody (ab27792) at 1/250 dilution in 1% BSA and incubated for 3 hours at room temperature and then labeled with Goat anti-Rabbit IgG (H+L) Superclonal™ Secondary Antibody, Alexa Fluor® 488 conjugate at a dilution of 1/2000 for 45 minutes at room temperature (Panel a: green). Nuclei (Panel b: blue) were stained with SlowFade® Gold Antifade Mountant with DAPI. F-actin (Panel c: red) was stained with Rhodamine Phalloidin (1/300). Panel d is a merged image showing Nuclear localization. Panel e is a no primary antibody control. The images were captured at 60X magnification.

Please note: All products are "FOR RESEARCH USE ONLY. NOT FOR USE IN DIAGNOSTIC PROCEDURES"

Our Abpromise to you: Quality guaranteed and expert technical support

- Replacement or refund for products not performing as stated on the datasheet
- Valid for 12 months from date of delivery
- Response to your inquiry within 24 hours
- We provide support in Chinese, English, French, German, Japanese and Spanish
- Extensive multi-media technical resources to help you
- We investigate all quality concerns to ensure our products perform to the highest standards

If the product does not perform as described on this datasheet, we will offer a refund or replacement. For full details of the Abpromise, please visit <https://www.abcam.co.jp/abpromise> or contact our technical team.

Terms and conditions

- Guarantee only valid for products bought direct from Abcam or one of our authorized distributors