


Anti-eIF4EBP1 (phospho T36) antibody ab47365

[7 References](#) [画像数 3](#)

製品の概要

製品名	Anti-eIF4EBP1 (phospho T36) antibody
製品の詳細	Rabbit polyclonal to eIF4EBP1 (phospho T36)
由来種	Rabbit
特異性	ab47365 detects endogenous levels of 4E-BP1 only when phosphorylated at threonine 36. This antibody may cross-react with 4E-BP2 and 4E-BP3 when phosphorylated at equivalent sites.
アプリケーション	適用あり: ICC/IF, WB, IHC-P
種交差性	交差種: Human 交差が予測される動物種: Mouse, Rat 
免疫原	Synthetic peptide corresponding to Human eIF4EBP1 aa 1-100 (phospho T36). Database link: Q13541
ポジティブ・コントロール	MDA-MB-435 cell extracts; Human breast carcinoma tissue
特記事項	<p>The Life Science industry has been in the grips of a reproducibility crisis for a number of years. Abcam is leading the way in addressing this with our range of recombinant monoclonal antibodies and knockout edited cell lines for gold-standard validation. Please check that this product meets your needs before purchasing.</p> <p>If you have any questions, special requirements or concerns, please send us an inquiry and/or contact our Support team ahead of purchase. Recommended alternatives for this product can be found below, along with publications, customer reviews and Q&As</p>

製品の特性

製品の状態	Liquid
保存方法	Shipped at 4°C. Store at -20°C. Stable for 12 months at -20°C.
バッファー	pH: 7.40 Preservative: 0.02% Sodium azide Constituents: PBS, 50% Glycerol, 0.87% Sodium chloride Without Mg+2 and Ca+2
精製度	Immunogen affinity purified
特記事項 (精製)	The antibody was affinity-purified from rabbit antiserum by affinity chromatography using epitope-specific phosphopeptide. The antibody against non-phosphopeptide was removed by

chromatography using non-phosphopeptide corresponding to the phosphorylation site.

ポリ/モノ

ポリクローナル

アイソタイプ

IgG

アプリケーション

The Abpromise guarantee **Abpromise保証は、次のテスト済みアプリケーションにおけるab47365の使用に適用されます**
アプリケーションノートには、推奨の開始希釈率がありますが、適切な希釈率につきましてはご検討ください。

アプリケーション	Abreviews	特記事項
ICC/IF		Use a concentration of 1 - 5 µg/ml.
WB		1/500 - 1/1000. Detects a band of approximately 20 kDa (predicted molecular weight: 13 kDa).
IHC-P		Use at an assay dependent concentration.

ターゲット情報

機能

Regulates eIF4E activity by preventing its assembly into the eIF4F complex. Mediates the regulation of protein translation by hormones, growth factors and other stimuli that signal through the MAP kinase and mTORC1 pathways.

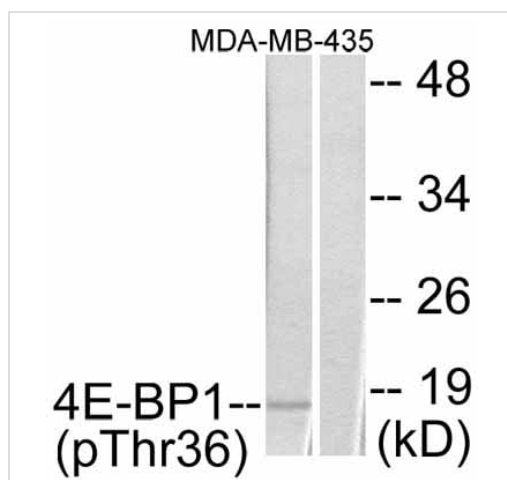
配列類似性

Belongs to the eIF4E-binding protein family.

翻訳後修飾

Phosphorylated on serine and threonine residues in response to insulin, EGF and PDGF. Phosphorylation at Thr-37, Thr-46, Ser-65 and Thr-70 is regulated by mTORC1. Phosphorylated upon DNA damage, probably by ATM or ATR.

画像



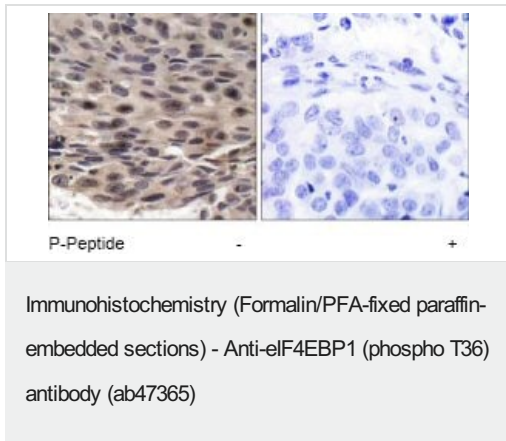
All lanes : Anti-eIF4EBP1 (phospho T36) antibody (ab47365)

Lane 1 : MDA-MB-435 cells,
treated with EGF (200 ng/ml, 30min)

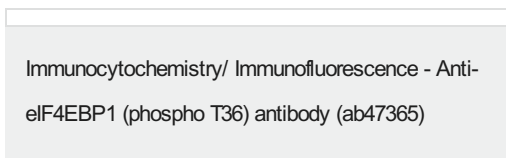
Lane 2 : MDA-MB-435 cells, untreated

Predicted band size: 13 kDa

Western blot - Anti-eIF4EBP1 (phospho T36)
antibody (ab47365)



Immunohistochemical analysis of paraffin-embedded human breast carcinoma tissue using ab47365. Left image without immunising peptide treatment; right image with immunising peptide treatment.



ICC/IF image of ab47365 stained Hek293 cells. The cells were 100% methanol fixed (5 min) and then incubated in 1%BSA / 10% normal goat serum / 0.3M glycine in 0.1% PBS-Tween for 1h to permeabilise the cells and block non-specific protein-protein interactions. The cells were then incubated with the antibody (ab47365, 1µg/ml) overnight at +4°C. The secondary antibody (green) was Alexa Fluor® 488 goat anti-rabbit IgG (H+L) used at a 1/1000 dilution for 1h. Alexa Fluor® 594 WGA was used to label plasma membranes (red) at a 1/200 dilution for 1h. DAPI was used to stain the cell nuclei (blue) at a concentration of 1.43µM.

Please note: All products are "FOR RESEARCH USE ONLY. NOT FOR USE IN DIAGNOSTIC PROCEDURES"

Our Abpromise to you: Quality guaranteed and expert technical support

- Replacement or refund for products not performing as stated on the datasheet
- Valid for 12 months from date of delivery
- Response to your inquiry within 24 hours
- We provide support in Chinese, English, French, German, Japanese and Spanish
- Extensive multi-media technical resources to help you
- We investigate all quality concerns to ensure our products perform to the highest standards

If the product does not perform as described on this datasheet, we will offer a refund or replacement. For full details of the Abpromise, please visit <https://www.abcam.co.jp/abpromise> or contact our technical team.

Terms and conditions

- Guarantee only valid for products bought direct from Abcam or one of our authorized distributors