

Anti-eIF4EBP1 antibody [Y330] ab32130

KO 評価済 リコンビナント RabMAb

9 References 画像数 6

製品の概要

製品名	Anti-eIF4EBP1 antibody [Y330]
製品の詳細	Rabbit monoclonal [Y330] to eIF4EBP1
由来種	Rabbit
特異性	ab32130 recognises 4E-BP1 (eIF4E-binding protein) also known as PHAS.
アプリケーション	適用あり: WB, IHC-P, Flow Cyt (Intra) 適用なし: ICC/IF
種交差性	交差種: Human
免疫原	Synthetic peptide. This information is proprietary to Abcam and/or its suppliers.
ポジティブ・コントロール	WB: HeLa, HEK-293 cell lysate, HAP1 and K562 cell lysate, IHC-P: Human prostate carcinoma, Flow Cyt (intra): HeLa cells
特記事項	<p>This product is a recombinant monoclonal antibody, which offers several advantages including:</p> <ul style="list-style-type: none"> - High batch-to-batch consistency and reproducibility - Improved sensitivity and specificity - Long-term security of supply - Animal-free production <p>For more information see here.</p> <p>Our RabMAb[®] technology is a patented hybridoma-based technology for making rabbit monoclonal antibodies. For details on our patents, please refer to RabMAb[®] patents.</p> <p>Mouse, Rat: We have preliminary internal testing data to indicate this antibody may not react with these species. Please contact us for more information.</p>

製品の特性

製品の状態	Liquid
保存方法	Shipped at 4°C. Upon delivery aliquot and store at -20°C. Avoid freeze / thaw cycles.
バッファー	pH: 7.20 Preservative: 0.01% Sodium azide Constituents: 49% PBS, 50% Glycerol (glycerin, glycerine), 0.05% BSA
精製度	Protein A purified

ポリ/モノ	モノクローナル
クローン名	Y330
アイソタイプ	IgG

アプリケーション

The Abpromise guarantee **Abpromise保証は、次のテスト済みアプリケーションにおけるab32130の使用に適用されます**
アプリケーションノートには、推奨の開始希釈率がありますが、適切な希釈率につきましてはご検討ください。

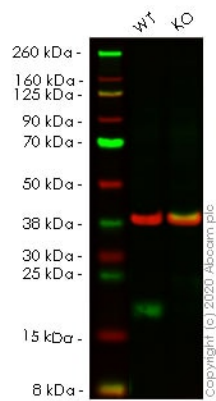
アプリケーション	Abreviews	特記事項
WB		1/1000. Detects a band of approximately 15-20 kDa (predicted molecular weight: 12 kDa).
IHC-P		Use at an assay dependent concentration. Perform heat mediated antigen retrieval with citrate buffer pH 6 before commencing with IHC staining protocol.
Flow Cyt (Intra)		1/1000.

追加情報 Is unsuitable for ICC/IF.

ターゲット情報

機能	Regulates eIF4E activity by preventing its assembly into the eIF4F complex. Mediates the regulation of protein translation by hormones, growth factors and other stimuli that signal through the MAP kinase and mTORC1 pathways.
配列類似性	Belongs to the eIF4E-binding protein family.
翻訳後修飾	Phosphorylated on serine and threonine residues in response to insulin, EGF and PDGF. Phosphorylation at Thr-37, Thr-46, Ser-65 and Thr-70 is regulated by mTORC1. Phosphorylated upon DNA damage, probably by ATM or ATR.

画像



Western blot - Anti-eIF4EBP1 antibody [Y330]
(ab32130)

All lanes : Anti-eIF4EBP1 antibody [Y330] (ab32130) at 1/1000 dilution

Lane 1 : Wild-type HeLa cell lysate

Lane 2 : EIF4EBP1 knockout HeLa cell lysate

Lysates/proteins at 20 µg per lane.

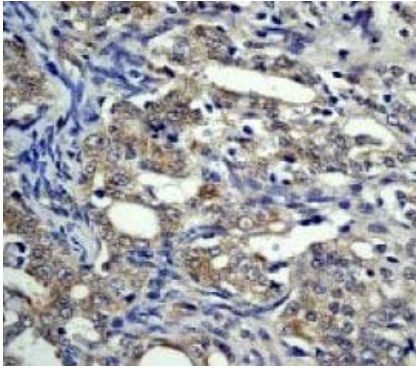
Performed under reducing conditions.

Predicted band size: 12 kDa

Observed band size: 13 kDa

Lanes 1-2: Merged signal (red and green). Green - ab32130 observed at 13 kDa. Red - loading control **ab8245** observed at 37 kDa.

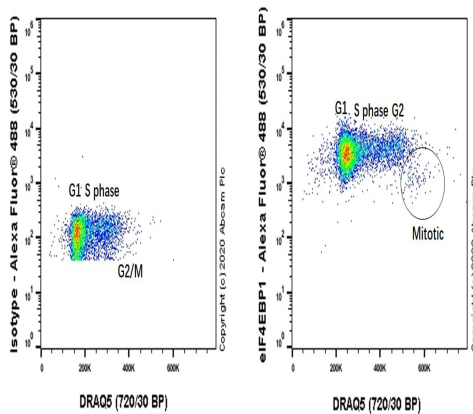
ab32130 Anti-eIF4EBP1 antibody [Y330] was shown to specifically react with eIF4EBP1 in wild-type HeLa cells. Loss of signal was observed when knockout cell line **ab264784** (knockout cell lysate **ab257146**) was used. Wild-type and eIF4EBP1 knockout samples were subjected to SDS-PAGE. ab32130 and Anti-GAPDH antibody [6C5] - Loading Control (**ab8245**) were incubated overnight at 4°C at 1 in 1000 Dilution and 1 in 20000 dilution respectively. Blots were developed with Goat anti-Rabbit IgG H&L (IRDye® 800CW) preadsorbed (**ab216773**) and Goat anti-Mouse IgG H&L (IRDye® 680RD) preadsorbed (**ab216776**) secondary antibodies at 1 in 20000 dilution for 1 hour at room temperature before imaging.



Immunohistochemistry (Formalin/PFA-fixed paraffin-embedded sections) - Anti-eIF4EBP1 antibody [Y330] (ab32130)

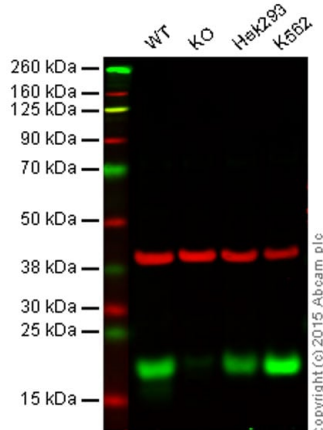
ab32130, staining human prostate carcinoma by immunohistochemistry, Paraffin embedded tissue

Perform heat mediated antigen retrieval with citrate buffer pH 6 before commencing with IHC staining protocol.



Flow Cytometry (Intracellular) - Anti-eIF4EBP1 antibody [Y330] (ab32130)

Flow Cytometry analysis of HeLa (Human cervix adenocarcinoma epithelial cell) cells labeling eIF4EBP1 with purified ab32130 at 1/1000 dilution (1 µg/mL) (Red). Cells were fixed with 4% Paraformaldehyde and permeabilised with 90% Methanol. A Goat anti rabbit IgG (Alexa Fluor® 488, [ab150077](#)) secondary antibody was used at 1/2000. Isotype control - Rabbit monoclonal IgG (Left). Low expression in mitotic phase was consistent with literature. (PMID: 11553333)



Western blot - Anti-eIF4EBP1 antibody [Y330] (ab32130)

All lanes : Anti-eIF4EBP1 antibody [Y330] (ab32130) at 1/1000 dilution

Lane 1 : Wild-type HAP1 cell lysate

Lane 2 : eIF4EBP1 knockout HAP1 cell lysate

Lane 3 : Hek293 cell lysate

Lane 4 : K562 cell lysate

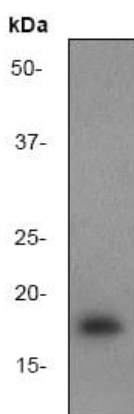
Lysates/proteins at 20 µg per lane.

Predicted band size: 12 kDa

Lanes 1 -4: Merged signal (red and green). Green - ab32130 observed at 20 kDa. Red - loading control, [ab8245](#), observed at 37

kDa.

ab32130 was shown to specifically react with eIF4EBP1 when eIF4EBP1 knockout samples were used. Wild-type and eIF4EBP1 knockout samples were subjected to SDS-PAGE. ab32130 and **ab8245** (loading control to GAPDH) were diluted 1/1000 and 1/2000 respectively and incubated overnight at 4°C. Blots were developed with Goat anti-Rabbit IgG H&L (IRDye® 800CW) preadsorbed (**ab216773**) and Goat anti-Mouse IgG H&L (IRDye® 680RD) preadsorbed (**ab216776**) secondary antibodies at 1/10000 dilution for 1 h at room temperature before imaging.



Anti-eIF4EBP1 antibody [Y330] (ab32130) at 1/1000 dilution + K562 cell lysate

Predicted band size: 12 kDa

Observed band size: 18 kDa

Western blot - Anti-eIF4EBP1 antibody [Y330] (ab32130)

Why choose a recombinant antibody?



Research with confidence
Consistent and reproducible results



Long-term and scalable supply
Recombinant technology



Success from the first experiment
Confirmed specificity



Ethical standards compliant
Animal-free production

Anti-eIF4EBP1 antibody [Y330] (ab32130)

Please note: All products are "FOR RESEARCH USE ONLY. NOT FOR USE IN DIAGNOSTIC PROCEDURES"

Our Abpromise to you: Quality guaranteed and expert technical support

-
- Replacement or refund for products not performing as stated on the datasheet
 - Valid for 12 months from date of delivery
 - Response to your inquiry within 24 hours

 - We provide support in Chinese, English, French, German, Japanese and Spanish
 - Extensive multi-media technical resources to help you
 - We investigate all quality concerns to ensure our products perform to the highest standards

If the product does not perform as described on this datasheet, we will offer a refund or replacement. For full details of the Abpromise, please visit <https://www.abcam.co.jp/abpromise> or contact our technical team.

Terms and conditions

- Guarantee only valid for products bought direct from Abcam or one of our authorized distributors