

Anti-eIF4E antibody [Y449] ab33768

リコンビナント **RabMAb**

★★★★★ **8 Abreviews** **2 References** 画像数 8

製品の概要

| | |
|--------------|---|
| 製品名 | Anti-eIF4E antibody [Y449] |
| 製品の詳細 | Rabbit monoclonal [Y449] to eIF4E |
| 由来種 | Rabbit |
| アプリケーション | 適用あり: Flow Cyt (Intra), ICC/IF, WB, IHC-P, IP |
| 種交差性 | 交差種: Mouse, Rat, Human |
| 免疫原 | Synthetic peptide within Human eIF4E aa 150-250. The exact sequence is proprietary. |
| ポジティブ・コントロール | WB: HEK-293, HepG2, NIH/3T3, RAW 264.7, and C6 cell lysates; IHC-P: Human ovarian cancer tissue. Mouse and rat testis tissues; ICC/IF: RAW 264.7 cells; Flow Cyt (intra): HEK293 cells; IP: NIH/3T3 cell lysate. |
| 特記事項 | <p>This product is a recombinant monoclonal antibody, which offers several advantages including:</p> <ul style="list-style-type: none"> - High batch-to-batch consistency and reproducibility - Improved sensitivity and specificity - Long-term security of supply - Animal-free production <p>For more information see here.</p> <p>Our RabMAb[®] technology is a patented hybridoma-based technology for making rabbit monoclonal antibodies. For details on our patents, please refer to RabMAb[®] patents.</p> |

製品の特性

| | |
|-------|---|
| 製品の状態 | Liquid |
| 保存方法 | Shipped at 4°C. Store at +4°C short term (1-2 weeks). Upon delivery aliquot. Store at -20°C long term. Avoid freeze / thaw cycle. |
| バッファー | <p>pH: 7.20</p> <p>Preservative: 0.01% Sodium azide</p> <p>Constituents: 59% PBS, 40% Glycerol (glycerin, glycerine), 0.05% BSA</p> |
| 精製度 | Protein A purified |
| ポリ/モノ | モノクローナル |
| クローン名 | Y449 |

アプリケーション

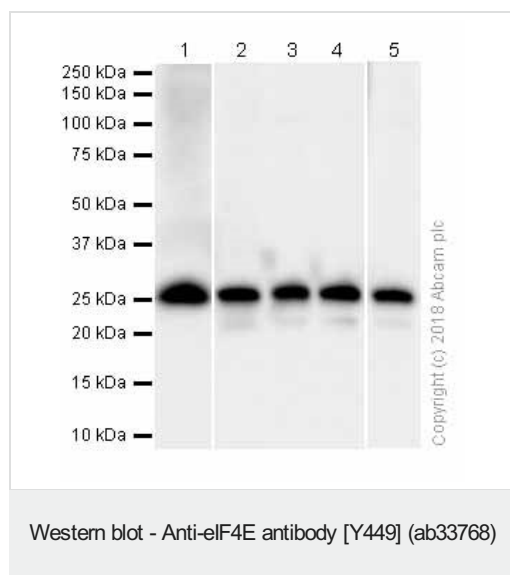
The Abpromise guarantee Abpromise保証は、 次のテスト済みアプリケーションにおけるab33768の使用に適用されます
アプリケーションノートには、推奨の開始希釈率がありますが、適切な希釈率につきましてはご検討ください。

| アプリケーション | Abreviews | 特記事項 |
|------------------|-----------|--|
| Flow Cyt (Intra) | | 1/50. ab172730 - Rabbit monoclonal IgG, is suitable for use as an isotype control with this antibody. |
| ICC/IF | | Use at an assay dependent concentration. |
| WB | ★★★★★ (7) | 1/1000. Detects a band of approximately 30 kDa (predicted molecular weight: 25 kDa). For unpurified use at 1/5000 - 1/20000. |
| IHC-P | | 1/500. Perform heat mediated antigen retrieval with Tris/EDTA buffer pH 9.0 before commencing with IHC staining protocol. See <u>IHC antigen retrieval protocols</u> . |
| IP | | 1/30. |

ターゲット情報

| | |
|-------|---|
| 機能 | Its translation stimulation activity is repressed by binding to the complex CYFIP1-FMR1 (By similarity). Recognizes and binds the 7-methylguanosine-containing mRNA cap during an early step in the initiation of protein synthesis and facilitates ribosome binding by inducing the unwinding of the mRNAs secondary structures. Component of the CYFIP1-EIF4E-FMR1 complex which binds to the mRNA cap and mediates translational repression. In the CYFIP1-EIF4E-FMR1 complex this subunit mediates the binding to the mRNA cap. |
| 配列類似性 | Belongs to the eukaryotic initiation factor 4E family. |
| 翻訳後修飾 | Phosphorylation increases the ability of the protein to bind to mRNA caps and to form the eIF4F complex. |

画像



All lanes : Anti-eIF4E antibody [Y449] (ab33768) at 1/1000 dilution

Lane 1 : HEK-293 (Human embryonic kidney epithelial cell) whole cell lysate

Lane 2 : HepG2 (Human hepatocellular carcinoma epithelial cell) whole cell lysate

Lane 3 : NIH/3T3 (Mouse embryonic fibroblast) whole cell lysate

Lane 4 : RAW 264.7 (Mouse Abelson murine leukemia virus-induced tumor macrophage) whole cell lysate

Lane 5 : C6 (Rat glial tumor glial cell) whole cell lysate

Lysates/proteins at 20 µg per lane.

Secondary

All lanes : Goat Anti-Rabbit IgG H&L (HRP) ([ab97051](#)) at 1/20000 dilution

Predicted band size: 25 kDa

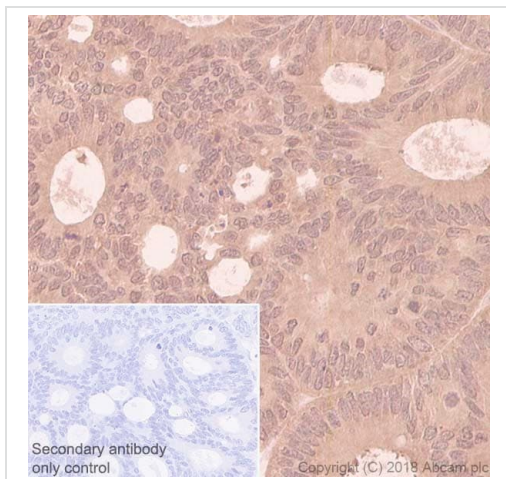
Observed band size: 28 kDa

Blocking and dilution buffer: 5% NFDM/TBST.

Exposure time:

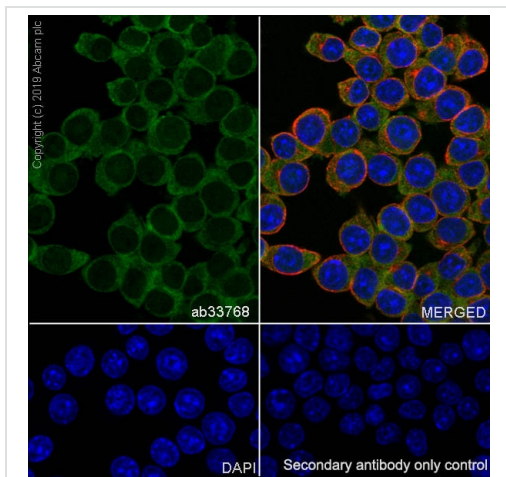
Lane 1: 20 seconds.

Lanes 2-5: 8 seconds.



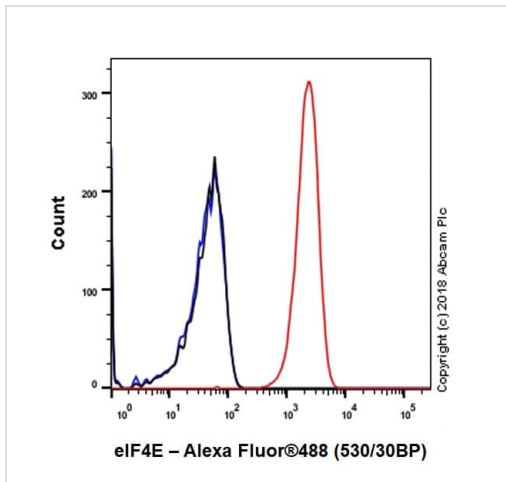
Immunohistochemistry (Formalin/PFA-fixed paraffin-embedded sections) - Anti-eIF4E antibody [Y449] (ab33768)

Immunohistochemistry (Formalin/PFA-fixed paraffin-embedded sections) analysis of human ovarian cancer tissue labelling eIF4E with ab33768 at a dilution of 1/500. Antigen retrieval was performed **ab93684**, Tris/EDTA buffer, pH 9. A ready to use goat anti-rabbit IgG H&L (HRP Polymer) was used as the secondary antibody. Counter stained with Hematoxylin.



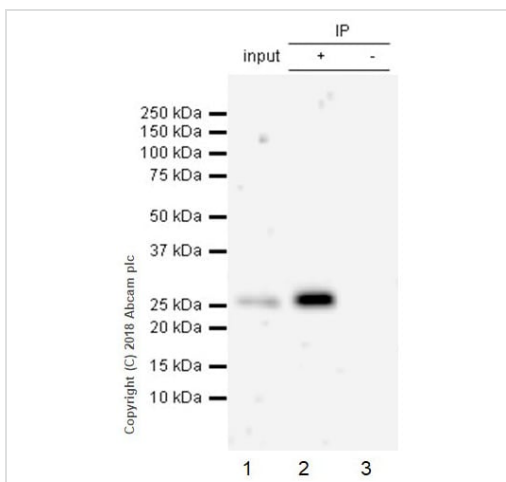
Immunocytochemistry/ Immunofluorescence - Anti-eIF4E antibody [Y449] (ab33768)

Immunocytochemistry/ Immunofluorescence analysis of RAW 264.7 (Mouse Abelson murine leukemia virus-induced tumor macrophage) cells labeling eIF4E with Purified ab33768 at 1/50 (10 µg/mL). Cells were fixed in 4% Paraformaldehyde and permeabilized with 0.1% tritonX-100. Cells were counterstained with **ab195889** Anti-alpha Tubulin antibody [DM1A] - Microtubule Marker (Alexa Fluor® 594) 1/200 (2.5 µg/mL). Goat anti rabbit IgG (Alexa Fluor® 488, **ab150077**) was used as the secondary antibody at 1/1000 (2 µg/mL) dilution. DAPI (blue) was used as nuclear counterstain. PBS instead of the primary antibody was used as the secondary antibody only control.



Flow Cytometry (Intracellular) - Anti-eIF4E antibody [Y449] (ab33768)

Intracellular Flow Cytometry analysis of HEK-293 (Human embryonic kidney epithelial cell) cells labeling eIF4E with Purified ab33768 at 1/50 dilution (10 µg/mL) (Red). Cells were fixed with 4% Paraformaldehyde and permeabilised with 90% Methanol. A Goat anti rabbit IgG (Alexa Fluor® 488, [ab150077](#)) secondary antibody was used at 1/2000. Isotype control - Rabbit monoclonal IgG (Black). Unlabeled control - Cell without incubation with primary antibody and secondary antibody (Blue).



Immunoprecipitation - Anti-eIF4E antibody [Y449] (ab33768)

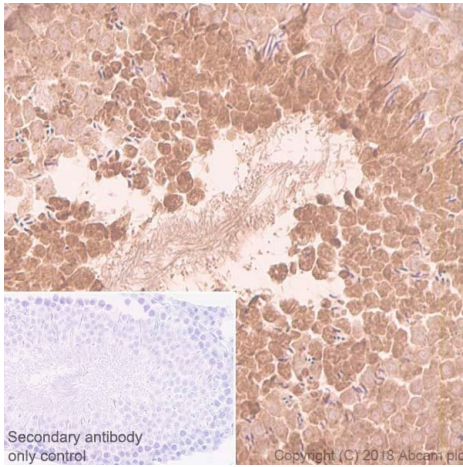
eIF4E was immunoprecipitated from 10 µg NIH/3T3 (Mouse embryonic fibroblast) whole cell lysate with ab33768 at a 1/30 dilution. Western blot was performed from the immunoprecipitate using ab33768 at 1/1000 dilution. VeriBlot for IP Detection Reagent (HRP) ([ab131366](#)), was used for detection at 1/1000 dilution.

Lane 1: NIH/3T3 (Mouse embryonic fibroblast) whole cell lysate 10 µg (Input).

Lane 2: ab33768 IP in NIH/3T3 whole cell lysate.

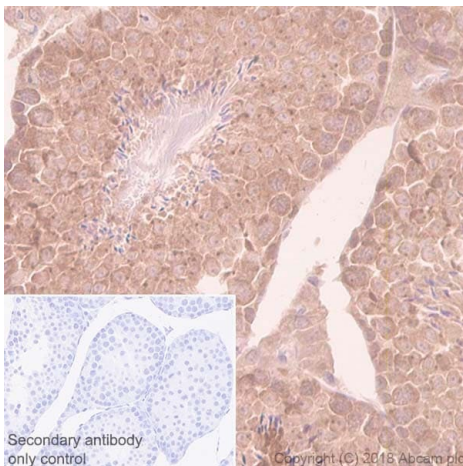
Lane 3: Rabbit monoclonal IgG ([ab172730](#)) instead of ab33768 in NIH/3T3 whole cell lysate.

Blocking/Dilution buffer: 5% NFDM/TBST.



Immunohistochemistry (Formalin/PFA-fixed paraffin-embedded sections) - Anti-eIF4E antibody [Y449] (ab33768)

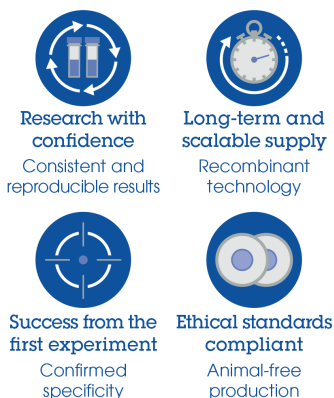
Immunohistochemistry (Formalin/PFA-fixed paraffin-embedded sections) analysis of rat testis tissue labelling eIF4E with ab33768 at a dilution of 1/500. Antigen retrieval was performed **ab93684**, Tris/EDTA buffer, pH 9. A ready to use goat anti-rabbit IgG H&L (HRP Polymer) was used as the secondary antibody. Counter stained with Hematoxylin.



Immunohistochemistry (Formalin/PFA-fixed paraffin-embedded sections) - Anti-eIF4E antibody [Y449] (ab33768)

Immunohistochemistry (Formalin/PFA-fixed paraffin-embedded sections) analysis of mouse testis tissue labelling eIF4E with ab33768 at a dilution of 1/500. Antigen retrieval was performed **ab93684**, Tris/EDTA buffer, pH 9. A ready to use goat anti-rabbit IgG H&L (HRP Polymer) was used as the secondary antibody. Counter stained with Hematoxylin.

Why choose a recombinant antibody?



Anti-eIF4E antibody [Y449] (ab33768)

Please note: All products are "FOR RESEARCH USE ONLY. NOT FOR USE IN DIAGNOSTIC PROCEDURES"

Our Abpromise to you: Quality guaranteed and expert technical support

- Replacement or refund for products not performing as stated on the datasheet
- Valid for 12 months from date of delivery
- Response to your inquiry within 24 hours
- We provide support in Chinese, English, French, German, Japanese and Spanish
- Extensive multi-media technical resources to help you
- We investigate all quality concerns to ensure our products perform to the highest standards

If the product does not perform as described on this datasheet, we will offer a refund or replacement. For full details of the Abpromise, please visit <https://www.abcam.co.jp/abpromise> or contact our technical team.

Terms and conditions

- Guarantee only valid for products bought direct from Abcam or one of our authorized distributors