


### Anti-eIF4A1 antibody ab31217

★★★★★ [6 Abreviews](#) [53 References](#) [画像数 4](#)

#### 製品の概要

製品名	Anti-eIF4A1 antibody
製品の詳細	Rabbit polyclonal to eIF4A1
由来種	Rabbit
特異性	Replenishment batches of our polyclonal antibody, ab31217 are tested in WB. Previous batches were additionally validated in ICC/IF, IHC-P and IP. These applications are still expected to work and are covered by our Abpromise guarantee. You may also be interested in our alternative recombinant antibody, <a href="#">ab185946</a> .
アプリケーション	<b>適用あり:</b> WB, IP, ICC/IF, IHC-P
種交差性	<b>交差種:</b> Mouse, Rat, Cow, Human, African green monkey <b>交差が予測される動物種:</b> Monkey 
免疫原	Synthetic peptide. This information is proprietary to Abcam and/or its suppliers.
ポジティブ・コントロール	This antibody gave a positive signal in the following whole cell lysates: HeLa (Human epithelial carcinoma cell line) Jurkat (Human T cell lymphoblast-like cell line) A431 (Human epithelial carcinoma cell line) NIH 3T3 (Mouse embryonic fibroblast cell line) MEF1 (Mouse embryonic fibroblast cell line) PC12 (Rat adrenal pheochromocytoma cell line) This antibody gave a positive signal in the following tissue lysates: Liver (Mouse) Pancreas (Mouse) Testis (Mouse)
特記事項	<p>The Life Science industry has been in the grips of a reproducibility crisis for a number of years. Abcam is leading the way in addressing this with our range of recombinant monoclonal antibodies and knockout edited cell lines for gold-standard validation. Please check that this product meets your needs before purchasing.</p> <p>If you have any questions, special requirements or concerns, please send us an inquiry and/or contact our Support team ahead of purchase. Recommended alternatives for this product can be found below, along with publications, customer reviews and Q&amp;As</p>

#### 製品の特性

製品の状態	Liquid
保存方法	Shipped at 4°C. Store at +4°C short term (1-2 weeks). Upon delivery aliquot. Store at -20°C or -80°C. Avoid freeze / thaw cycle.
バッファー	pH: 7.40 Preservative: 0.02% Sodium azide

Constituent: PBS

Batches of this product that have a concentration < 1mg/ml may have BSA added as a stabilising agent. If you would like information about the formulation of a specific lot, please contact our scientific support team who will be happy to help.

**精製度**

Immunogen affinity purified

**ポリモノ**

ポリクローナル

**アイソタイプ**

IgG

**アプリケーション**

**The Abpromise guarantee**

Abpromise保証は、次のテスト済みアプリケーションにおけるab31217の使用に適用されます

アプリケーションノートには、推奨の開始希釈率がありますが、適切な希釈率につきましてはご検討ください。

アプリケーション	Abreviews	特記事項
WB	★★★★★ (4)	Use a concentration of 1 µg/ml. Detects a band of approximately 47 kDa (predicted molecular weight: 47 kDa).
IP	★★★★★ (1)	Use at an assay dependent concentration.
ICC/IF	★★★★★ (1)	Use a concentration of 1 µg/ml.
IHC-P		Use at an assay dependent concentration.

**ターゲット情報**

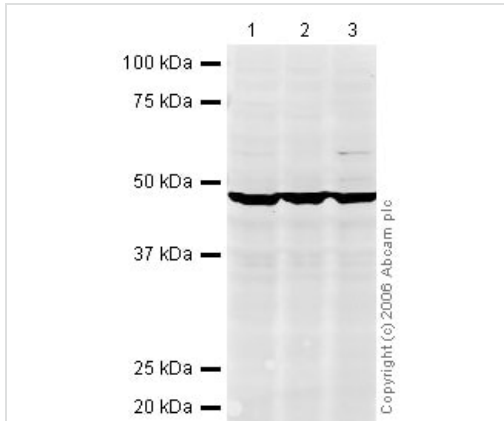
**機能**

ATP-dependent RNA helicase which is a subunit of the eIF4F complex involved in cap recognition and is required for mRNA binding to ribosome. In the current model of translation initiation, eIF4A unwinds RNA secondary structures in the 5'-UTR of mRNAs which is necessary to allow efficient binding of the small ribosomal subunit, and subsequent scanning for the initiator codon.

**配列類似性**

Belongs to the DEAD box helicase family. eIF4A subfamily.  
Contains 1 helicase ATP-binding domain.  
Contains 1 helicase C-terminal domain.

**画像**



Western blot - Anti-eIF4A1 antibody (ab31217)

**All lanes :** Anti-eIF4A1 antibody (ab31217) at 1 µg/ml

**Lane 1 :** HeLa (Human epithelial carcinoma cell line) Whole Cell Lysate

**Lane 2 :** Jurkat whole cell lysate ([ab7899](#))

**Lane 3 :** A-431 whole cell lysate ([ab7909](#))

Lysates/proteins at 20 µg per lane.

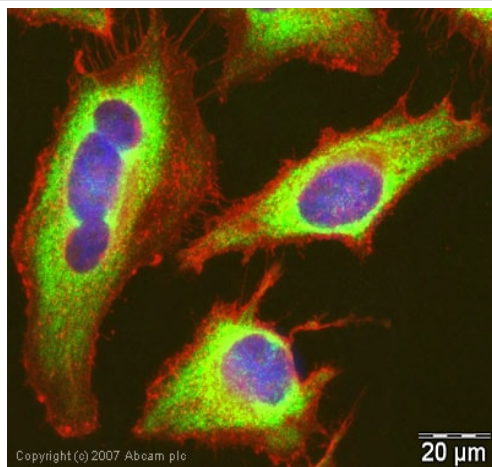
### Secondary

**All lanes :** Goat polyclonal to Rabbit IgG (Alexa Fluor® 680) at 1/10000 dilution

Performed under reducing conditions.

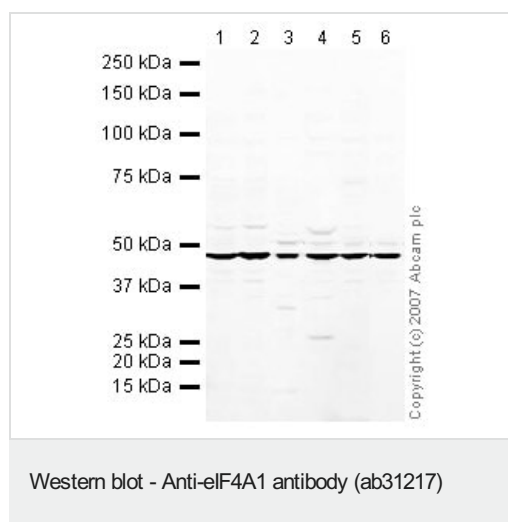
**Predicted band size:** 47 kDa

**Observed band size:** 47 kDa



Immunocytochemistry/ Immunofluorescence - Anti-eIF4A1 antibody (ab31217)

ICC/IF image of ab31217 stained human HeLa cells. The cells were methanol fixed (5 min) and incubated with the antibody (ab31217, 1µg/ml) for 1h at room temperature. The secondary antibody (green) was Alexa Fluor® 488 goat anti-rabbit IgG (H+L) used at a 1/1000 dilution for 1h. Image-iT™ FX Signal Enhancer was used to quench autofluorescence. 5% BSA (in TBS-T) was used for all other blocking steps. DAPI was used to stain the cell nuclei (blue). Alexa Fluor® 594 WGA was used to label plasma membranes (red).



**All lanes :** Anti-eIF4A1 antibody (ab31217) at 1 µg/ml

**Lane 1 :** NIH/3T3 whole cell lysate ([ab7179](#))

**Lane 2 :** MEF1 (Mouse embryonic fibroblast cell line) Whole Cell Lysate

**Lane 3 :** Liver (Mouse) Tissue Lysate - normal tissue

**Lane 4 :** Mouse pancreas tissue lysate - total protein ([ab29363](#))

**Lane 5 :** Testis (Mouse) Tissue Lysate - normal tissue

**Lane 6 :** PC12 (Rat adrenal pheochromocytoma cell line) Whole Cell Lysate

Lysates/proteins at 10 µg per lane.

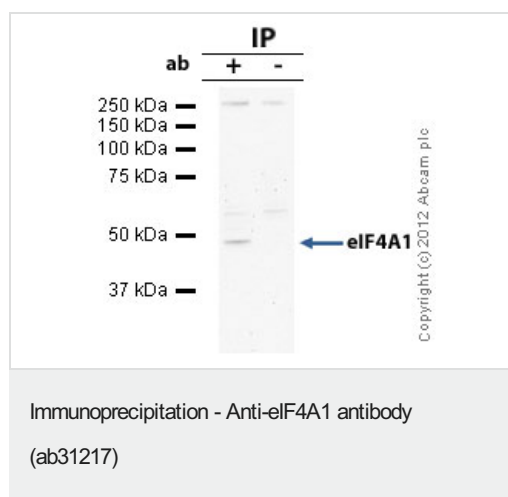
### Secondary

**All lanes :** IRDye 680 Conjugated Goat Anti-Rabbit IgG (H+L) at 1/10000 dilution

Performed under reducing conditions.

**Predicted band size:** 47 kDa

**Observed band size:** 47 kDa



eIF4A1 was immunoprecipitated using 0.5mg HeLa whole cell extract, 5µg of Rabbit polyclonal to eIF4A1 and 50µl of protein G magnetic beads (+). No antibody was added to the control (-). The antibody was incubated under agitation with Protein G beads for 10min, HeLa whole cell extract lysate diluted in RIPA buffer was added to each sample and incubated for a further 10min under agitation.

Proteins were eluted by addition of 40µl SDS loading buffer and incubated for 10min at 70°C; 10µl of each sample was separated on a SDS PAGE gel, transferred to a nitrocellulose membrane, blocked with 5% BSA and probed with ab31217.

Secondary: Mouse monoclonal [SB62a] Secondary Antibody to Rabbit IgG light chain (HRP) ([ab99697](#)).

Band: 47kDa: eIF4A1

**Please note:** All products are "FOR RESEARCH USE ONLY. NOT FOR USE IN DIAGNOSTIC PROCEDURES"

**Our Abpromise to you: Quality guaranteed and expert technical support**

- Replacement or refund for products not performing as stated on the datasheet
- Valid for 12 months from date of delivery
- Response to your inquiry within 24 hours
- We provide support in Chinese, English, French, German, Japanese and Spanish
- Extensive multi-media technical resources to help you
- We investigate all quality concerns to ensure our products perform to the highest standards

If the product does not perform as described on this datasheet, we will offer a refund or replacement. For full details of the Abpromise, please visit <https://www.abcam.co.jp/abpromise> or contact our technical team.

#### **Terms and conditions**

---

- Guarantee only valid for products bought direct from Abcam or one of our authorized distributors