


Anti-eIF3e antibody ab36766

★★★★★ [1 Abreviews](#) [9 References](#) [画像数 5](#)

製品の概要

製品名	Anti-eIF3e antibody
製品の詳細	Rabbit polyclonal to eIF3e
由来種	Rabbit
アプリケーション	適用あり: IHC-P, WB, ICC/IF, IP
種交差性	交差種: Human 交差が予測される動物種: Mouse, Rat, Chicken, Cow, Xenopus laevis, Zebrafish 
免疫原	Synthetic peptide conjugated to KLH derived from within residues 50 - 150 of Human eIF3e.Immunogen の所有権に関して(Peptide available as ab36902 .)
ポジティブ・コントロール	Recombinant Human eIF3e protein (ab114769) can be used as a positive control in WB. This antibody gave a positive signal in the following whole cell lysates: HeLa (Human epithelial carcinoma cell line) Jurkat (Human T cell lymphoblast-like cell line) A431 (Human epithelial carcinoma cell line) HEK 293 (Human embryonic kidney cell line) HepG2 (Human hepatocellular liver carcinoma cell line) MCF-7 (Human breast adenocarcinoma cell line) SHSY-5Y (Human neuroblastoma cell line) ICC/IF: MCF7 cells.
特記事項	<p>The Life Science industry has been in the grips of a reproducibility crisis for a number of years. Abcam is leading the way in addressing this with our range of recombinant monoclonal antibodies and knockout edited cell lines for gold-standard validation. Please check that this product meets your needs before purchasing.</p> <p>If you have any questions, special requirements or concerns, please send us an inquiry and/or contact our Support team ahead of purchase. Recommended alternatives for this product can be found below, along with publications, customer reviews and Q&As</p>

製品の特性

製品の状態	Liquid
保存方法	Shipped at 4°C. Store at +4°C short term (1-2 weeks). Upon delivery aliquot. Store at -20°C or -80°C. Avoid freeze / thaw cycle.
バッファー	pH: 7.40 Preservative: 0.02% Sodium azide Constituent: PBS

Batches of this product that have a concentration < 1mg/ml may have BSA added as a stabilising

agent. If you would like information about the formulation of a specific lot, please contact our scientific support team who will be happy to help.

精製度	Immunogen affinity purified
ポリ/モノ	ポリクローナル
アイソタイプ	IgG

アプリケーション

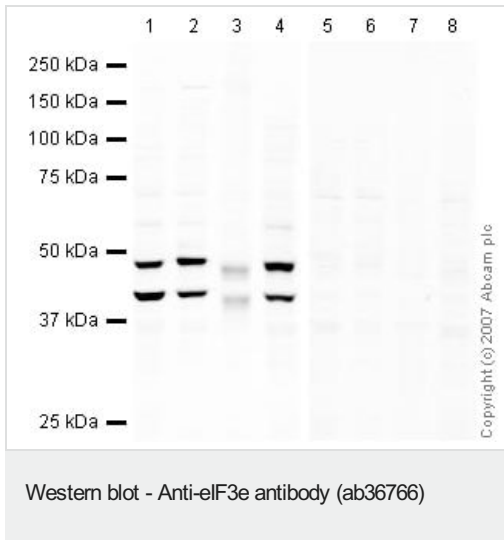
The Abpromise guarantee Abpromise保証は、次のテスト済みアプリケーションにおけるab36766の使用に適用されず
アプリケーションノートには、推奨の開始希釈率がありますが、適切な希釈率につきましてはご検討ください。

アプリケーション	Abreviews	特記事項
IHC-P		Use a concentration of 1 µg/ml. Perform heat mediated antigen retrieval before commencing with IHC staining protocol.
WB	★★★★★ (1)	Use a concentration of 1 µg/ml. Detects a band of approximately 48 kDa (predicted molecular weight: 52 kDa).
ICC/IF		Use a concentration of 1 µg/ml.
IP		Use at an assay dependent concentration.

ターゲット情報

機能	Component of the eukaryotic translation initiation factor 3 (eIF-3) complex, which is required for several steps in the initiation of protein synthesis. The eIF-3 complex associates with the 40S ribosome and facilitates the recruitment of eIF-1, eIF-1A, eIF-2:GTP:methionyl-tRNA _i and eIF-5 to form the 43S preinitiation complex (43S PIC). The eIF-3 complex stimulates mRNA recruitment to the 43S PIC and scanning of the mRNA for AUG recognition. The eIF-3 complex is also required for disassembly and recycling of posttermination ribosomal complexes and subsequently prevents premature joining of the 40S and 60S ribosomal subunits prior to initiation. Required for nonsense-mediated mRNA decay (NMD); may act in conjunction with UPF2 to divert mRNAs from translation to the NMD pathway. May interact with MCM7 and EPAS1 and regulate the proteasome-mediated degradation of these proteins.
組織特異性	Ubiquitously expressed. Expressed at highest levels in appendix, lymph, pancreas, skeletal muscle, spleen and thymus.
配列類似性	Belongs to the eIF-3 subunit E family. Contains 1 PCI domain.
翻訳後修飾	Phosphorylated upon DNA damage, probably by ATM or ATR.
細胞内局在	Cytoplasm. Nucleus > PML body.

画像



All lanes : Anti-eIF3e antibody (ab36766) at 1 µg/ml

Lane 1 : HeLa (Human epithelial carcinoma cell line) Whole Cell Lysate

Lane 2 : Jurkat whole cell lysate ([ab7899](#))

Lane 3 : A-431 whole cell lysate ([ab7909](#))

Lane 4 : HEK-293 whole cell lysate ([ab7902](#))

Lane 5 : HeLa (Human epithelial carcinoma cell line) Whole Cell Lysate with Human eIF3e peptide ([ab36902](#)) at 1 µg/ml

Lane 6 : Jurkat whole cell lysate ([ab7899](#)) with Human eIF3e peptide ([ab36902](#)) at 1 µg/ml

Lane 7 : A-431 whole cell lysate ([ab7909](#)) with Human eIF3e peptide ([ab36902](#)) at 1 µg/ml

Lane 8 : HEK-293 whole cell lysate ([ab7902](#)) with Human eIF3e peptide ([ab36902](#)) at 1 µg/ml

Lysates/proteins at 10 µg per lane.

Secondary

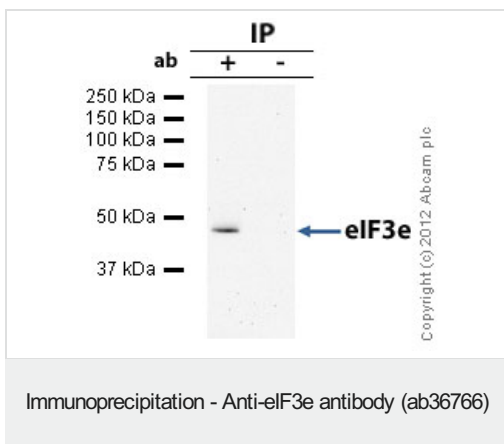
All lanes : IRDye 680 Conjugated Goat Anti-Rabbit IgG (H+L) at 1/10000 dilution

Performed under reducing conditions.

Predicted band size: 52 kDa

Observed band size: 48 kDa

Additional bands at: 40 kDa (possible degradation product)



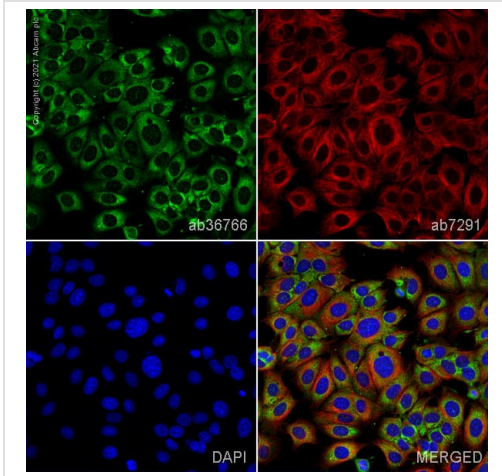
eIF3e was immunoprecipitated using 0.5mg Hela whole cell extract, 5µg of Rabbit polyclonal to eIF3e and 50µl of protein G magnetic beads (+). No antibody was added to the control (-).

The antibody was incubated under agitation with Protein G beads for 10min, Hela whole cell extract lysate diluted in RIPA buffer was added to each sample and incubated for a further 10min under agitation.

Proteins were eluted by addition of 40µl SDS loading buffer and incubated for 10min at 70°C; 10µl of each sample was separated on a SDS PAGE gel, transferred to a nitrocellulose membrane, blocked with 5% BSA and probed with ab36766.

Secondary: Mouse monoclonal [SB62a] Secondary Antibody to Rabbit IgG light chain (HRP) ([ab99697](#)).

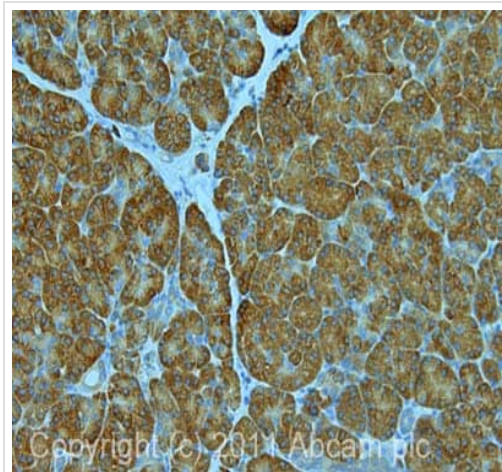
Band: 48kDa: eIF3e.



Immunocytochemistry/ Immunofluorescence - Anti-eIF3e antibody (ab36766)

ab36766 staining eIF3e in MCF7 cells. The cells were fixed with 100% methanol (5 min), permeabilized with 0.1% PBS-Triton X-100 for 5 minutes and then blocked with 1% BSA/10% normal goat serum/0.3M glycine in 0.1% PBS-Tween for 1h. The cells were then incubated overnight at 4°C with ab36766 at 1µg/ml and **ab7291**, Mouse monoclonal [DM1A] to alpha Tubulin - Loading Control. Cells were then incubated with **ab150081**, Goat polyclonal Secondary Antibody to Rabbit IgG - H&L (Alexa Fluor® 488), pre-adsorbed at 1/1000 dilution (shown in green) and **ab150120**, Goat polyclonal Secondary Antibody to Mouse IgG - H&L (Alexa Fluor® 594), pre-adsorbed at 1/1000 dilution (shown in pseudocolour red). Nuclear DNA was labelled with DAPI (shown in blue).

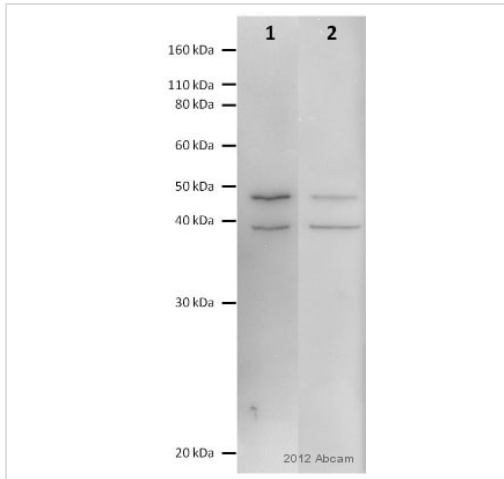
Image was acquired with a confocal microscope (Leica-Microsystems TCS SP8) and a single confocal section is shown.



Immunohistochemistry (Formalin/PFA-fixed paraffin-embedded sections) - Anti-eIF3e antibody (ab36766)

IHC image of ab36766 staining in pancreas formalin fixed paraffin embedded tissue section, performed on a Leica Bond™ system using the standard protocol F. The section was pre-treated using heat mediated antigen retrieval with sodium citrate buffer (pH6, epitope retrieval solution 1) for 20 mins. The section was then incubated with ab36766, 5µg/ml, for 15 mins at room temperature and detected using an HRP conjugated compact polymer system. DAB was used as the chromogen. The section was then counterstained with haematoxylin and mounted with DPX.

For other IHC staining systems (automated and non-automated) customers should optimize variable parameters such as antigen retrieval conditions, primary antibody concentration and antibody incubation times.



Western blot - Anti-eIF3e antibody (ab36766)

This image is courtesy of an anonymous Abreview

All lanes : Anti-eIF3e antibody (ab36766) at 1/1000 dilution

Lane 1 : Chicken tectum lysate

Lane 2 : Zebrafish lysate

Lysates/proteins at 5 µg per lane.

Secondary

All lanes : HRP-conjugated goat anti-rabbit polyclonal IgG at 1/10000 dilution

Predicted band size: 52 kDa

Observed band size: 48 kDa

Additional bands at: 38 kDa (possible degradation product)

Please note: All products are "FOR RESEARCH USE ONLY. NOT FOR USE IN DIAGNOSTIC PROCEDURES"

Our Abpromise to you: Quality guaranteed and expert technical support

- Replacement or refund for products not performing as stated on the datasheet
- Valid for 12 months from date of delivery
- Response to your inquiry within 24 hours
- We provide support in Chinese, English, French, German, Japanese and Spanish
- Extensive multi-media technical resources to help you
- We investigate all quality concerns to ensure our products perform to the highest standards

If the product does not perform as described on this datasheet, we will offer a refund or replacement. For full details of the Abpromise, please visit <https://www.abcam.co.jp/abpromise> or contact our technical team.

Terms and conditions

- Guarantee only valid for products bought direct from Abcam or one of our authorized distributors