


Anti-eIF3A antibody ab86146

★★★★★ [2 Abreviews](#) [8 References](#) [画像数 5](#)

製品の概要

製品名	Anti-eIF3A antibody
製品の詳細	Rabbit polyclonal to eIF3A
由来種	Rabbit
アプリケーション	適用あり: WB, IP, IHC-P
種交差性	交差種: Mouse, Human 交差が予測される動物種: Rat, Rabbit, Guinea pig, Chimpanzee, Rhesus monkey, Gorilla, Orangutan 
免疫原	A region between residue 860 and 910 of human eIF3A using the numbering given in entry NP_003741.1.
ポジティブ・コントロール	HeLa whole cell lysate (ab150035) 293T whole cell lysate NIH3T3 whole cell lysate
特記事項	<p>The Life Science industry has been in the grips of a reproducibility crisis for a number of years. Abcam is leading the way in addressing this with our range of recombinant monoclonal antibodies and knockout edited cell lines for gold-standard validation. Please check that this product meets your needs before purchasing.</p> <p>If you have any questions, special requirements or concerns, please send us an inquiry and/or contact our Support team ahead of purchase. Recommended alternatives for this product can be found below, along with publications, customer reviews and Q&As</p>

製品の特性

製品の状態	Liquid
保存方法	Shipped at 4°C. Store at +4°C short term (1-2 weeks). Upon delivery aliquot. Store at -20°C. Avoid freeze / thaw cycle.
バッファー	pH: 6.8 Preservative: 0.09% Sodium azide Constituents: 0.1% BSA, Tris buffered saline
精製度	Immunogen affinity purified
ポリ/モノ	ポリクローナル
アイソタイプ	IgG

アプリケーション

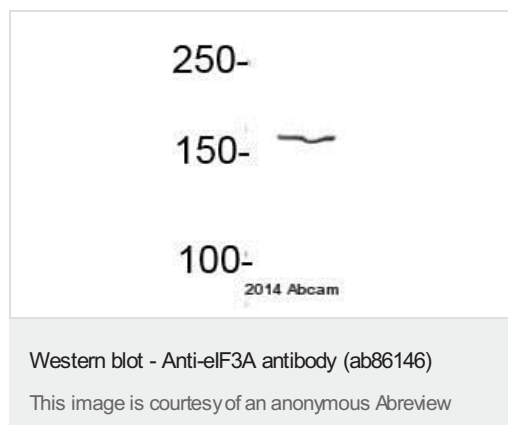
The Abpromise guarantee Abpromise保証は、次のテスト済みアプリケーションにおけるab86146の使用に適用されます
アプリケーションノートには、推奨の開始希釈率がありますが、適切な希釈率につきましてはご検討ください。

アプリケーション	Abreviews	特記事項
WB	★★★★★ (2)	1/2000 - 1/10000. Predicted molecular weight: 167 kDa.
IP		Use at 2-5 µg/mg of lysate.
IHC-P		1/100 - 1/500. Perform heat mediated antigen retrieval before commencing with IHC staining protocol.

ターゲット情報

機能	Component of the eukaryotic translation initiation factor 3 (eIF-3) complex, which is required for several steps in the initiation of protein synthesis. The eIF-3 complex associates with the 40S ribosome and facilitates the recruitment of eIF-1, eIF-1A, eIF-2:GTP:methionyl-tRNAi and eIF-5 to form the 43S pre-initiation complex (43S PIC). The eIF-3 complex stimulates mRNA recruitment to the 43S PIC and scanning of the mRNA for AUG recognition. The eIF-3 complex is also required for disassembly and recycling of post-termination ribosomal complexes and subsequently prevents premature joining of the 40S and 60S ribosomal subunits prior to initiation. Essential for the initiation of translation on type-1 viral ribosomal entry sites (IRESs), like for HCV, PV, EV71 or BEV translation (PubMed:23766293, PubMed:24357634). In case of FCV infection, plays a role in the ribosomal termination-reinitiation event leading to the translation of VP2 (PubMed:18056426).
配列類似性	Belongs to the eIF-3 subunit A family. Contains 1 PCI domain.
翻訳後修飾	Phosphorylated. Phosphorylation is enhanced upon serum stimulation.
細胞内局在	Cytoplasm.

画像



Anti-eIF3A antibody (ab86146) at 1/1000 dilution + Mouse pancreatic cancer whole cell lysate at 20 µg

Secondary

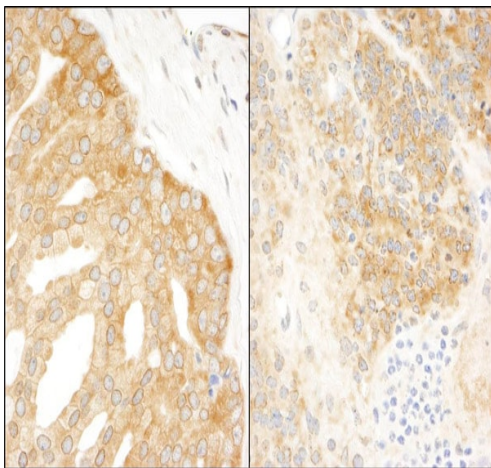
IRDye® 680LT-conjugated donkey anti-mouse IgG polyclonal at 1/15000 dilution

Performed under reducing conditions.

Predicted band size: 167 kDa

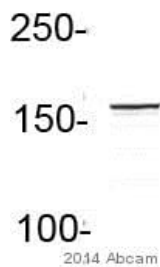
Observed band size: 166 kDa

Exposure time: 10 minutes



Immunohistochemistry (Formalin/PFA-fixed paraffin-embedded sections) - Anti-eIF3A antibody (ab86146)

Immunohistochemistry (Formalin/PFA-fixed paraffin-embedded sections) analysis of human prostate carcinoma (left) and mouse teratoma (right) tissues labelling eIF3A with ab86146 at 1/200 (1µg/ml). Detection: DAB.



Western blot - Anti-eIF3A antibody (ab86146)
This image is courtesy of an anonymous Abreview

Anti-eIF3A antibody (ab86146) at 1/1000 dilution + Human U2OS osteosarcoma whole cell lysate at 20 µg

Secondary

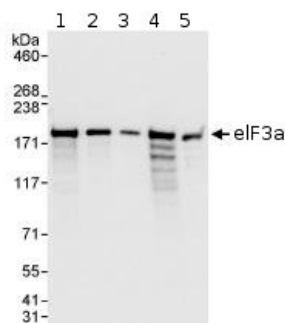
IRDye® 800CW conjugated donkey anti-rabbit polyclonal at 1/15000 dilution

Performed under reducing conditions.

Predicted band size: 167 kDa

Observed band size: 166 kDa

Exposure time: 5 minutes



Western blot - Anti-eIF3A antibody (ab86146)

All lanes : Anti-eIF3A antibody (ab86146) at 0.04 µg/ml

Lane 1 : HeLa whole cell lysate at 50 µg

Lane 2 : HeLa whole cell lysate at 15 µg

Lane 3 : HeLa whole cell lysate at 5 µg

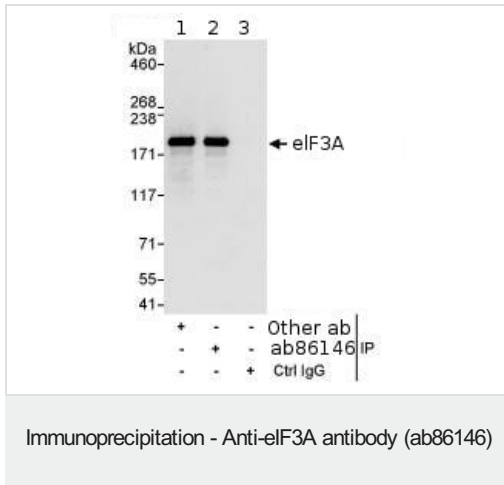
Lane 4 : 293T whole cell lysate at 50 µg

Lane 5 : NIH3T3 whole cell lysate at 50 µg

Developed using the ECL technique.

Predicted band size: 167 kDa

Exposure time: 3 seconds



Detection of Human eIF3A by Immunoprecipitation, using ab86146 at 3µg/mg lysate. Image shows immunoprecipitated eIF3A detected with post IP WB, loading 20% of IP and using HeLa whole cell lysate at 1mg, with an antibody recognising an upstream epitope in lane 1, ab86146 at 1 µg/ml in lane 2 and control IgG in lane 3. Detection: Chemiluminescence with an exposure time of 3 seconds.

Please note: All products are "FOR RESEARCH USE ONLY. NOT FOR USE IN DIAGNOSTIC PROCEDURES"

Our Abpromise to you: Quality guaranteed and expert technical support

- Replacement or refund for products not performing as stated on the datasheet
- Valid for 12 months from date of delivery
- Response to your inquiry within 24 hours
- We provide support in Chinese, English, French, German, Japanese and Spanish
- Extensive multi-media technical resources to help you
- We investigate all quality concerns to ensure our products perform to the highest standards

If the product does not perform as described on this datasheet, we will offer a refund or replacement. For full details of the Abpromise, please visit <https://www.abcam.co.jp/abpromise> or contact our technical team.

Terms and conditions

- Guarantee only valid for products bought direct from Abcam or one of our authorized distributors