

Anti-EIF2B5 (phospho S539) antibody ab4775

8 References [画像数 2](#)

製品の概要

製品名	Anti-EIF2B5 (phospho S539) antibody
製品の詳細	Rabbit polyclonal to EIF2B5 (phospho S539)
由来種	Rabbit
特異性	This ab reacts with both human and rat (see, for example, PMID 21165642, 20484009 and 21832246) but it is not very clear if this recognition happens only when S535 (rat) and S544 (human) are phosphorylated or when S535 (rat)/S540 (human) are phosphorylated.
アプリケーション	適用あり: WB
種交差性	交差種: Mouse, Rat, Recombinant fragment
免疫原	Synthetic peptide corresponding to Rat EIF2B5 (phospho S535). Phosphopeptide derived from the region of rat eIF2Be that contains serine 535 (corresponding to serine 539 in the human sequence).
ポジティブ・コントロール	Recombinant eIF-2B epsilon treated with GSK 3 beta and lambda phosphatase, CHO-T cells transfected with human insulin receptor (IR) +/- insulin. L6, L6 differentiated to myotubes, L6 treated with Insulin (10nM for 10 min), C2C12 and C2C12 treated with Insulin (10nM for 10 min)
特記事項	<p>The Life Science industry has been in the grips of a reproducibility crisis for a number of years. Abcam is leading the way in addressing this with our range of recombinant monoclonal antibodies and knockout edited cell lines for gold-standard validation. Please check that this product meets your needs before purchasing.</p> <p>If you have any questions, special requirements or concerns, please send us an inquiry and/or contact our Support team ahead of purchase. Recommended alternatives for this product can be found below, along with publications, customer reviews and Q&As</p>

製品の特性

製品の状態	Liquid
保存方法	Shipped at 4°C. Upon delivery aliquot and store at -20°C or -80°C. Avoid repeated freeze / thaw cycles.
バッファー	<p>pH: 7.30</p> <p>Preservative: 0.05% Sodium azide</p> <p>Constituents: PBS, 0.1% BSA</p> <p>BSA is IgG and protease free</p>

精製度	Immunogen affinity purified
特記事項 (精製)	Purified from rabbit serum by sequential epitope-specific chromatography. The antibody has been negatively pre-adsorbed using (i) a non-phosphopeptide corresponding to the site of phosphorylation to remove antibody that is reactive with non-phosphorylated eukaryotic initiation factor 2B epsilon (eIF-2B epsilon), and (ii) a generic serine phosphorylated peptide to remove antibody that is reactive with phospho-serine, irrespective of the sequence. The final product is generated by affinity chromatography using an eIF-2B epsilon-derived peptide that is phosphorylated at serine 539.
ポリ/モノ	ポリクローナル
アイソタイプ	IgG

アプリケーション

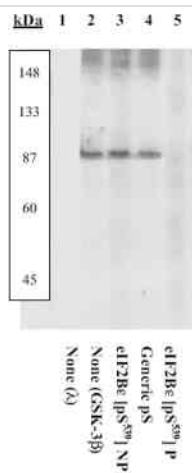
The Abpromise guarantee **Abpromise保証は、次のテスト済みアプリケーションにおけるab4775の使用に適用されます**
 アプリケーションノートには、推奨の開始希釈率がありますが、適切な希釈率につきましてはご検討ください。

アプリケーション	Abreviews	特記事項
WB		1/1000 - 1/2000. Detects a band of approximately 88 kDa (predicted molecular weight: 82 kDa).

ターゲット情報

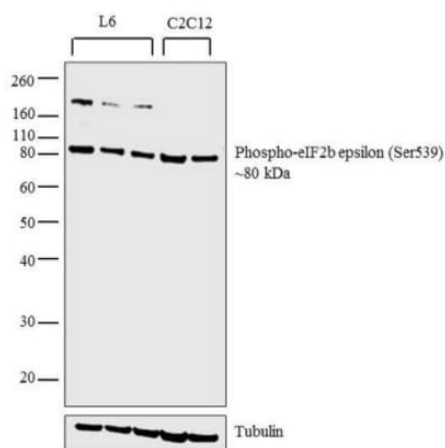
機能	Catalyzes the exchange of eukaryotic initiation factor 2-bound GDP for GTP.
関連疾患	Defects in EIF2B5 are a cause of leukodystrophy with vanishing white matter (VWM) [MIM:603896]. VWM is a leukodystrophy that occurs mainly in children. Neurological signs include progressive cerebellar ataxia, spasticity, inconstant optic atrophy and relatively preserved mental abilities. The disease is chronic-progressive with, in most individuals, additional episodes of rapid deterioration following febrile infections or minor head trauma. While childhood onset is the most common form of the disorder, some severe forms are apparent at birth. A severe, early-onset form seen among the Cree and Chippewyan populations of Quebec and Manitoba is called Cree leukoencephalopathy. Milder forms may not become evident until adolescence or adulthood. Some females with milder forms of the disease who survive to adolescence exhibit ovarian dysfunction. This variant of the disorder is called ovarioleukodystrophy.
配列類似性	Belongs to the eIF-2B gamma/epsilon subunits family. Contains 1 W2 domain.

画像



Western blot - Anti-eIF2B5 (phospho S539) antibody (ab4775)

Peptide Competition: Recombinant eIF-2B epsilon treated with lambda phosphatase (1) or treated with GSK-3 beta (lanes 2-5) and added to background extracts were resolved by SDS-PAGE on a 10% Tris-glycine gel and transferred to PVDF. Membranes were blocked with a 5% BSA-TBST buffer overnight at 4°C, then were incubated with 0.50 µg/mL ab4775 antibody, following prior incubation with: no peptide (1, 2), the nonphosphopeptide corresponding to the immunogen (3), a generic phosphoserine containing peptide (4), or, the phosphopeptide immunogen (5). After washing, membranes were incubated with goat F(ab')₂ anti-rabbit IgG alkaline phosphatase and signals were detected using the Tropix WesternStar method. The data show that only the peptide corresponding to ab4775 blocks the antibody signal, thereby demonstrating the specificity of the antibody. The data also show the up-regulation of the ab4775 phospho signal upon stimulation with GSK-3 beta. Pep



Western blot - Anti-eIF2B5 (phospho S539) antibody (ab4775)

All lanes : Anti-eIF2B5 (phospho S539) antibody (ab4775) at 1/2000 dilution

Lane 1 : L6 whole cell extract

Lane 2 : L6 differentiated to myotubes

Lane 3 : L6 treated with Insulin (10nM for 10 min)

Lane 4 : C2C12

Lane 5 : C2C12 treated with Insulin (10nM for 10 min)

Lysates/proteins at 30 µg per lane.

Secondary

All lanes : Goat anti-Rabbit IgG (H+L) Secondary Antibody, HRP conjugate at 1/4000 dilution

Predicted band size: 82 kDa

A 80 kDa band corresponding to Phospho-eIF2b epsilon was observed across the cell lines tested and reduced upon treatment

and in differentiated cell line.

Please note: All products are "FOR RESEARCH USE ONLY. NOT FOR USE IN DIAGNOSTIC PROCEDURES"

Our Abpromise to you: Quality guaranteed and expert technical support

- Replacement or refund for products not performing as stated on the datasheet
- Valid for 12 months from date of delivery
- Response to your inquiry within 24 hours
- We provide support in Chinese, English, French, German, Japanese and Spanish
- Extensive multi-media technical resources to help you
- We investigate all quality concerns to ensure our products perform to the highest standards

If the product does not perform as described on this datasheet, we will offer a refund or replacement. For full details of the Abpromise, please visit <https://www.abcam.co.jp/abpromise> or contact our technical team.

Terms and conditions

- Guarantee only valid for products bought direct from Abcam or one of our authorized distributors