




### Anti-eIF2B4 antibody ab104941

画像数 1

#### 製品の概要

製品名	Anti-eIF2B4 antibody
製品の詳細	Goat polyclonal to eIF2B4
由来種	Goat
アプリケーション	適用あり: WB
種交差性	交差種: Human 交差が予測される動物種: Mouse, Rat, Rabbit, Cow, Dog 
免疫原	Synthetic peptide: C-RKDYGSKVSLFSH , corresponding to internal sequence amino acids 190-202 of Human eIF2B4 (NP_751945.2; NP_001029288.1; NP_056451.3). <a href="#"> Run BLAST with</a> <a href="#"> Run BLAST with</a>
ポジティブ・コントロール	K562 lysate
特記事項	<p>The Life Science industry has been in the grips of a reproducibility crisis for a number of years. Abcam is leading the way in addressing this with our range of recombinant monoclonal antibodies and knockout edited cell lines for gold-standard validation. Please check that this product meets your needs before purchasing.</p> <p>If you have any questions, special requirements or concerns, please send us an inquiry and/or contact our Support team ahead of purchase. Recommended alternatives for this product can be found below, along with publications, customer reviews and Q&amp;As</p>

#### 製品の特性

製品の状態	Liquid
保存方法	Shipped at 4°C. Upon delivery aliquot and store at -20°C. Avoid repeated freeze / thaw cycles.
バッファー	pH: 7.30 Preservative: 0.02% Sodium azide Constituents: 0.5% BSA, Tris buffered saline
精製度	Immunogen affinity purified
特記事項 (精製)	Purified from goat serum by ammonium sulphate precipitation followed by antigen affinity chromatography using the immunizing peptide.
ポリ/モノ	ポリクローナル

アイソタイプ

IgG

## アプリケーション

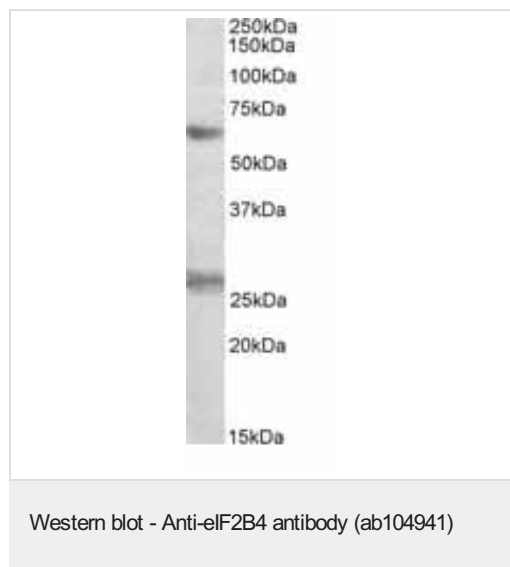
**The Abpromise guarantee** Abpromise保証は、 次のテスト済みアプリケーションにおけるab104941の使用に適用されます  
アプリケーションノートには、推奨の開始希釈率がありますが、適切な希釈率につきましてはご検討ください。

アプリケーション	Abreviews	特記事項
WB		Use a concentration of 0.3 - 1 µg/ml. Detects a band of approximately 60 kDa (predicted molecular weight: 58 kDa). 1 hour primary incubation is recommended for this product.

## ターゲット情報

機能	Catalyzes the exchange of eukaryotic initiation factor 2-bound GDP for GTP.
関連疾患	Leukodystrophy with vanishing white matter
配列類似性	Belongs to the eIF-2B alpha/beta/delta subunits family.

## 画像



Anti-eIF2B4 antibody (ab104941) at 0.3 µg/ml + K562 lysate at 35 µg

Developed using the ECL technique.

**Predicted band size:** 58 kDa

**Observed band size:** 60 kDa

**Exposure time:** 1 hour

An additional band of unknown identity was also consistently observed at 26 kDa. This band was successfully blocked by incubation with the immunizing peptide.

**Please note:** All products are "FOR RESEARCH USE ONLY. NOT FOR USE IN DIAGNOSTIC PROCEDURES"

## Our Abpromise to you: Quality guaranteed and expert technical support

- Replacement or refund for products not performing as stated on the datasheet

- Valid for 12 months from date of delivery
- Response to your inquiry within 24 hours
- We provide support in Chinese, English, French, German, Japanese and Spanish
- Extensive multi-media technical resources to help you
- We investigate all quality concerns to ensure our products perform to the highest standards

If the product does not perform as described on this datasheet, we will offer a refund or replacement. For full details of the Abpromise, please visit <https://www.abcam.co.jp/abpromise> or contact our technical team.

#### **Terms and conditions**

---

- Guarantee only valid for products bought direct from Abcam or one of our authorized distributors