


Anti-EHD1 antibody [EPR4955] ab109747

リコンビナント RabMAb[®]

6 References [画像数 4](#)

製品の概要

製品名	Anti-EHD1 antibody [EPR4955]
製品の詳細	Rabbit monoclonal [EPR4955] to EHD1
由来種	Rabbit
特異性	The immunogen used for this product shares 66% homology with EHD3. Cross-reactivity with this protein has not been confirmed experimentally.
アプリケーション	適用あり: Flow Cyt (Intra), WB, ICC/IF 適用なし: IHC-P
種交差性	交差種: Human 交差が予測される動物種: Mouse, Rat 
免疫原	Synthetic peptide. This information is proprietary to Abcam and/or its suppliers.
ポジティブ・コントロール	HepG2, HeLa and JAR cell lysates; HeLa cells
特記事項	This product is a recombinant monoclonal antibody, which offers several advantages including: <ul style="list-style-type: none">- High batch-to-batch consistency and reproducibility- Improved sensitivity and specificity- Long-term security of supply- Animal-free production For more information see here . Our RabMAb [®] technology is a patented hybridoma-based technology for making rabbit monoclonal antibodies. For details on our patents, please refer to RabMAb[®] patents .

製品の特性

製品の状態	Liquid
保存方法	Shipped at 4°C. Store at -20°C. Stable for 12 months at -20°C.
バッファー	pH: 7.20 Preservative: 0.05% Sodium azide Constituents: 0.1% BSA, 40% Glycerol (glycerin, glycerine), 9.85% Tris glycine, 50% Tissue culture supernatant
精製度	Protein A purified

ポリクローナル モノクローナル
 クローン名 EPR4955
 アイソタイプ IgG

アプリケーション

The Abpromise guarantee **Abpromise保証は、次のテスト済みアプリケーションにおけるab109747の使用に適用されます**
 アプリケーションノートには、推奨の開始希釈率がありますが、適切な希釈率につきましてはご検討ください。

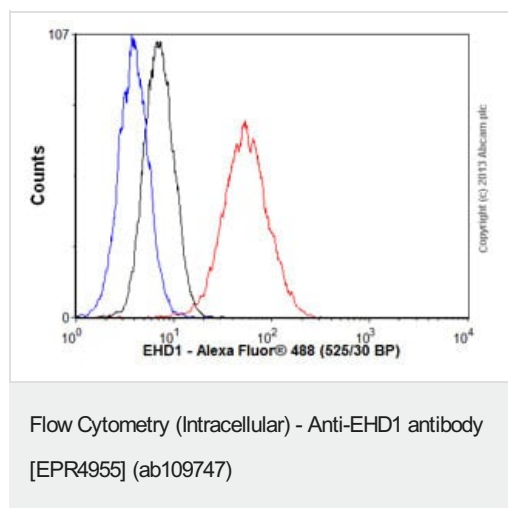
アプリケーション	Abreviews	特記事項
Flow Cyt (Intra)		1/1000 - 1/10000. ab172730 - Rabbit monoclonal IgG, is suitable for use as an isotype control with this antibody.
WB		1/10000 - 1/50000. Predicted molecular weight: 61 kDa.
ICC/IF		1/100 - 1/250.

追加情報 Is unsuitable for IHC-P.

ターゲット情報

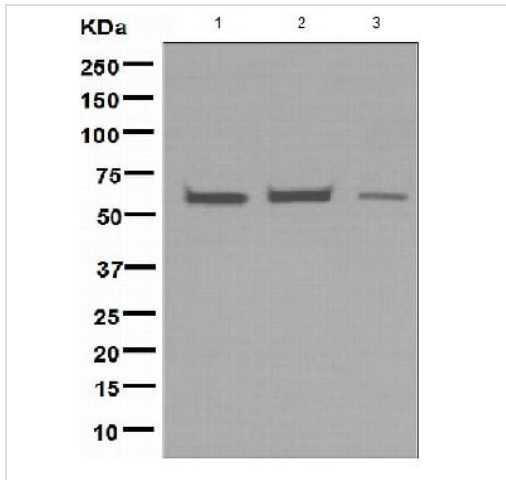
機能 Acts in early endocytic membrane fusion and membrane trafficking of recycling endosomes.
 組織特異性 Highly expressed in testis.
 配列類似性 Contains 1 EF-hand domain.
 Contains 1 EH domain.
 ドメイン The EH domain interacts with Asn-Pro-Phe (NPF) motifs of target proteins.
 細胞内局在 Cell membrane. Early endosome membrane. Recycling endosome membrane. Associated with intracellular tubulovesicular structures.

画像



Overlay histogram showing HeLa cells stained with ab109747 (red line). The cells were fixed with 80% methanol (5 min) and then permeabilized with 0.1% PBS-Tween for 20 min. The cells were then incubated in 1x PBS / 10% normal goat serum / 0.3M glycine to block non-specific protein-protein interactions followed by the antibody (ab109747, 1/10000 dilution) for 30 min at 22°C. The secondary antibody used was Alexa Fluor® 488 goat anti-rabbit IgG (H&L) (**ab150077**) at 1/2000 dilution for 30 min at 22°C. Isotype control antibody (black line) was rabbit IgG (monoclonal) (0.1µg/1x10⁶ cells) used under the same conditions. Unlabelled sample (blue line) was also used as a control. Acquisition of >5,000

events were collected using a 20mW Argon ion laser (488nm) and 525/30 bandpass filter.



Western blot - Anti-EHD1 antibody [EPR4955] (ab109747)

All lanes : Anti-EHD1 antibody [EPR4955] (ab109747) at 1/10000 dilution

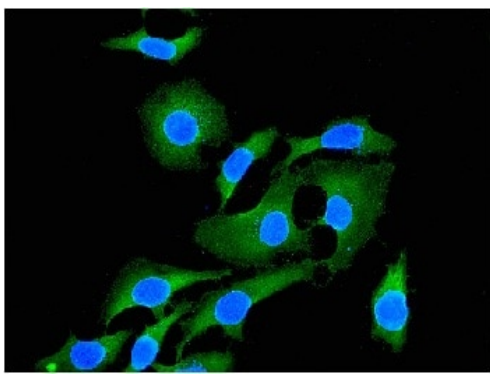
Lane 1 : HepG2 cell lysate

Lane 2 : HeLa cell lysate

Lane 3 : JAR cell lysate

Lysates/proteins at 10 µg per lane.





Predicted band size: 61 kDa



Immunocytochemistry/ Immunofluorescence - Anti-EHD1 antibody [EPR4955] (ab109747)

ab109747, at 1/100 dilution, staining EHD1 in HeLa cells by Immunofluorescence.

Why choose a recombinant antibody?

 <p>Research with confidence Consistent and reproducible results</p>	 <p>Long-term and scalable supply Recombinant technology</p>
 <p>Success from the first experiment Confirmed specificity</p>	 <p>Ethical standards compliant Animal-free production</p>

Anti-EHD1 antibody [EPR4955] (ab109747)

Please note: All products are "FOR RESEARCH USE ONLY. NOT FOR USE IN DIAGNOSTIC PROCEDURES"

Our Abpromise to you: Quality guaranteed and expert technical support

- Replacement or refund for products not performing as stated on the datasheet
- Valid for 12 months from date of delivery
- Response to your inquiry within 24 hours
- We provide support in Chinese, English, French, German, Japanese and Spanish
- Extensive multi-media technical resources to help you
- We investigate all quality concerns to ensure our products perform to the highest standards

If the product does not perform as described on this datasheet, we will offer a refund or replacement. For full details of the Abpromise, please visit <https://www.abcam.co.jp/abpromise> or contact our technical team.

Terms and conditions

- Guarantee only valid for products bought direct from Abcam or one of our authorized distributors