

### Anti-EGFR (phospho Y1086) antibody ab5650

★★★★★ [1 Abreviews](#) [13 References](#) [画像数 3](#)

#### 製品の概要

---

製品名	Anti-EGFR (phospho Y1086) antibody
製品の詳細	Rabbit polyclonal to EGFR (phospho Y1086)
由来種	Rabbit
アプリケーション	<b>適用あり:</b> ICC, WB
種交差性	<b>交差種:</b> Human
免疫原	Synthetic peptide corresponding to Human EGFR (phospho Y1086).
ポジティブ・コントロール	WB: A-431 cells, A549 cells. ICC: A-431 cells.
特記事項	<p>The Life Science industry has been in the grips of a reproducibility crisis for a number of years. Abcam is leading the way in addressing this with our range of recombinant monoclonal antibodies and knockout edited cell lines for gold-standard validation. Please check that this product meets your needs before purchasing.</p> <p>If you have any questions, special requirements or concerns, please send us an inquiry and/or contact our Support team ahead of purchase. Recommended alternatives for this product can be found below, along with publications, customer reviews and Q&amp;As</p>

#### 製品の特性

---

製品の状態	Liquid
保存方法	Shipped at 4°C. Upon delivery aliquot and store at -20°C or -80°C. Avoid repeated freeze / thaw cycles.
バッファー	pH: 7.3 Constituent: PBS
精製度	Immunogen affinity purified
特記事項 (精製)	The antibody has been negatively preadsorbed using (i) a non phosphopeptide corresponding to the site of phosphorylation to remove antibody that is reactive with non-phosphorylated epidermal growth factor receptor (EGFR), and (ii) a generic tyrosine phosphorylated peptide to remove antibody that is reactive with phosphotyrosine, irrespective of the sequence. The final product is generated by affinity chromatography using an EGFR-derived peptide that is phosphorylated at tyrosine 1086.
ポリクローナル	ポリクローナル
アイソタイプ	IgG

## アプリケーション

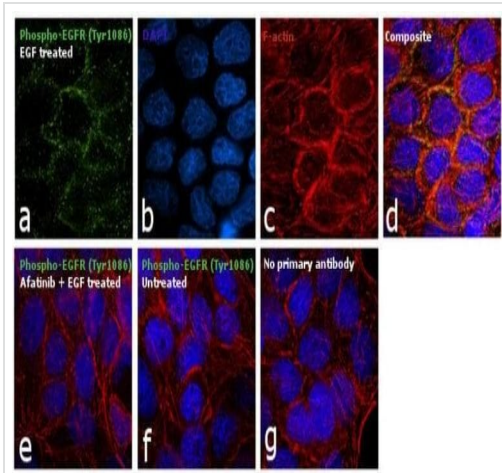
**The Abpromise guarantee** **Abpromise保証は、次のテスト済みアプリケーションにおけるab5650の使用に適用されます**  
アプリケーションノートには、推奨の開始希釈率がありますが、適切な希釈率につきましてはご検討ください。

アプリケーション	Abreviews	特記事項
ICC		1/100.
WB	★★★★★ (1)	Use a concentration of 0.1 - 1 µg/ml. Detects a band of approximately 185 kDa.

## ターゲット情報

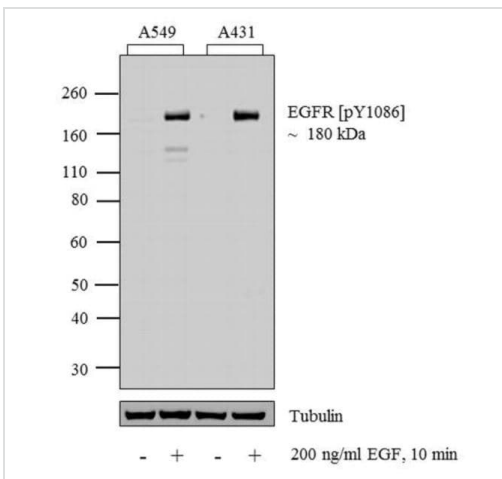
<b>機能</b>	<p>Receptor tyrosine kinase binding ligands of the EGF family and activating several signaling cascades to convert extracellular cues into appropriate cellular responses. Known ligands include EGF, TGFA/TGF-alpha, amphiregulin, epigen/EPGN, BTC/betacellulin, epiregulin/EREG and HBEGF/heparin-binding EGF. Ligand binding triggers receptor homo- and/or heterodimerization and autophosphorylation on key cytoplasmic residues. The phosphorylated receptor recruits adapter proteins like GRB2 which in turn activates complex downstream signaling cascades. Activates at least 4 major downstream signaling cascades including the RAS-RAF-MEK-ERK, PI3 kinase-AKT, PLCgamma-PKC and STATs modules. May also activate the NF-kappa-B signaling cascade. Also directly phosphorylates other proteins like RGS16, activating its GTPase activity and probably coupling the EGF receptor signaling to the G protein-coupled receptor signaling. Also phosphorylates MUC1 and increases its interaction with SRC and CTNNB1/beta-catenin.</p> <p>Isoform 2 may act as an antagonist of EGF action.</p>
<b>組織特異性</b>	Ubiquitously expressed. Isoform 2 is also expressed in ovarian cancers.
<b>関連疾患</b>	Lung cancer Inflammatory skin and bowel disease, neonatal, 2
<b>配列類似性</b>	Belongs to the protein kinase superfamily. Tyr protein kinase family. EGF receptor subfamily. Contains 1 protein kinase domain.
<b>翻訳後修飾</b>	<p>Phosphorylation at Ser-695 is partial and occurs only if Thr-693 is phosphorylated.</p> <p>Phosphorylation at Thr-678 and Thr-693 by PRKD1 inhibits EGF-induced MAPK8/JNK1 activation. Dephosphorylation by PTPRJ prevents endocytosis and stabilizes the receptor at the plasma membrane. Autophosphorylation at Tyr-1197 is stimulated by methylation at Arg-1199 and enhances interaction with PTPN6. Autophosphorylation at Tyr-1092 and/or Tyr-1110 recruits STAT3. Dephosphorylated by PTPN1 and PTPN2.</p> <p>Monoubiquitinated and polyubiquitinated upon EGF stimulation; which does not affect tyrosine kinase activity or signaling capacity but may play a role in lysosomal targeting. Polyubiquitin linkage is mainly through 'Lys-63', but linkage through 'Lys-48', 'Lys-11' and 'Lys-29' also occurs. Deubiquitination by OTUD7B prevents degradation. Ubiquitinated by RNF115 and RNF126.</p> <p>Methylated. Methylation at Arg-1199 by PRMT5 stimulates phosphorylation at Tyr-1197.</p>
<b>細胞内局在</b>	Secreted and Cell membrane. Endoplasmic reticulum membrane. Golgi apparatus membrane. Nucleus membrane. Endosome. Endosome membrane. Nucleus. In response to EGF, translocated from the cell membrane to the nucleus via Golgi and ER. Endocytosed upon activation by ligand. Colocalized with GPER1 in the nucleus of estrogen agonist-induced cancer-

画像



Immunocytochemistry - Anti-EGFR (phospho Y1086) antibody (ab5650)

A-431 cells stained for EGFR (green) using ab5650 at 1/100 dilution in ICC/IF. Followed by Goat anti-Rabbit IgG (H+L) Superclonal™ Secondary Antibody, Alexa Fluor® 488 conjugate at 1/2000 dilution for 45 minutes at room temperature (Panel a). Nuclei (Panel b: blue) were stained with SlowFade® Gold Antifade Mountant with DAPI. F-actin (Panel c: red) was stained with Rhodamine Phalloidin at 1/300 dilution. Panel d represents the merged image showing membranous localization. Panel e represents cells treated with antagonist, Afatinib (1 μM for 6hrs) followed by EGF (200 ng/mL for 10 minutes), showing no signal. Panel f shows untreated cells with no signal. Panel g represents control cells with no primary antibody to assess background.



Western blot - Anti-EGFR (phospho Y1086) antibody (ab5650)

**All lanes** : Anti-EGFR (phospho Y1086) antibody (ab5650) at 1/1000 dilution

**Lane 1** : A549 cell lysate

**Lane 2** : A549 cell lysate treated for 10 minutes with 200 ng/mL of EGF

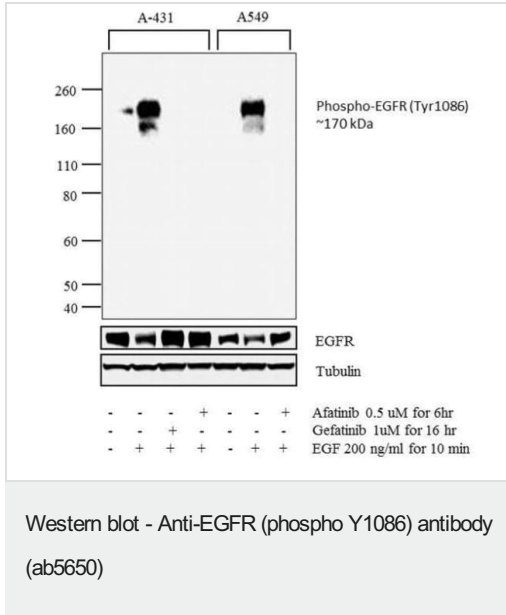
**Lane 3** : A431 cell lysate

**Lane 4** : A431 cell lysate treated for 10 minutes with 200 ng/mL of EGF

Lysates/proteins at 30 μg per lane.

**Secondary**

**All lanes** : Goat Anti-Rabbit IgG - HRP Secondary Antibody at 1/5000 dilution



**All lanes** : Anti-EGFR (phospho Y1086) antibody (ab5650) at 1/1000 dilution

**Lane 1** : A-431 extracts

**Lane 2** : A-431 treated with EGF (200 ng/mL for 10 minutes)

**Lane 3** : A-431 treated with Gefitinib followed by EGF (1 uM for 16 hours, 200 ng/mL for 10 minutes)

**Lane 4** : A-431 treated with Afatinib followed by EGF (0.5 uM for 6 hours, 200 ng/mL for 10 minutes)

**Lane 5** : A549 extracts

**Lane 6** : A549 treated with EGF (200 ng/mL for 10 minutes)

**Lane 7** : A549 treated with Afatinib followed by EGF (0.5 uM for 6 hours, 200 ng/mL for 10 minutes)

Lysates/proteins at 30 µg per lane.

### Secondary

**All lanes** : Goat anti-Rabbit IgG (H+L) Superclonal™ Secondary Antibody, HRP conjugate at 1/4000 dilution

**Please note:** All products are "FOR RESEARCH USE ONLY. NOT FOR USE IN DIAGNOSTIC PROCEDURES"

### Our Abpromise to you: Quality guaranteed and expert technical support

- Replacement or refund for products not performing as stated on the datasheet
- Valid for 12 months from date of delivery
- Response to your inquiry within 24 hours
- We provide support in Chinese, English, French, German, Japanese and Spanish
- Extensive multi-media technical resources to help you
- We investigate all quality concerns to ensure our products perform to the highest standards

If the product does not perform as described on this datasheet, we will offer a refund or replacement. For full details of the Abpromise, please visit <https://www.abcam.co.jp/abpromise> or contact our technical team.

## Terms and conditions

---

- Guarantee only valid for products bought direct from Abcam or one of our authorized distributors